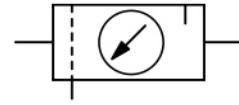


## CD2

## CD2

<b>Description</b>	Solid, low-cost FRL service unit made of zinc die-cast equipped with pressure gauge.
<b>Media</b>	compressed air or non-corrosive gases
<b>Supply pressure</b>	max. 16 bar for metal bowl with sight glass, max. 30 bar for metal bowl without sight glass
<b>Adjustment</b>	by plastic knob with snap-lock up to G $\frac{1}{2}$ by hexagon head screw from G $\frac{3}{8}$ up to G $\frac{1}{2}$ on (CD.-1A.) by T-handle from G $\frac{1}{2}$ (CD.-12.) up to G2 on
<b>Relieving function</b>	relieving, optionally non-relieving
<b>Gauge port</b>	G $\frac{1}{4}$ or G $\frac{3}{8}$ at CD.-01/-02, on both sides of the body, one screw plug supplied
<b>Filter element</b>	20 $\mu$ m or 50 $\mu$ m, optionally 5 $\mu$ m or 50 $\mu$ m, made of propylene <b>Bowl</b> metal version with or without sight glass
<b>Drainage</b>	semiautomatic drain as standard, optionally automatic (max. 16 bar) or manual drain for max. 30 bar
<b>Temperature range</b>	-10 °C to 50 °C / -14 °F to 122 °F metal bowl with sight glass, for G $\frac{3}{8}$ to G $\frac{1}{2}$ -20 °C to 60 °C / -4 °F to 140 °F metal bowl with sight glass, for G $\frac{3}{8}$ to G2 -30 °C to 80 °C / -22 °F to 176 °F metal bowl without sight glass, for all sizes
<b>Material</b>	Body: zinc die-cast at G $\frac{3}{8}$ and G $\frac{1}{4}$ , aluminium at G $\frac{3}{8}$ up to G2 Elastomer: NBR/Buna-N Bowl: zinc die-cast



G $\frac{1}{8}$  up to G2

Dimensions			Combination consisting of	Bowl design made of / with	Filter element	Flow rate		Connection thread G	Order number
A	B	C				m <sup>3</sup> /h*1	l/min*1		

### FRL unit, 2-part

P<sub>1</sub>: max. 16 bar, P<sub>2</sub>: 0.8...8 bar, 20 / 50  $\mu$ m, semiautomatic drain, relieving, with gauge

CD2

80	201	128	BD+LD	metal/sight glass	20	27	450	G $\frac{1}{8}$ G $\frac{1}{4}$	CD2-01 CD2-02
128	248	148		metal/sight glass	50	108	1 800	G $\frac{3}{8}$ G $\frac{1}{2}$	CD2-03 CD2-04
275	314	179		metal/sight glass	50	300	5 000	G $\frac{3}{4}$ G1	CD2-06 CD2-08
386	314	179		metal/sight glass	50	300	5 000	G $\frac{1}{4}$ G $\frac{1}{2}$	CD2-10 CD2-1A
355	483	223		metal/sight glass	50	960	16 000	G $\frac{1}{2}$ G2	CD2-12 CD2-16



CD2-01/-02



CD2-03/-04



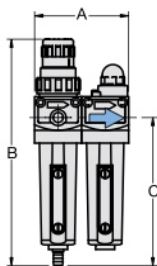
CD2-10/-1A

### Special options, add the appropriate letter

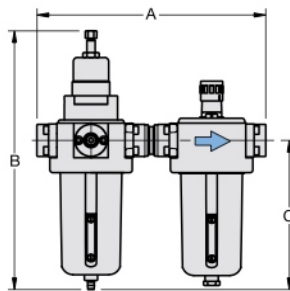
5 $\mu$ m filter element		for G $\frac{1}{8}$ up to G $\frac{1}{2}$	CD2-...G
		for G $\frac{3}{8}$ up to G1	CD2-...G
		for G $\frac{1}{4}$ up to G2	CD2-...G
0.3...3 bar regulation range			CD2-...B
1 ...15 bar			CD2-...E
operating press. 30 bar	only for metal bowl (without sight glass) with manual drain		CD2-...NH
manual drain	max. 16 bar		CD2-...H
automatic drain	drainage by float valve, max. 16 bar	for G $\frac{3}{8}$ up to G2	CD2-...R

### Accessories, enclosed

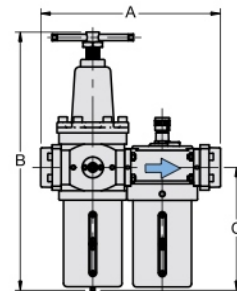
mounting bracket	made of steel	for G $\frac{1}{8}$ and G $\frac{1}{4}$	BW30-02
mounting nut	made of plastic	for G $\frac{1}{8}$ and G $\frac{1}{4}$	M30x1,5K
mounting bracket	made of steel	for G $\frac{3}{8}$ and G $\frac{1}{2}$	BW50-03
mounting nut	made of plastic	for G $\frac{3}{8}$ and G $\frac{1}{2}$	M50x1,5K
mounting bracket	made of stainless steel	for G $\frac{3}{4}$ up to G $\frac{1}{2}$ (1A)	BW00-59S
set of brackets	made of steel	for G $\frac{1}{2}$ (12) and G2	BW00-61



CD2-01/-.../-04



CD2-06/-08/-10/-1A



CD2-12/-16

\*1 at 8 bar supply pressure, 6 bar outlet pressure and 1 bar pressure drop