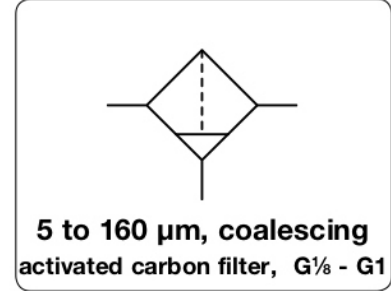


F035 - F095 - Filtre de séparation, miniature à cartouche ou coalescent pour air comprimé

| | | | |
|------------------------------|---|--|---|
| Description | Filter of modular design which can be interlocked with all other instruments of the same series without need for double nipples. The flow on standard filters is from outside to inside; on coalescing filters 0.1 µm from inside to outside. | | |
| Filter element | 5 µm, 20 µm, 80 µm made of sintered polyethylene, 160 µm made of stainless steel, 0.01 µm coalescing filter made of borosilicate and activated carbon filter | | |
| Filtration efficiency | coalescing filter: 99.99% at 0.01 µm particle size, | | residual oil content < 5 mg/m ³ |
| Bowl | plastic version with bayonet catch, | | type 042 with connection thread |
| Drainage | manual drain in conjunction with semiautomatic drain, optionally automatic drain, no drain for water | | |
| Operating pressure | max. 7 bar at series 035, max. 16 bar at series 042, max. 12.5 bar at series 050 to 095 | | |
| Temperature range | 0 °C to 50 °C / 32 °F to 122 °F | | |
| Material | Body: nylon, POM at types 035 and 042 Bowl: polyamide | | Elastomer: NBR/Buna-N Inner valve: brass |



| Dimensions | | | Bowl | Flow | P ₁ | Filter | Connection | Order |
|------------|----|----|--------|----------|---------------------|---------|------------|--------|
| A | B | C | Design | Capacity | rate | element | thread | number |
| mm | mm | mm | | l | m ³ /h*1 | µm | G | |

| Compressed air filter | | | | manual drain with semiautomatic drain, 99.99% at 0.01 µm | | | | | F0 | |
|-----------------------|-----|---------|---------------------|---|------|------|------------------|------------------|-------------------------------|-----------------|
| 38 | 79 | 67 | plastic | 0.008 | 45 | 750 | 7 | 20 | G ¹ / ₈ | F035-01H |
| | | | plastic | | 40 | 670 | | 5 | | F035-01G |
| | | | for water w/o drain | | 50 | 830 | | 80 | | F035-01J |
| | | | coalescing | | 7 | 115 | | 0.01 | | F035-01C |
| 42 | 146 | 126 | plastic | 0.02 | 75 | 1250 | 16 | 20 | G ¹ / ₄ | F042-02H |
| | | | plastic | | 63 | 1050 | | 5 | | F042-02G |
| | | | for water w/o drain | | 79 | 1320 | | 80 | | F042-02J |
| | | | for water w/o drain | | 87 | 1450 | | 160 | | F042-02K |
| | | | coalescing | | 11 | 180 | | 0.01 | | F042-02C |
| | | plastic | | 87 | 1450 | | activated carbon | | F042-02A | |
| 52 | 174 | 148 | bowl guard | 0.04 | 150 | 2500 | 12.5 | 20 | G ³ / ₈ | F050-03H |
| | | | | | 126 | 2100 | | 5 | | F050-03G |
| | | | | | 16 | 500 | | 0.01 | | F050-03C |
| | | | | | 150 | 2500 | | activated carbon | | F050-03A |



F035

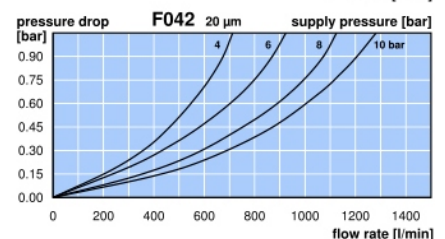
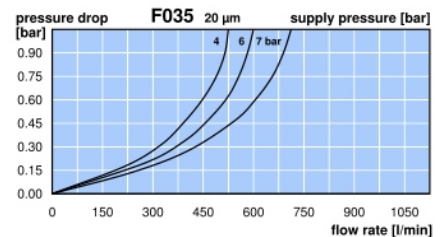
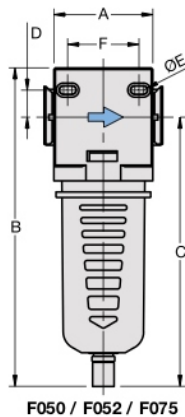
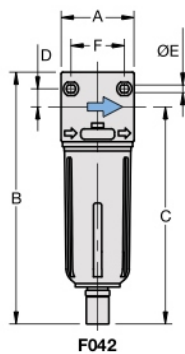
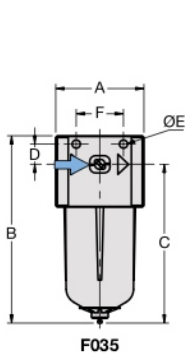
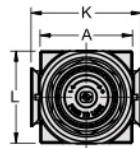


miniature filter regulator combination



F050

| Series | D | Ø E | F | K | L |
|--------|------|-----|----|----|----|
| F035 | 8.5 | 3.5 | 20 | - | 36 |
| F042 | 10.5 | 4.5 | 31 | - | 42 |
| F050 | 16.0 | 5.5 | 41 | 63 | 52 |



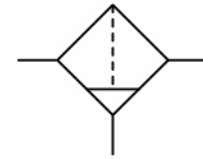
*1 at 10 bar operating pressure and 1 bar pressure drop, for F035 and filter element 00.1 µm only 7 bar operating pressure



F035 - F095

F035 - F095

| | | |
|------------------------------|---|---|
| Description | Filter of modular design which can be interlocked with all other instruments of the same series without need for double nipples. The flow on standard filters is from outside to inside; on coalescing filters 0.1 µm from inside to outside. | |
| Filter element | 5 µm, 20 µm, 80 µm made of sintered polyethylene, 160 µm made of stainless steel, 0.01 µm coalescing filter made of borosilicate and activated carbon filter | |
| Filtration efficiency | coalescing filter: 99.99% at 0.01 µm particle size, | residual oil content < 5 mg/m³ |
| Bowl | plastic version with bayonet catch, | type 042 with connection thread |
| Drainage | manual drain in conjunction with semiautomatic drain, optionally automatic drain, no drain for water | |
| Operating pressure | max. 7 bar at series 035, max. 16 bar at series 042, max. 12.5 bar at series 050 to 095 | |
| Temperature range | 0 °C to 50 °C / 32 °F to 122 °F | |
| Material | Body: nylon, POM at types 035 and 042 Bowl: polyamide | Elastomer: NBR/Buna-N Inner valve: brass |



5 to 160 µm, coalescing activated carbon filter, G $\frac{1}{2}$ - G1

| Dimensions | | | Bowl | Flow | P ₁ | Filter | Connection | Order |
|------------|----|----|--------|----------|----------------|---------|------------|--------|
| A | B | C | Design | Capacity | rate | element | thread | number |
| mm | mm | mm | | l | m³/h*1 | l/min*1 | bar | µm |

| Compressed air filter | | | | | | | | | | F0 |
|-----------------------|-----|-----|------------|------|-----|-------|------|------------------|-----------------|--|
| | | | | | | | | | | manual drain with semiautomatic drain, 99.99% at 0.01 µm |
| 52 | 174 | 148 | bowl guard | 0.04 | 156 | 2600 | 12.5 | 20 | G $\frac{1}{2}$ | F052-04H |
| | | | | | 132 | 2200 | | 5 | | F052-04G |
| | | | | | 17 | 500 | | 0.01 | | F052-04C |
| | | | | | 156 | 2600 | | activated carbon | | F052-04A |
| 63 | 204 | 173 | bowl guard | 0.10 | 186 | 3100 | 12.5 | 20 | G $\frac{1}{2}$ | F075-04H |
| | | | | | 165 | 2750 | | 5 | | F075-04G |
| | | | | | 18 | 800 | | 0.01 | | F075-04C |
| | | | | | 186 | 3100 | | activated carbon | | F075-04A |
| 137 | 204 | 173 | bowl guard | 0.10 | 192 | 3200 | 12.5 | 20 | G $\frac{3}{4}$ | F080-06H |
| | | | | | 168 | 2800 | | 5 | | F080-06G |
| | | | | | 18 | 800 | | 0.01 | | F080-06C |
| 95 | 284 | 237 | bowl guard | 0.20 | 828 | 13800 | 12.5 | 20 | G1 | F095-08H |
| | | | | | 750 | 12500 | | 5 | | F095-08G |



F052



F080



F095

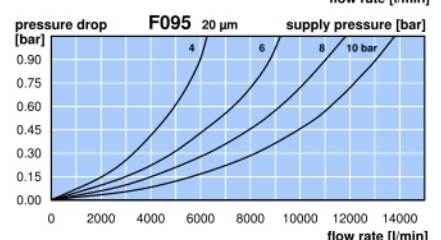
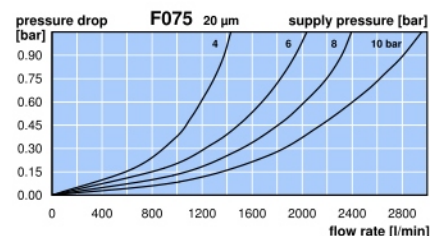
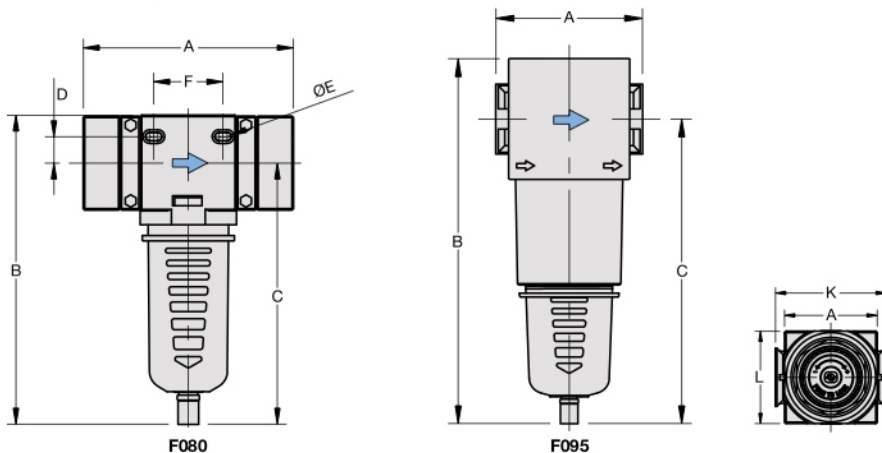
Special options, add the appropriate letter

automatic drain C400200130 for F042 to F095 F0 . -.0 . . R

Accessories, enclosed

mounting bracket set made of steel for F095 BW00-02

| Series | D | Ø E | F | K | L |
|--------|------|-----|----|-----|----|
| F052 | 16.0 | 5.5 | 41 | 63 | 52 |
| F075 | 17.5 | 5.5 | 45 | 75 | 63 |
| F080 | 17.5 | 5.5 | 45 | - | 63 |
| F095 | - | - | - | 115 | 95 |



*1 at 10 bar operating pressure and 1 bar pressure drop, for F035 and filter element 00.1 µm only 7 bar operating pressure