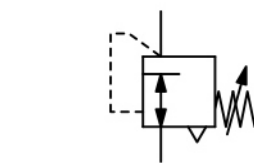


DB400 - Déverseur limiteur de pression de forte capacité

| | |
|--------------------------|--|
| Description | Diaphragm back pressure regulators protect pneumatic devices against overpressure. If the pressure exceeds the setpoint, the pressure valve exhausts to the atmosphere until the pressure level is below the setpoint. It is advisable to select the pressure range as near as possible to the maximum setpoint. |
| Media | compressed air or non-corrosive gases |
| Overpressure | max. 17 bar |
| Adjustment | by handwheel with locknut |
| Gauge port | G $\frac{1}{4}$ on both sides of the body, screw plugs supplied |
| Mounting position | any |
| Temperature range | 0 °C to 90 °C / 32 °F to 194 °F , for appropriately conditioned compressed air down to -40 °C / -40 °F |
| Material | Body: aluminium die-cast Elastomer: NBR/Buna-N, optionally FKM Inner valve: stainless steel, brass, aluminium and cadmium-plated steel |



**G $\frac{3}{8}$ up to G $\frac{3}{4}$, 4200 l/min
0.03 ... 0.7/10 bar**

| Dimensions | | | Relief capacity l/min*1 | Over-pressure max. bar | Connection thread G | Adjustement range bar | Order number |
|------------|---|---|----------------------------|---------------------------|---------------------------|-----------------------------|-----------------|
| A | B | C | | | | | |

| Precision back pressure regulator | | | | overpressure max. 17 bar | | DB400 | |
|-----------------------------------|-----|----|------|--------------------------|-----------------|--------------|-----------|
| 89 | 206 | 39 | 3800 | 17 | G $\frac{3}{8}$ | 0.03 ... 0.7 | DB400-031 |
| | | | | | | 0.03 ... 2.0 | DB400-03A |
| | | | | | | 0.07 ... 4.0 | DB400-03B |
| | | | | | | 0.15 ... 10 | DB400-03C |
| 89 | 206 | 39 | 4000 | 17 | G $\frac{1}{2}$ | 0.03 ... 0.7 | DB400-041 |
| | | | | | | 0.03 ... 2.0 | DB400-04A |
| | | | | | | 0.07 ... 4.0 | DB400-04B |
| | | | | | | 0.15 ... 10 | DB400-04C |
| 89 | 206 | 39 | 4200 | 17 | G $\frac{3}{4}$ | 0.03 ... 0.7 | DB400-061 |
| | | | | | | 0.03 ... 2.0 | DB400-06A |
| | | | | | | 0.07 ... 4.0 | DB400-06B |
| | | | | | | 0.15 ... 10 | DB400-06C |



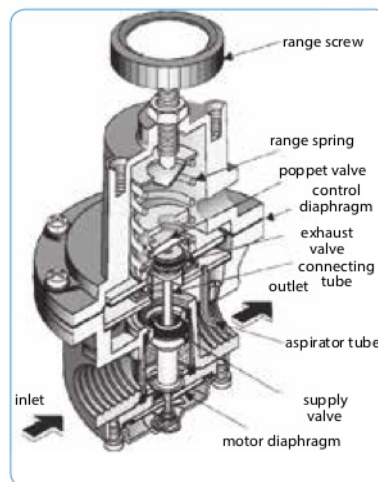
DB400

Special options, add the appropriate letter

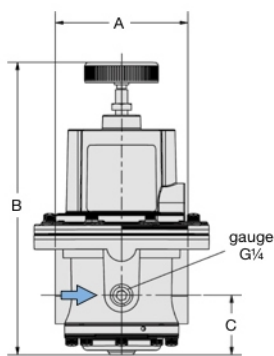
| | | |
|-------------------------|---|------------|
| NPT | connection thread | DB400-0..N |
| tamper-proof cap | aluminium, adjustment by screwdriver, total height 295 mm | DB400-0..T |
| FKM elastomer | | DB400-0..V |

Accessories, enclosed

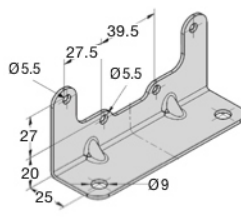
| | | |
|-------------------------|--------------------------------------|-------------|
| pressure gauge | Ø 63 mm, 0...*2 bar, G $\frac{1}{4}$ | MA6302-..*2 |
| mounting bracket | made of steel | BW00-47 |



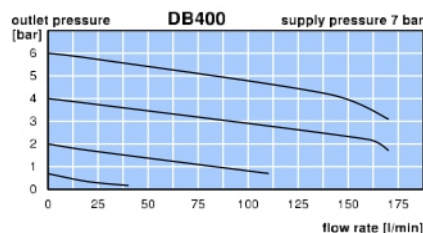
cross-section



DB400



BW00-47



*1 at 7 bar inlet pressure and 1.4 bar outlet pressure

*2 01 = 0...1 bar, 02 = 0...2.5 bar, 04 = 0...4 bar, 10 = 0...10 bar, 25 = 0...25 bar