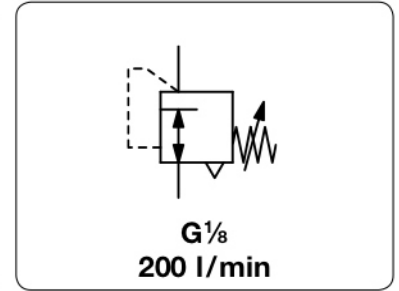


RI - Détendeur de pression, de très petites dimensions et de faible consommation

Description	Diaphragm precision pressure regulator of very small design and low air consumption
Media	compressed air or non-corrosive gases
Supply pressure	max. 10 bar
Accuracy	response sensitivity: $\pm 0,2$ % FS reproducibility: $\pm 0,5$ % FS
Air consumption	max. 5 l/min at 10 bar supply pressure. Consumption depends on supply pressure.
Adjustment	by handwheel with locknut
Relieving function	relieving
Gauge port	G $\frac{1}{8}$ on both sides of the body, screw plug supplied
Mounting position	any
Temperature range	0 °C to 60 °C / 32 °F to 140 °F
Material	Body: zinc die-cast Elastomer: NBR/Buna-N Inner valve: stainless steel and brass



Dimensions			Flow rate l/min*1	Supply pressure max. bar	Connection thread G	Pressure range bar	Order number
A	B	C					

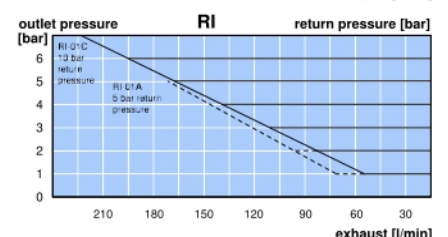
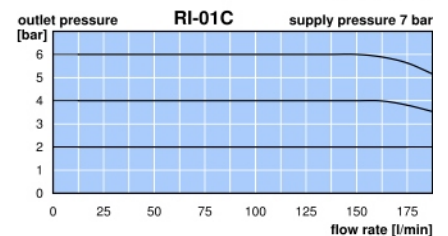
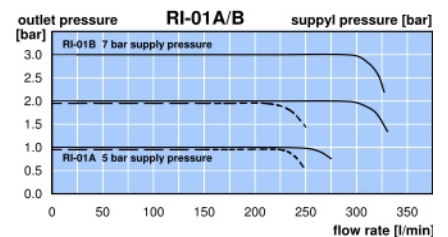
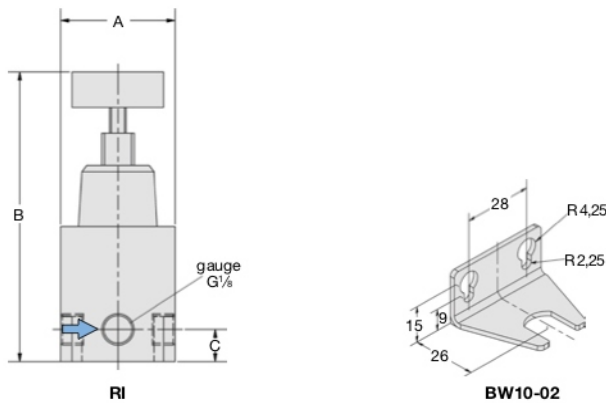
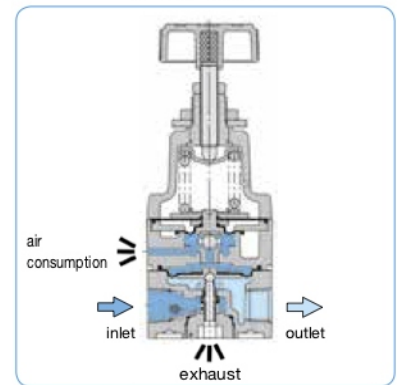
Precision pressure regulator			supply pressure max. 10 bar, relieving, with constant bleed, with mounting nut			RI
35	90	10	200	10	G $\frac{1}{8}$	0.05...2 RI-01A
						0.05...4 RI-01B
						0.05...8 RI-01C



RI-01, with mounting nut
accessory: gauge

Accessories, enclosed

pressure gauge	\varnothing 23 mm, 0...*2 bar, G $\frac{1}{8}$	MA2301-...*2
mounting bracket	made of steel, mounting nut at the device	BW10-02



*1 for compressed air: 7 bar supply pressure, 6 bar outlet pressure and 1 bar pressure drop
*2 04 = 0...4 bar, 10 = 0...10 bar