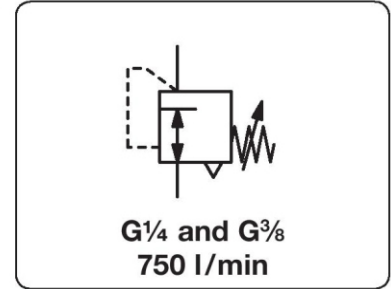


R216 - Régulateur Basse Pression, sans consommation, 10 à 3500 mbar, G1/4" et G3/8"

R 216 - Low Pressure Regulator, without media consumption, 10 to 3500 mbar.

Description	Diaphragm pressure regulator with good regulation accuracy at varying volume flow, especially at low pressure.		
Media	compressed air or non-corrosive gases		
Supply pressure	max. 21 bar		
Accuracy	response sensitivity: < 100 mbar		
Air consumption	without constant bleed		
Adjustment	by T-handle with locknut, mounting bracket not possible		
Relieving function	by handwheel, suitable for panel mounting		
Gauge port	relieving, optionally non-relieving		
Mounting position	G $\frac{3}{8}$ on the bottom side of the body, one screw plug supplied		
Temperature range	any		
	0 °C to 50 °C / 32 °F to 122 °F for handwheel version		
	0 °C to 80 °C / 32 °F to 176 °F for T-handle version		
	for appropriately conditioned compressed air down to -30 °C / -22 °F		
Material	Body: zinc die-cast	Elastomer: NBR/Buna-N	Bottom screw: brass



Dimensions			Adjustment	K-value	Flow rate		Connection thread	Pressure range	Order number
A	B	C			m ³ /h*1	l/min*1			
mm	mm	mm	by	(m ³ /h)			G	bar	

Precision pressure regulator			supply pressure max. 21 bar, relieving, without constant bleed				R216		
108	162	32	T-handle	0.39	42	700	G $\frac{1}{4}$	0.01 ... 0.6	R216-02E
								0.01 ... 1.6	R216-02F
								0.01 ... 3.5	R216-02H
			handwheel for panel mounting	0.42	45	750	G $\frac{3}{8}$	0.01 ... 0.6	R216-03E
								0.01 ... 1.6	R216-03F
								0.01 ... 3.5	R216-03H
108	162	32	handwheel for panel mounting	0.39	42	700	G $\frac{1}{4}$	0.01 ... 0.6	R216-02EP
								0.01 ... 1.6	R216-02FP
								0.01 ... 3.5	R216-02HP
			handwheel for panel mounting	0.42	45	750	G $\frac{3}{8}$	0.01 ... 0.6	R216-03EP
								0.01 ... 1.6	R216-03FP
								0.01 ... 3.5	R216-03HP



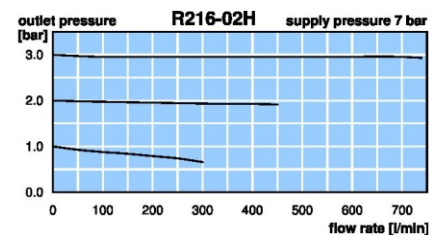
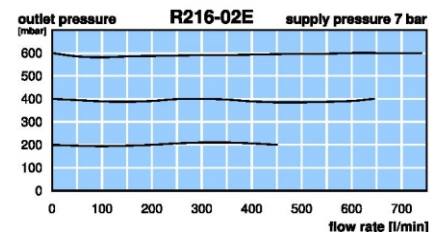
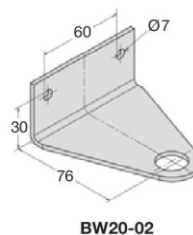
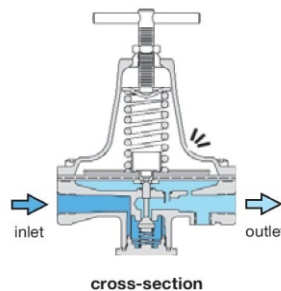
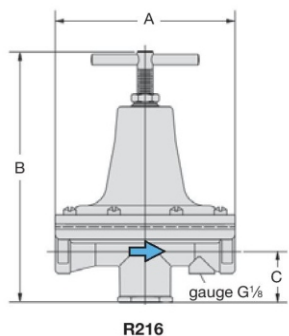
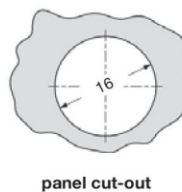
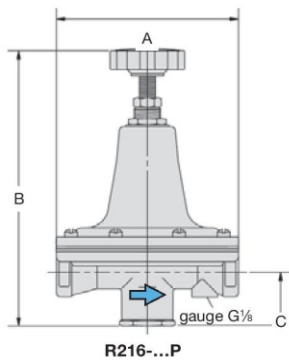
R216-02F

Special options, add the appropriate letter		
non-relieving	without relieving function	R216-0...K
NPT	connection thread	R216-0...N
free of oil and grease	specially cleaned	R216-0...L

Accessories		
pressure gauge	Ø 63 mm, 0... ² bar, G $\frac{1}{4}$, connection parts required	MA6302-... ²
connection parts	for pressure gauge	AM-02
mounting bracket	made of steel, mounting nut at the device for R216-0...P	BW20-02



R216-03FP
for panel mounting



*1 at 7 bar supply pressure and 3 bar outlet pressure

*2 01 = 0...1 bar, 02 = 0...2,5 bar, 04 = 0...4 bar