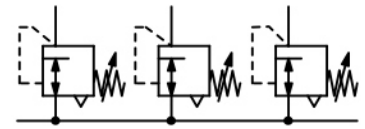


RB - Assemblage de régulateurs de pression en batterie

Description	Diaphragm pressure regulator, with joint pressure supply. Modular assembly without need for double nipples or other fittings. Outlet at rear side, gauge port in the front.		
Media	compressed air or non-corrosive gases		
Supply pressure	max. 16 bar, max. 10 bar for R035		
Air consumption	without constant bleed		
Adjustment	by plastic knob with snap-lock, R035 without snap-lock		
Relieving function	relieving, optionally non-relieving		
Gauge port	G $\frac{1}{8}$ at R035 and RB-02, G $\frac{1}{4}$ at all others		
Mounting position	any		
Temperature range	0 °C to 50 °C / 32 °F to 122 °F		
Material	Body: zinc die-cast, POM at R035	Adjusting knob: plastic	Inner valve: brass
	Elastomer: NBR/Buna-N		
	Thread insert: brass at R035		



G $\frac{1}{8}$ up to G $\frac{1}{2}$
joint supply

Dimensions			K _v - splitting value	Flow rate	Connection thread	Pressure range	Order number
A	B	C					

Pressure regulator			supply pressure max. 16 bar, relieving Series R035 max. 10 bar, without pressure gauge				RB / R035			
36	61	12	36	0.11	15	250	G $\frac{1}{8}$	0 ... 6	R035-01RB	
40	84	12	40	0.60	60	1000	G $\frac{1}{4}$	0.1... 3 0.2... 6 0.5...10	RB-02B RB-02C RB-02D	
48	94	22	45	1.3	126	2100	G $\frac{1}{4}$	0.1... 3 0.2... 6 0.5...10 0.5...16	RB-A2B RB-A2C RB-A2D RB-A2E	
58	114	27	55	1.9	192	3200	G $\frac{3}{8}$	0.1... 3 0.2... 6 0.5...10 0.5...16	RB-03B RB-03C RB-03D RB-03E	
70	133	36	66	2.4	240	4000	G $\frac{1}{2}$	0.1... 3 0.2... 6 0.5...10 0.5...16	RB-04B RB-04C RB-04D RB-04E	



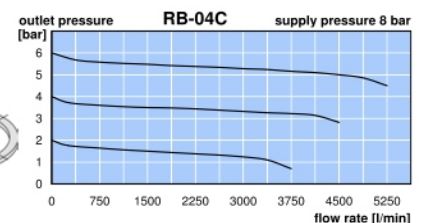
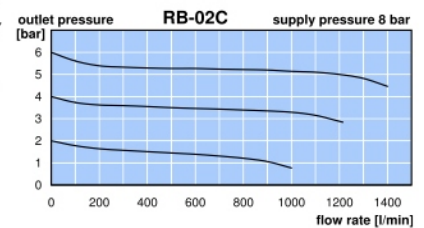
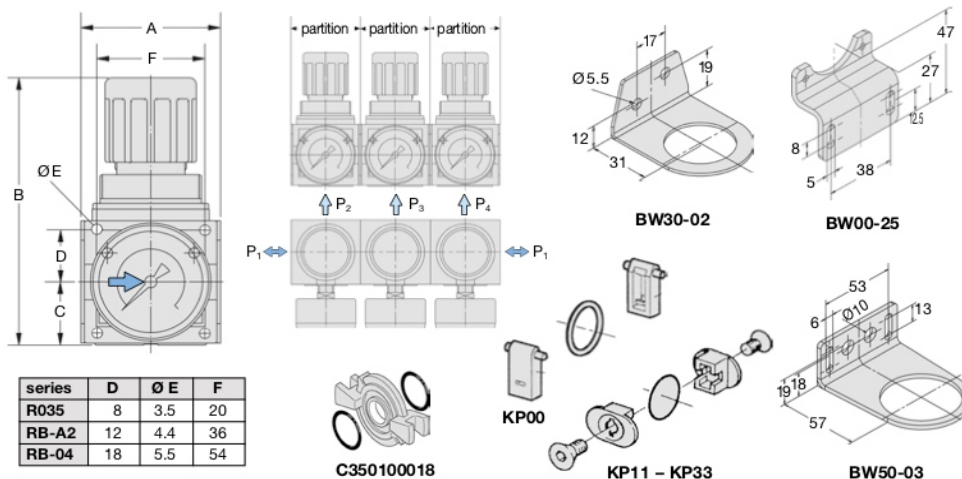
battery block R035
accessory: gauge



battery block RB
accessory: gauge

Accessories, enclosed

pressure gauge	Ø 23 mm, 0... ^{*2} bar, G $\frac{1}{8}$	for RB-02 / R035	MA2301...^{*2}
	Ø 40 mm, 0... ^{*2} bar, G $\frac{1}{4}$, connection parts required for RB-A2	for RB-A2	MA4001...^{*2}
	Ø 50 mm, 0... ^{*2} bar, G $\frac{1}{4}$	for RB-03 / RB-04	MA5001...^{*2}
connection parts	adapter for MA4001, G $\frac{1}{4}$ m to G $\frac{1}{8}$ f		VI-0201
mounting bracket	made of steel	for RB-02 / RB-A2	BW30-02
mounting nut	made of plastic	for RB-02 / RB-A2	M30x1,5K
mounting bracket	made of steel	for RB-03	BW00-25
mounting nut	made of plastic	for RB-03	M42x1,5K
mounting bracket	made of steel	for RB-04	BW50-03
mounting nut	made of plastic	for RB-04	M50x1,5K
connection clips	made of plastic	for R035	C350100018
connector kit	for RB-02	KP00	KP22
	for RB-A2	KP11	KP33



*1 at 8 bar supply pressure, 6 bar outlet pressure and 1 bar pressure drop
*2 04 = 0...4 bar, 06 = 0...6 bar, 10 = 0...10 bar, 16 = 0...16 bar