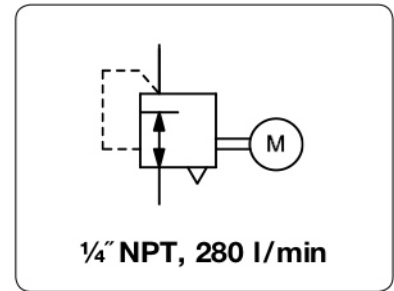


# P180 - Régulateur de pression, proportionnel, motorisé, de grande précision

<b>Description</b>	Motorised air pressure regulator designed for precise pneumatic control using an electrical signal from a remote location. A slip clutch prevents from motor damages at overload or end position limitations.
<b>Media</b>	dry, oil-free and 5 µm filtered compressed air or non-corrosive
<b>Operation</b>	With no electrical power the regulator maintains a precise setpoint despite variable supply pressure and flow rates. When power is applied to the motor the pressure outlet changes.
<b>Power consumption</b>	6 W for 6 rpm motor as standard, 4 W for 2 rpm motor
<b>Control signal</b>	220 V AC, optionally 24 V DC, 24 V AC or 110 V AC
<b>Electrical connector</b>	4 single wires, optionally plug according to DIN 43650A, contact gap 18 mm, 3-pin with coupling socket
<b>Accuracy</b>	at varying supply pressures: < 1 mbar pressure deviation
<b>Air consumption</b>	max. 2.3 l/min, subject to outlet pressure, < 1% of volume flow
<b>Relieving function</b>	relieving
<b>Relief capacity</b>	140 l/min at 1.5 bar outlet and 0.35 bar overpressure above setpoint.
<b>Gauge port</b>	¼"NPT on both sides of the body
<b>Material</b>	Body: zinc die-cast Inner valve: stainless steel and brass
<b>Mounting position</b>	any, preferably upright optionally 280 l/min
<b>Temperature range</b>	-18 °C to 60 °C / 0 °F to 140 °F
<b>Elastomer</b>	NBR/Buna-N
<b>Mounting bracket</b>	black-coated steel



Dimensions			Power	Flow	Switching	Connection	Pressure	Order
A	B	C	consumption	rate	time	thread	range	number
mm	mm	mm	W	l/min*1	s	NPT	bar	

Motorised pressure regulator								P, max. 10 bar, relieving, with constant bleed, control signal 220 V AC, 6 rpm	<b>P180</b>
62	195	14	6	280	40	¼"NPT	0.14...1.8		<b>P180-02A</b>
					30		0.14...4.0		<b>P180-02B</b>
					50		0.14...8.0		<b>P180-02C</b>

## Special options, add the appropriate letter

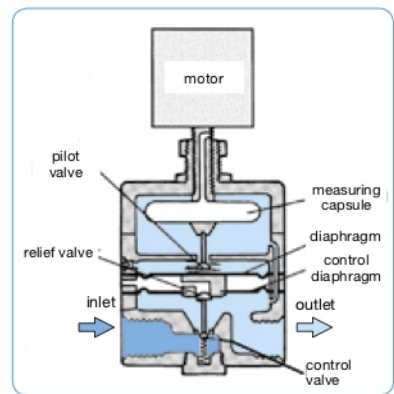
<b>24 V DC</b>	control signal		P180-02 . V
<b>110 V AC</b>	control signal		P180-02 . W
<b>switching time</b>	three times greater than standard	not for 24 V	P180-02 . T
<b>higher exhaust</b>	two times greater than standard		P180-02 . H
<b>DIN connector</b>	connection with DIN plug 30x30 mm		P180-02 . D



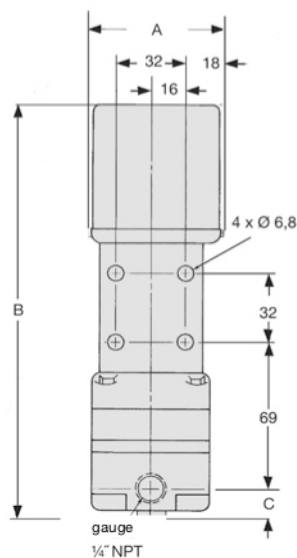
P180

## Accessories, enclosed

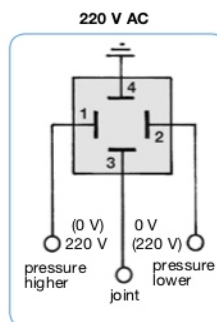
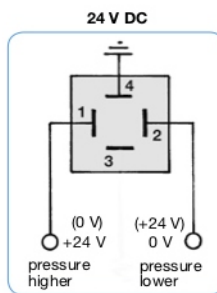
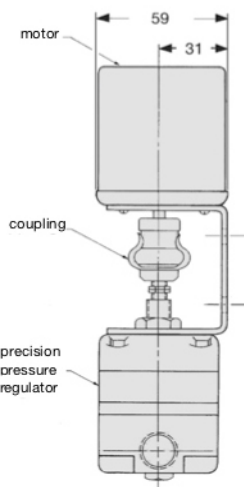
<b>pressure gauge</b>	Ø 50 mm, 0...*2 bar, G¼, connecting parts necessary	<b>MA5002-...*2</b>
<b>gauge connecting parts</b>	adapter ¼"NPT - R¼f	<b>VP-0202N</b>



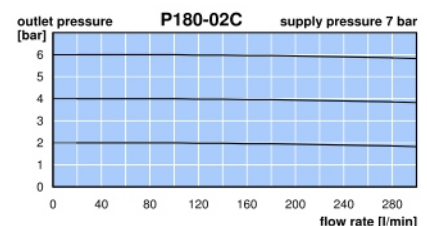
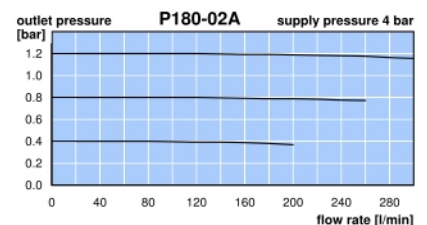
cross-section



P180



connection diagram for option D with DIN plug



\*1 at 7 bar supply pressure and 6 bar outlet pressure  
\*2 02 = 0...2,5 bar, 06 = 0...6 bar, 10 = 0...10 bar