

PV630 - PV631 - Electrovanne piezoélectrique de régulation de pression, très basse consommation

Description

The piezo miniature flow valve is highly reliable and combines precise control of flow rates with power consumption under 7 mW. It is extremely compact and weighs only 23 g. Therefore, it is very suitable for battery-operated portable devices.

Media

Flange connection

Operating pressure

Supply voltage

Electrical connector

Note

Life cycle

Power consumption

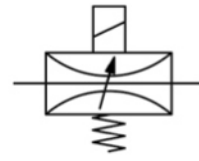
Response time

Mounting position

Material

Preferred application in medical engineering. Electronics are not necessary.
 50 µm filtered compressed air or non-corrosive gases according to CNOMO E06.36.120N (15 x 15 mm) or CNOMO E06.05.80 (30 x 30 mm) with adapter see chart, max. 8 bar
 0...40 V DC, residual ripple < 10%, without reverse voltage protection plug, contact gap 9.4 mm, 3-pin, with coupling socket (Pg 7P), optionally with wire, red (+), black (-)
 The current is to be limited by a > 30 Ω resistor connected in series.
 < 1 billion switching cycles at 6 bar
 < 100 µA, i.e. 7 mW
 50 ms
 any
 Body: PPS plastic
 Inner valve: piezoelectric ceramics

Switch-on consumption 0.6 W
 Protection class IP 65 with coupling socket
 Temperature range 0 °C to 60 °C / 32 °F to 140 °F
 Elastomer: NBR/Buna-N
 Manifold block: brass (M5), zinc die-cast (G½), polyamide (Ø4)



DN 0.3 and DN 0.4 piezo-controlled, 7 mW

Description

Dimensions
 A B C
 mm mm mm

K_v-value
 (m³/h)

Flow rate
 l/min*1

Operating pressure
 max. bar


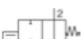
Nominal size
 DN

Order number

Flow valve

flangeable without manifold block, with coupling socket, 0-40 V DC

PV630

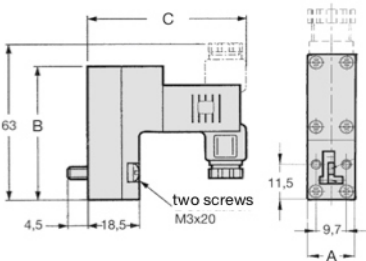
	A	B	C	K _v -value	Flow rate	Operating pressure	Nominal size	Order number
NC 	15	48	51	0.005	0...6	8	0.3	PV630-03
				0.006	0...7	4	0.4	PV630-04
NO 	15	48	51	0.005	0...6	8	0.3	PV631-03
				0.006	0...7	4	0.4	PV631-04

Special options, add the appropriate letter

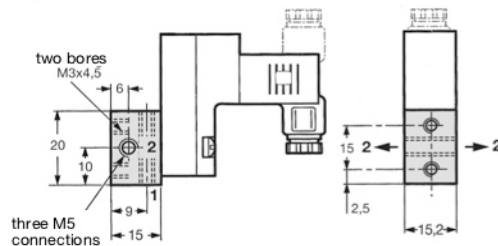
w/o coupling socket protection class IP00 PV63 .-0.X
 with wire length 1 m, red (+), black (-) PV63 .-0.L

Accessories, enclosed

manifold block	M5	AP-01
	G½	AP-02
	Ø4	AP-03
in-line manifold block	Ø4	AP-04
	G½	AP-05

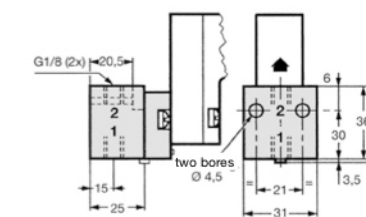


PV630

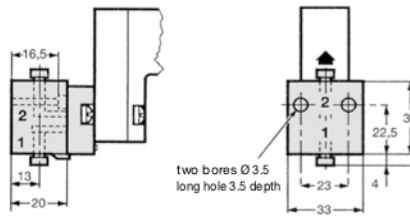


AP-01

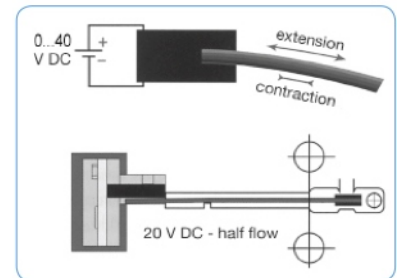
1: inlet
 2: outlet



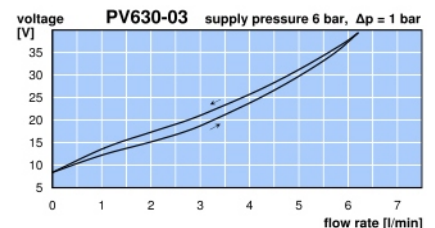
AP-02



AP-03



functional principle



*1 at operating pressure 6 bar and Δp = 1 bar