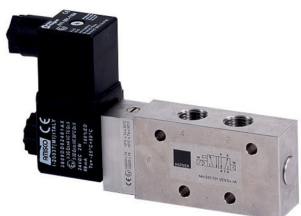

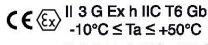



## Distributeurs pneumatiques ATEX pour ambiances explosibles EEx nA et EEx tc - Corps INOX 316L - Plage de température standard



Material: Stainless steel, 316L   
 Zone: 2, 22  
 Temperature range: -10°C ... +50°C  
 Ignition protection gas: Ex nA (non-sparking)  
 Ignition protection dust: Ex t (protection using enclosure)\*  
 Temperature class: T5

Marking on valve   


\* only in combination with appropriate connector.

The following solenoid valves are available:

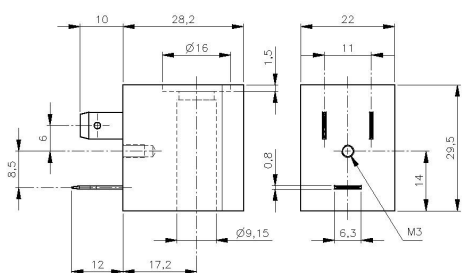
Type	Function	Port size	Installation
MH 311 015 VES Ex nA	3/2-way direct acting	G 1/8"	in-line
MH 310 701 VES Ex nA	3/2-way, single sol.	G 1/4"-1/4" NPT	in-line
MOH 310 701 VES Ex nA	3/2-way, n.o. single sol.	G 1/4"-1/4" NPT	in-line
MH 310 121 VES Ex nA	3/2-way, single sol.	G 1/2"-1/2" NPT	in-line
MH 320 121 VES Ex nA	3/2-way, double sol.	G 1/2"	in-line
MH 510 701 VES Ex nA	5/2-way, single sol.	G 1/4"-1/4" NPT	in-line
MH 510 121 VES Ex nA	5/2-way, single sol.	G 1/2"-1/2" NPT	in-line
MH 520 701 VES Ex nA	5/2-way, double sol.	G 1/4"-1/4" NPT	in-line
MH 520 121 VES Ex nA	5/2-way, double sol.	G 1/2"-1/2" NPT	in-line
MH 53_701 VES Ex nA	5/3-way, different versions	G 1/4"-1/4" NPT	in-line
MH 53_121 VES Ex nA	5/3-way, different versions	G 1/2"-1/2" NPT	in-line

Valves with interface according to NAMUR-standard			
Type	Function	Port size	Installation
MNH 350 701 VES Ex nA	3/2-way & 5/2-way	G 1/4"-1/4" NPT	1/4" NAMUR
MNH 310 701 VES Ex nA	3/2-way, single sol.	G 1/4"-1/4" NPT	1/4" NAMUR
MNH 510 701 VES Ex nA	5/2-way, single sol.	G 1/4"-1/4" NPT	1/4" NAMUR
MNH 520 701 VES Ex nA	5/2-way, double sol.	G 1/4"-1/4" NPT	1/4" NAMUR

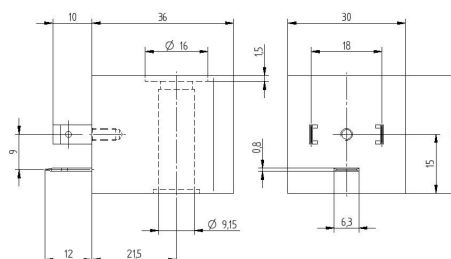
Delivery contains valve with the appropriate operator system, coil, manual and declaration of conformity.

## MA 22 EEx nA T5 24DC MA 30 EEx nA T6 24DC

When this solenoid system is used in combination with "ATEX certified" mechanical components conforming EN 13463-1:2001 and PrEN 13463-5:2000, the entire valve can be used in explosive hazardous environment zone 2 and 22.



MA 22 EEx nA T5 24DC



MA 30 EEx nA T6 24DC



ATEX approved coil for gas (non-sparking) and dust (protection using enclosure) explosion-hazardous environment.

**Coil:**

Voltage tolerance: 24 V DC +/- 10 %

Relative duty cycle: 100 %


Temperature range: -15°... +50° C


Insulation class of insulating materials according to DIN VDE 0580: F

Protection with connector according to EN 60529: IP 65

Moulding material: Termoplasticpolyester

Marking on coil:

T5:  II 3G Ex nA IIC T5 Gc  
II 3D Ex tc IIIC 95°C Dc

T6:  II 3G Ex nA IIC T6 Gc  
II 3D Ex tc IIIC 80°C Dc

Delivery content without ATEX approved connector.

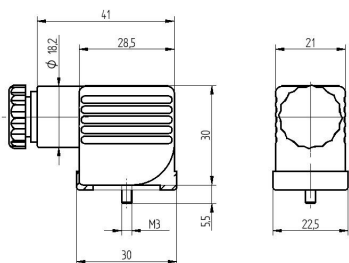
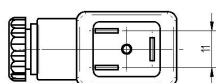
30 mm wide ATEX connector available, type ST 30 Ex nA.  
22 mm wide ATEX connector available, type ST 22 Ex.  
Please refer to page 2.14.5.1.

The ATEX approval is only valid as long as the associated components are used.

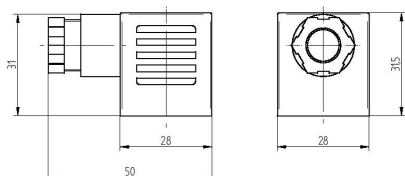
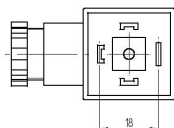
Type	Operating press.	Power cons.	Temp. class	Connection
MA 22 EEx nA T5 24DC	max. 10 bar	3,0 Watt	T5 (100° C)	Industry form B (DW 436 50)
MA 30 EEx nA T6 24DC	max. 10 bar	2,0 Watt	T6 (85° C)	Form A (ISO 4400)

Other voltages are available on request.

## Connecteur électrique - Pour ambiances explosibles (ATEX) - Compatible avec bobines ST22 / ST30 EEx ia et EEx nA



**ST 22 Ex**



**ST 30 Ex ia / ST 30 Ex nA**



Connectors as accessories for explosion-proof coils.

### **Type ST 22 Ex**

Connector to be used in combination with MA 22 Ex nA. Connector is classified for zone 2 and 22 cat. IIG/D. Includes flat seal.

### **Type ST 30 Ex ia**

Connector which is to be used in combination with the coil type MA 30 Ex ia tD II CT6 24DC. Connector has no separate ATEX certification. Connector is classified for zone 21, cat. IID. Can also be used in combination with intrinsically safe coils in zone 1 (cat. IIG). Includes flat silicon seal.

### **Type ST 30 Ex nA**

Connector to be used in combination with MA 30 Ex nA. Connector is classified for zone 2 and 22, cat. IIIG and IID. Includes profiled NBR seal.

Other connectors are available on request.

Type	Form	LED	VAR	Operat. voltage	Max. current	Cable diameter
ST 22 Ex	Industrial	no	no	0 - 250 V	10 A	6 - 8 mm
ST 30 Ex ia	A, ISO 4400	no	no	0 - 250 V	10 A	6 - 8 mm
ST 30 Ex nA	A, ISO 4400	no	no	0 - 250 V	10 A	4 - 8 mm