

Distributeurs pneumatiques ATEX pour ambiances explosibles EEx d - Corps aluminium - Plage de température standard





Interface between valve body and solenoid system according to CNOMO, therefore the types are called MC.

Base plate assembly due to solenoid coil is not possible.

Material: Aluminum, anodized
 Zone: 1, 2, 21, 22
 Temperature range: -10°C ... +50°C
 Solenoid coil limited to +40°C
 Ignition protection type: Ex d – flameproof
 Temperature class: T6 (solenoid)

Marking on valve

CE  II 2 G Ex h IIC T6 Gb
 -10°C ≤ Ta ≤ +50°C
 CE  II 2 D Ex h IIIC T80°C
 Db -10°C ≤ Ta ≤ +50°C

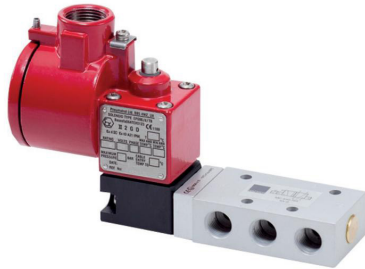
The following solenoid valves are available:

Type	Function	Port size	Installation
MC 210 501 Ex d	2/2-way, single sol.	G 1/8"	in-line
MC 210 701 Ex d	2/2-way, single sol.	G 1/4"	in-line
MC 310 501 Ex d	3/2-way, single sol.	G 1/8"	in-line
MOC 310 501 Ex d	3/2-way, n.o. single sol.	G 1/8"	in-line
MC 310 701 Ex d	3/2-way, single sol.	G 1/4"	in-line
MOC 310 701 Ex d	3/2-way, n.o. single sol.	G 1/4"	in-line
MC 310 121 Ex d	3/2-way, single sol.	G 1/2"	in-line
MOC 310 121 Ex d	3/2-way, n.o. single sol.	G 1/2"	in-line
MC 320 501 Ex d	3/2-way, double sol.	G 1/8"	in-line
MC 320 701 Ex d	3/2-way, double sol.	G 1/4"	in-line
MC 320 121 Ex d	3/2-way, double sol.	G 1/2"	in-line
MC 510 501 Ex d	5/2-way, single sol.	G 1/8"	in-line
MC 510 701 Ex d	5/2-way, single sol.	G 1/4"	in-line
MC 510 121 Ex d	5/2-way, single sol.	G 1/2"	in-line
MC 520 501 Ex d	5/2-way, double sol.	G 1/8"	in-line
MC 520 701 Ex d	5/2-way, double sol.	G 1/4"	in-line
MC 520 121 Ex d	5/2-way, double sol.	G 1/2"	in-line
MC 53_ 501 Ex d	5/3-way, different version	G 1/8"	in-line
MC 53_ 701 Ex d	5/3-way, different version	G 1/4"	in-line
MC 53_ 121 Ex d	5/3-way, different version	G 1/2"	in-line

Valves with interface according to NAMUR-standard			
MNC 350 701 Ex d	3/2-way & 5/2-way	G 1/4"	1/4" NAMUR
MNC 310 701 Ex d	3/2-way, single sol.	G 1/4"	1/4" NAMUR
MNC 310 711 Ex d	3/2-way, single sol.	G 1/4"	1/4" NAMUR
MNC 310 121 Ex d	3/2-way, single sol.	G 1/2"	1/2" NAMUR
MNC 510 701 Ex d	5/2-way, single sol.	G 1/4"	1/4" NAMUR
MNC 510 711 Ex d	5/2-way, single sol.	G 1/4"	1/4" NAMUR
MNC 510 121 Ex d	5/2-way, single sol.	G 1/2"	1/2" NAMUR
MNC 520 701 Ex d	5/2-way, double sol.	G 1/4"	1/4" NAMUR
MNC 520 121 Ex d	5/2-way, double sol.	G 1/2"	1/2" NAMUR
MNC 53_ 701 Ex d	5/3-way, different version	G 1/4"	1/4" NAMUR
MNC 53_ 121 Ex d	5/3-way, different version	G 1/2"	1/2" NAMUR

Delivery contains valve with appropriate operator system, coil, manual and declaration of conformity.

Distributeurs pneumatiques ATEX pour ambiances explosibles Ex d - Corps aluminium - Basse température



Material:	Aluminum, anodized	Interface between valve body and solenoid system
Zone:	1, 2, 21, 22	according to CNOMO, therefore the types are called
Temperature range:	-50°C ... +50°C ❄ Solenoid coil limited to +40°C	MC.
Ignition protection type:	Ex d – flameproof	Base plate assembly due to solenoid coil is not
Temperature class:	T6 (solenoid)	possible.

Marking on valve

II 2 G Ex h IIC T6 Gb
 -50°C ≤ Ta ≤ +50°C

 II 2 D Ex h IIC T80°C
 Db -50°C ≤ Ta ≤ +50°C

The following solenoid valves are available:

Type	Function	Port size	Installation
MC 310 501 TT Ex d	3/2-way, single sol.	G 1/8"	in-line
MOC 310 501 TT Ex d	3/2-way, n.o. single sol.	G 1/8"	in-line
MC 310 701 GTT Ex d	3/2-way, single sol.	G 1/4" - 1/4" NPT	in-line
MOC 310 701 GTT Ex d	3/2-way, n.o. single sol.	G 1/4" - 1/4" NPT	in-line
MC 320 501 TT Ex d	3/2-way, double sol.	G 1/8"	in-line
MC 320 701 GTT Ex d	3/2-way, double sol.	G 1/4"	in-line
MC 510 501 GTT Ex d	5/2-way, single sol.	G 1/8"	in-line
MC 510 701 GTT Ex d	5/2-way, single sol.	G 1/4" - 1/4" NPT	in-line
MC 520 501 GTT Ex d	5/2-way, double sol.	G 1/8"	in-line
MC 520 701 GTT Ex d	5/2-way, double sol.	G 1/4" - 1/4" NPT	in-line
MC 53_501 GTT Ex d	5/3-way, different version	G 1/8"	in-line
MC 53_701 GTT Ex d	5/3-way, different version	G 1/4" - 1/4" NPT	in-line

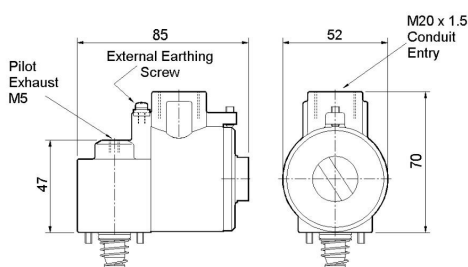
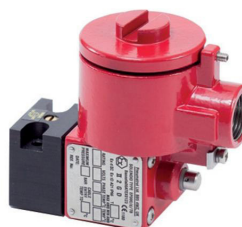
Valves with interface according to NAMUR-standard

MNC 310 701 TT Ex d	3/2-way, single sol.	G 1/4" - 1/4" NPT	1/4" NAMUR
MNC 510 701 TT Ex d	5/2-way, single sol.	G 1/4" - 1/4" NPT	1/4" NAMUR
MNC 510 711 TT Ex d	5/2-way, single sol.	G 1/4"	1/4" NAMUR
MNC 520 701 TT Ex d	5/2-way, double sol.	G 1/4" - 1/4" NPT	1/4" NAMUR
MNC 531 701 TT Ex d	5/3-way, different version	G 1/4" - 1/4" NPT	1/4" NAMUR

Delivery contains valve with appropriate operator system, coil, manual and declaration of conformity.

MA 52 EEx d IIC T₆ / MA 52 EEx d IIC T₆ VES

When this solenoid system is used in combination with "ATEX certified" mechanical components conforming EN 13463-1:2001 and PrEN 13463-5:2000, the entire valve can be used in explosive hazardous environment zone 1, 2, 21 and 22.



MA 52 EEx D IIC T₆__ (VES)

ATEX approved flameproof coil for gas and dust explosion hazardous environment. Solenoids with IEC-Ex certificate on request.

Voltage: 24VDC, 110VAC, 240VAC
 Voltage tolerance: - 10...+ 10 %
 Relative duty cycle: 100 %
 Temperature range: T6: -65°C...+40°C
 T4: -65°C...+60°C, valve limited to -50°C

Ignition protection type: flameproof

Protection according to ENBS60529 : 1992 : IP 66 with appropriate cable gland

Material solenoid coil: Stainless Steel

Coil rating according to DIN VDE 0580: Class F

Cable Gland: M20 x 1.5

Marking on coil:
 DC-Version:
  II 2G Ex db IIC T6 Gb
 II 2D Ex tb IIIC T85°C Db
 AC-Versions:
  II 2G Ex db IIC T4 Gb
 II 2D Ex tb IIIC T135°C Db

glands can be supplied on request.

Technical details pilot head :

Material : Standard: Aluminum
 Type VES: Stainless Steel, manual override and nozzle made of brass

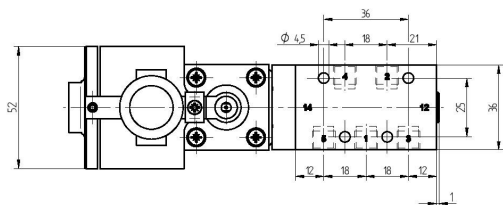
Manual override: bistable to turn, others on request

The ATEX approval is only valid as long as the associated components are used.

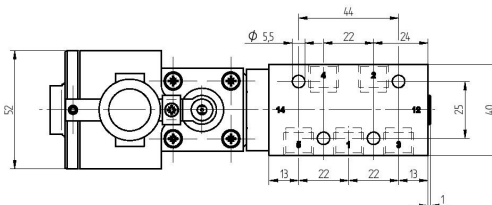
Delivery content without cable gland. Ex d rated cable

Type	Operating press.	Power cons.	Temperature class
MA 52 EEx d IIC T6 24 DC	max. 10 bar	3,0 Watt	T6 (85° C)
MA 52 EEx d IIC T6 24 DC VES	max. 10 bar	3,0 Watt	T6 (85° C)
MA 52 EEx d IIC T4 110AC	max. 10 bar	9,6 VA	T4 (135° C)
MA 52 EEx d IIC T4 110AC VES	max. 10 bar	9,6 VA	T4 (135° C)
MA 52 EEx d IIC T4 240AC	max. 10 bar	9,6 VA	T4 (135° C)
MA 52 EEx d IIC T4 240AC VES	max. 10 bar	9,6 VA	T4 (135° C)

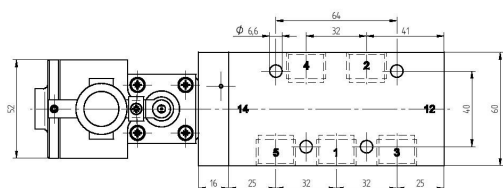
Bobines EEx d - Spécifications - Largeur 52 mm - Sur presse-étoupe Exemples d'implantations sur distributeurs



MC 510 501 Ex d



MC 510 701 Ex d/
MNC 510 701 Ex d



MC 510 121 Ex d/
MNC 510 121 Ex d