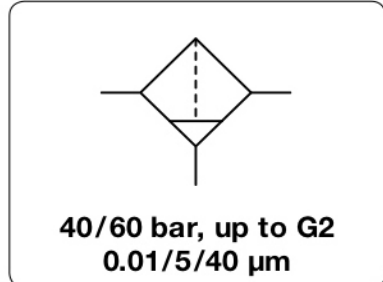


F445 - F465 - Filtre coalescent moyenne pression pour air comprimé, 60 bar

Description	Compressed air filter for up to 60 bar operating pressure with various filter elements. Mounting in horizontal position, flow direction indicated by arrow.
Filter element	5 µm and 40 µm made of sintered bronze, 0.01 µm coalescing filter made of borosilicate fibres with stainless steel jacket and foam protection
Filtration efficiency	coalescing filter: 99.999% based on 0.01 µm particle size
Bowl	metal version without sight glass
Drainage	manual drain as standard
Supply pressure	max. 60 bar
Temperature range	0 °C to 90 °C / 32 °F to 194 °F, for appropriately conditioned compressed air down to -30 °C / -22 °F
Material	Body: black, anodized aluminium Bowl: brass at G $\frac{3}{8}$ to G1, aluminium at G1½ and G2 Elastomer: NBR/Buna-N



Dimensions			Bowl	Flow	Filter	Connection	Order
A	B	C	Design	Capacity	rate	thread	number
mm	mm	mm	made of	l	m ³ /h*1	µm	G

High pressure filter up to 40 bar								with manual drain, 99.999% at 0.01 µm	F445
72	200	168	metal	0.08	162	2 700	40	G $\frac{3}{8}$ " ²	F445-03EL
65	200	168			168	2 800		G $\frac{1}{2}$ "	F445-04EL
92	210	170	metal	0.10	198	3 300		G $\frac{3}{4}$ " ²	F445-06EL
80	210	170			210	3 500		G1	F445-08EL
150	285	243	metal	0.30	1200	20 000		G1½" ²	F445-12EL
140	285	243			1320	22 000		G2	F445-16EL
72	200	168	metal	0.08	126	2 100	5	G $\frac{3}{8}$ " ²	F445-03GL
65	200	168			138	2 300		G $\frac{1}{2}$ "	F445-04GL
92	210	170	metal	0.10	156	2 600		G $\frac{3}{4}$ " ²	F445-06GL
80	210	170			168	2 800		G1	F445-08GL
150	285	243	metal	0.30	900	15 000		G1½" ²	F445-12GL
140	285	243			1080	18 000		G2	F445-16GL
72	200	168	metal	0.08	150	2 500	0.01	G $\frac{3}{8}$ " ²	F445-03IL
65	200	168			162	2 700		G $\frac{1}{2}$ "	F445-04IL
92	210	170	metal	0.10	192	3 200		G $\frac{3}{4}$ " ²	F445-06IL
80	210	170			204	3 400		G1	F445-08IL
150	285	243	metal	0.30	1 140	19 000		G1½" ²	F445-12IL
140	285	243			1 260	21 000		G2	F445-16IL

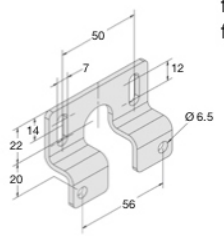
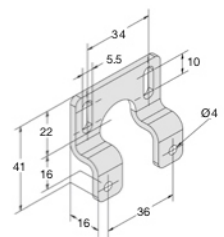


High pressure filter up to 60 bar								with manual drain, 99.999% at 0.01 µm	F465
72	185	160	metal	0.08	162	2 700	40	G $\frac{3}{8}$ " ²	F465-03EL
65	185	160			168	2 800		G $\frac{1}{2}$ "	F465-04EL
92	200	170	metal	0.10	198	3 300		G $\frac{3}{4}$ " ²	F465-06EL
80	185	160			210	3 500		G1	F465-08EL
72	185	160	metal	0.08	126	2 100	5	G $\frac{3}{8}$ " ²	F465-03GL
65	185	160			135	2 300		G $\frac{1}{2}$ "	F465-04GL
92	200	170	metal	0.10	156	2 600		G $\frac{3}{4}$ " ²	F465-06GL
80	200	170			168	2 800		G1	F465-08GL
72	185	160	metal	0.08	150	2 500	0.01	G $\frac{3}{8}$ " ²	F465-03IL
65	185	160			162	2 700		G $\frac{1}{2}$ "	F465-04IL
92	200	170	metal	0.10	192	3 200		G $\frac{3}{4}$ " ²	F465-06IL
80	200	170			204	3 400		G1	F465-08IL

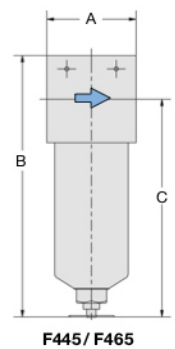
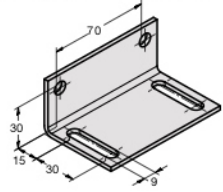
Special options, add the appropriate letter
for oxygen specially cleaned F4. 5- ... 15

Accessories, enclosed

mounting bracket made of steel



for G $\frac{3}{8}$ " and G $\frac{1}{2}$ " **BW00-15**
for G $\frac{3}{4}$ " and G1 **BW00-16**
for G1½" and G2 **BW00-60**



*1 at 7 bar operating pressure and 0.33 bar pressure drop

*2 reduced from the next bigger filter size

