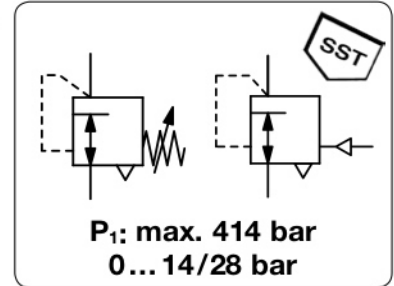


# RH4 - Régulateur haute pression, corps en laiton ou acier inoxydable 316, également proposé en version pilotée, booster

<b>Description</b>	High pressure regulator with balanced valve design ensuring stable downstream pressure. Excellent for low pressure.		
<b>Media</b>	compressed air, non-corrosive gases or liquids		
<b>Supply pressure</b>	max. 414 bar		
<b>Exhaust</b>	for compressed air or gases: ¼" NPT tapped exhaust for inlet and outlet		
<b>Leakage</b>	bubble-tight		
<b>Adjustment</b>	by black plastic knob, optionally pneumatical control through diaphragm or piston		
<b>Relieving function</b>	for compressed air or gases: relieving for liquids: non-relieving		
<b>Gauge port</b>	non, optionally ¼" NPT for inlet and outlet		
<b>Mounting position</b>	any		
<b>Temperature range</b>	-26 °C to 74 °C / -15 °F to 165 °F		
<b>Weight</b>	2.2 kg		
<b>Material</b>	Body: brass, optionally 316 stainless steel	O-rings: NBR/Buna-N, on request FKM, Kalrez, E.P.	
	Main valve seat: Vespel SP21	Relieving valve: Vespel SP21	
	Inner valve: Monel, stainless steel	Filter: bronze, 40 µm, only for liquids	



Dimensions			K <sub>v</sub> -value (m³/h)	Flow rate		Connection thread NPT	Pressure range bar	Order number
A mm	B mm	C mm		m³/h*1	l/min*1			

High pressure regulator 414 bar								
76	159	19	0.3	510	8500	¾" NPT	0... 14	<b>RH4</b> brass body, Vespel SP21, NBR/Buna-N relieving, without gauge port
							0... 28	<b>RH4-03A</b>
						½" NPT	0... 14	<b>RH4-03B</b>
							0... 28	<b>RH4-04A</b>
							0... 28	<b>RH4-04B</b>



RH4-...S

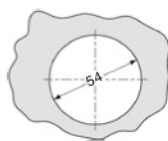
## Special options, add the appropriate letter

<b>booster version</b>	½" NPT, 0...41 bar, brass, diaphragm control, P <sub>st</sub> = 5.8 bar		<b>RH4-04J1</b>
	piston control		<b>RH4-04J2</b>
<b>non-relieving</b>	without relieving function		<b>RH4-0..K</b>
<b>stainless steel body</b>			<b>RH4-0..S</b>
<b>gauge port</b>	¼" NPT for inlet and outlet		<b>RH4-0..M</b>
<b>brass pressure gauge</b>	inlet side <b>HM</b>	outlet side	<b>RH4-0..MGM</b>
<b>SST pressure gauge</b>	inlet side <b>H</b>	outlet side	<b>RH4-0..MG</b>

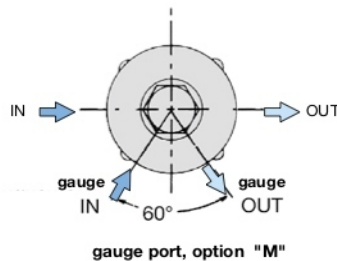
## Accessories, enclosed

**mounting nut** for panel mounting

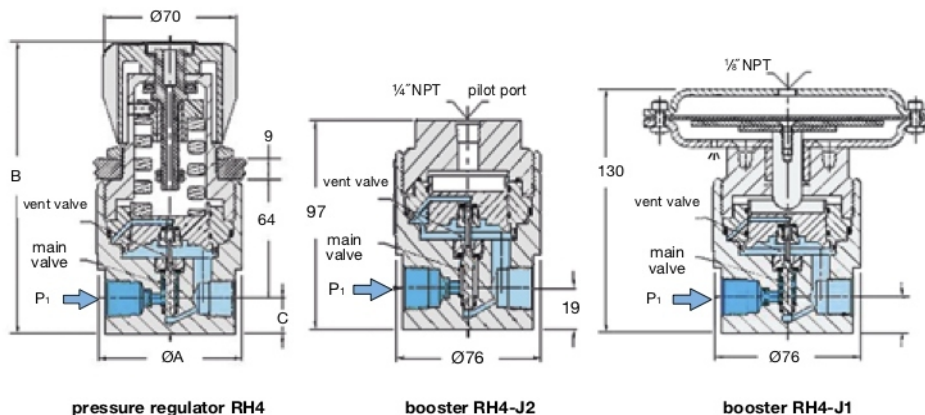
**62634**



panel cut-out



gauge port, option "M"



pressure regulator RH4

booster RH4-J2

booster RH4-J1

\*1 at 280 bar supply pressure and 14 bar outlet pressure

