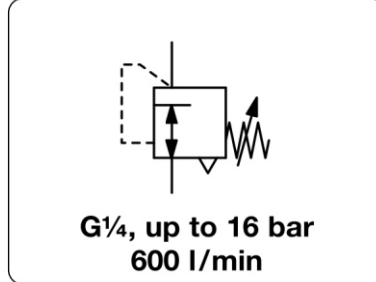


R217 - Régulation de pression de précision, sans consommation, économique, diaphragme Viton, avec option disponible "sans graisse ni huile"

Description	Diaphragm pressure regulator with good regulation accuracy at varying volume flow.		
Media	compressed air or non-corrosive gases		
Supply pressure	max. 16 bar		
Accuracy	response sensitivity: < 350 mbar		
Air consumption	without constant bleed		
Adjustment	by handwheel with locknut, suitable for panel mounting		
Relieving function	relieving		
Gauge port	G $\frac{1}{4}$ on both sides of the body, one screw plug supplied		
Mounting position	any		
Temperature range	0 °C to 80 °C / 32 °F to 176 °F		
Material	Body: zinc die-cast	O-ring: NBR/Buna-N	
	Spring cage: zinc die-cast	Bottom screw: POM	
	Diaphragm: FKM		



Dimensions			K _v -value	Flow rate	Connection thread	Pressure range	Order number
A	B	C					
mm	mm	mm	(m ³ /h)	m ³ /h*1 l/min*1	G	bar	

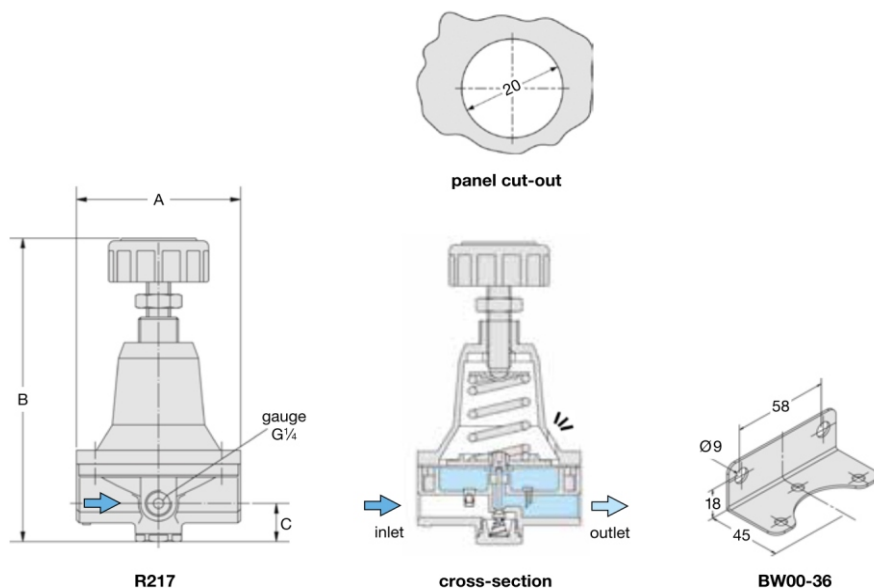
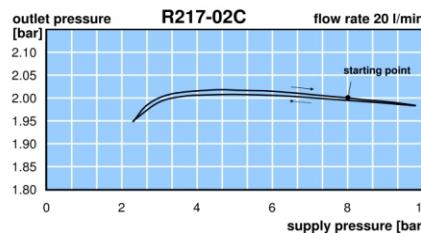
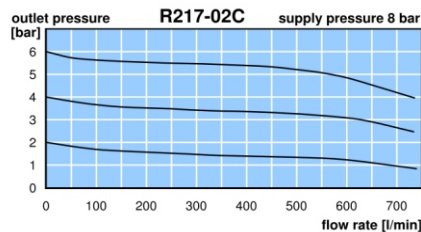
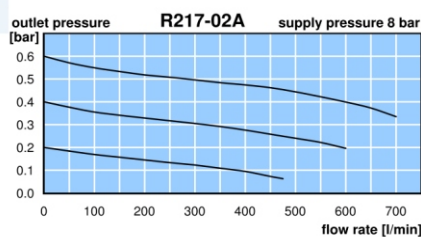
Precision pressure regulator				supply pressure max. 16 bar, relieving, without constant bleed		R217	
82	148	20	0.3	36	600	G $\frac{1}{4}$	
						0.01 ... 0.5	R217-020
						0.01 ... 1	R217-02A
						0.20 ... 3	R217-02B
						0.40 ... 6	R217-02C
						0.50 ... 10	R217-02D
						0.70 ... 16	R217-02E



R217

Special options,	add the appropriate letter	
free of grease and oil	specially cleaned	R217-0..L

Accessories,	enclosed	
pressure gauge	Ø 63 mm, 0...*2 bar, G $\frac{1}{4}$	MA6302-..*2
mounting bracket	made of steel	BW00-36



*1 at 8 bar supply pressure, 6 bar outlet pressure und 1 bar pressure drop
*2 01 = 0...1 bar, 04 = 0...4 bar, 06 = 0...6 bar, 10 = 0...10 bar, 16 = 0...16 bar

