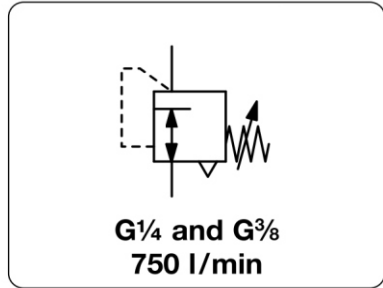


R216 - Régulateur de précision, sans consommation, 10 à 3500 mbar

R216 - Precision pressure regulator, without constant bleed, 10 to 3500 bar

Description	Diaphragm pressure regulator with good regulation accuracy at varying volume flow, especially at low pressure.		
Media	compressed air or non-corrosive gases		
Supply pressure	max. 21 bar		
Accuracy	response sensitivity: < 100 mbar		
Air consumption	without constant bleed		
Adjustment	by T-handle with locknut, mounting bracket not possible by handwheel, suitable for panel mounting		
Relieving function	relieving, optionally non-relieving		
Gauge port	G $\frac{1}{8}$ on the bottom side of the body, one screw plug supplied		
Mounting position	any		
Temperature range	0 °C to 50 °C / 32 °F to 122 °F for handwheel version 0 °C to 80 °C / 32 °F to 176 °F for T-handle version		
Material	Body: zinc die-cast	Elastomer: NBR/Buna-N	Bottom screw: brass



Dimensions			Adjustment	Kv-value (m ³ /h)	Flow rate		Connection thread G	Pressure range bar	Order number
A	B	C	by		m ³ /h*1	l/min*1			

Precision pressure regulator				supply pressure max. 21 bar, relieving, without constant bleed				R216	
108	162	32	T-handle	0.39	42	700	G $\frac{1}{4}$	0.01 ... 0.6	R216-02E
								0.01 ... 1.6	R216-02F
								0.01 ... 3.5	R216-02H
			0.42	45	750	G $\frac{3}{8}$	0.01 ... 0.6	R216-03E	
							0.01 ... 1.6	R216-03F	
							0.01 ... 3.5	R216-03H	
108	162	32	handwheel for panel mounting	0.39	42	700	G $\frac{1}{4}$	0.01 ... 0.6	R216-02EP
								0.01 ... 1.6	R216-02FP
								0.01 ... 3.5	R216-02HP
				0.42	45	750	G $\frac{3}{8}$	0.01 ... 0.6	R216-03EP
								0.01 ... 1.6	R216-03FP
								0.01 ... 3.5	R216-03HP



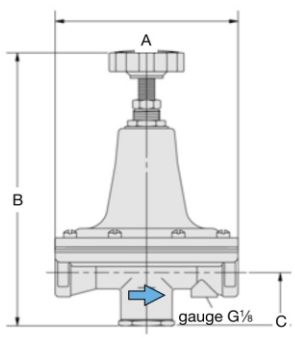
R216-02F

Special options, add the appropriate letter		
non-relieving	without relieving function	R216-0...K
NPT	connection thread (not for G $\frac{3}{8}$ with T-handle)	R216-0...N
free of oil and grease	specially cleaned	R216-0...L

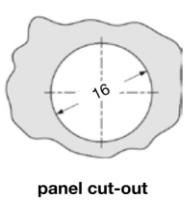


R216-03FP
for panel mounting

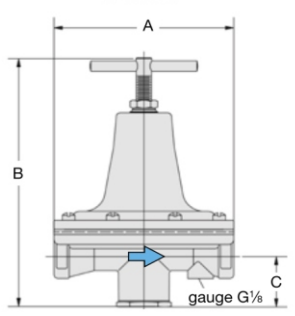
Accessories, enclosed		
pressure gauge	Ø 63 mm, 0... ^{*2} bar, G $\frac{1}{4}$, connection parts required	MA6302-... ^{*2}
gauge connection	pressure gauge made of brass, adapter G $\frac{1}{8}$ a-G $\frac{1}{4}$ i	AM-02
mounting bracket	made of steel, mounting nut at the device for R216-0...P	BW20-02



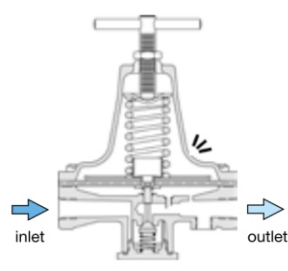
R216-...P



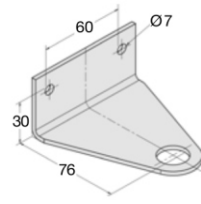
panel cut-out



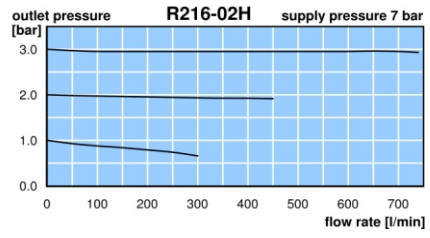
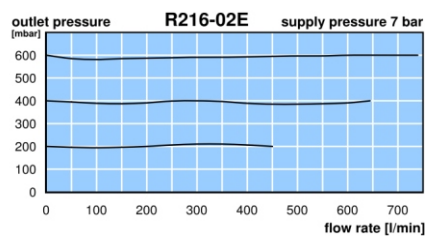
R216



cross-section



BW20-02



*1 at 7 bar supply pressure and 3 bar outlet pressure

*2 01 = 0...1 bar, 02 = 0...2.5 bar, 04 = 0...4 bar

