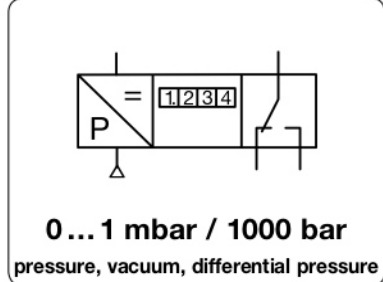


MKA - Manomètre numérique, à sonde de pression intérieure ou extérieure, à montage en tableau

Description	Suitable for measurement of positive pressure, vacuum or differential pressure.
Media	compressed air or non-corrosive gases
Supply voltage	15...30 V DC standard, optionally 230 V AC \pm 10%
Electrical connector	plug with 7-pin screw terminal for cable cross-sectional area 0.14...1.5 mm ²
Pneumatic connection	P+ : pos. pressure P- : vacuum P+/P- : differential pressure, the higher pressure is to be connected at P+ plug nipple up to 1 bar, sleeve with union nut from 2 bar on, each for hose internal diameter of \varnothing 4 mm
Display	3½-digit LCD display, max. \pm 1999, 14 mm tall, black numbers
Output signal	red LED lights up at overpressure, then measurement is faulty
Linearity	0...10 V, impedance > 10 k Ω , optionally 4...20 mA, impedance < 500 Ω
Long-term stability	< 0.1% FS per year at > 25 mbar, < 1% FS per year at > 5 mbar, < 2% FS per year at < 5 mbar range
Temperature sensitivity	see chart, at 0 °C to 50 °C / 32 °F to 122 °F
Response time	100 ms
Temperature range	-20 °C to 50 °C / -4 °F to 122 °F
Material	Housing: aluminium
	Overpressure see chart
	Hysteresis < 0.1% FS
	Repeatability see chart
	Resolution 1 digit
	Protection class IP 54

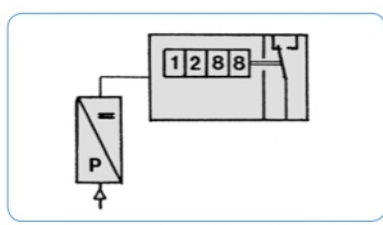


Repeatability	Temperature error	Linearity error	Over-pressure	Measurement range	Order number
% FS	% FS	% FS	max. bar	mbar / bar	

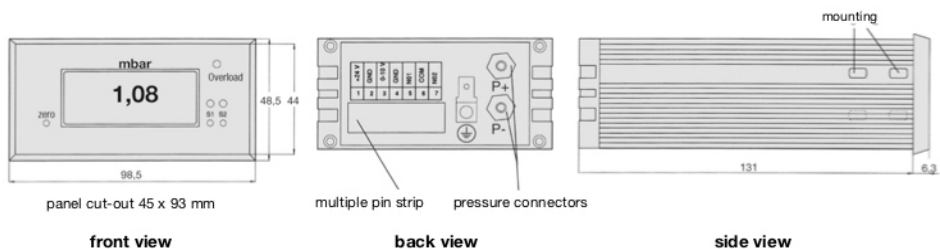
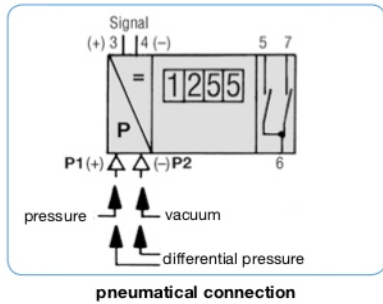
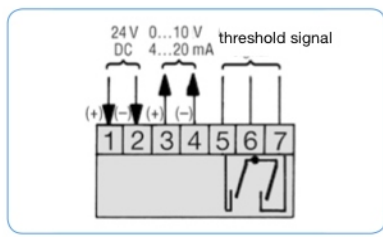
Digital gauge	for compressed air, measurement of positive pressure, vacuum and differential pressure, 24 V DC, outlet signal 0...10 V, 3½-digit display				MKA
1.0	4.0	1.0	0.25	0 ... 1 mbar	MKA-A1
0.3	2.5	0.8	0.25	0 ... 2.5 mbar	MKA-A2
0.3	1.2	0.8	0.25	0 ... 5 mbar	MKA-A5
0.2	1.0	0.8	0.25	0 ... 10 mbar	MKA-B1
0.1	1.0	0.7	0.35	0 ... 25 mbar	MKA-B2
0.1	1.0	0.7	0.35	0 ... 50 mbar	MKA-B5
0.1	1.0	0.5	0.35	0 ... 100 mbar	MKA-C1
0.1	1.0	0.5	0.75	0 ... 250 mbar	MKA-C2
0.1	1.0	0.5	1.5	0 ... 500 mbar	MKA-C5
0.1	1.0	0.5	3.0	-1 ... 1 bar	MKA-V1
0.1	1.0	0.5	3.0	0 ... 1 bar	MKA-O1
0.1	1.0	0.5	4.0	0 ... 2 bar	MKA-O2
0.1	2.0	0.5	10	0 ... 8 bar	MKA-O8
0.1	2.0	0.5	12	0 ... 10 bar	MKA-O10
0.1	2.3 mbar	1 mbar	3.3	0.7... 1.1 bar _{abs}	MKA-S1



Digital gauge for external sensor	0...10 V input signal, supply voltage 24 V DC, 3½-digit display		MKA*2
96	48	137 e.g. for pressure transducer	MKA-00



Special options, add the appropriate letter		
two limit switches	with LED display, 230 V AC, 1 A, hysteresis 2% FS	MKA-..S
linearity < 0.2% FS	from 100 mbar	MKA-..B
4...20 mA output signal	impedance < 500 Ω	MKA-..A
4...20 mA input signal	internal resistance 100 Ω	MKA-00A
P _a indication	< 20 mbar: indication P _a > 20 mbar: indication kP _a	MKA-..P
230 V AC	supply voltage	MKA-..V
RS232*1	interface, 8 bit without parity	MKA-..R
deviant measurement range	to be indicated on order	MKA-XX



*1 Handshake on/off, Baudrate 9600

*2 indicate pressure range by order

