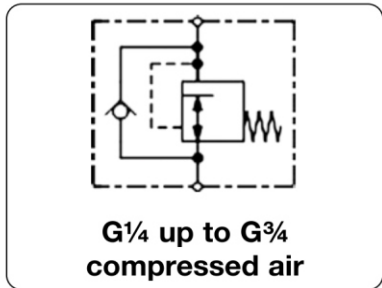


232 - Régulateur de pression en ligne, non réglable, consigne de 2 à 8 bar, G1/4" à G3/4"

232 - In-line pressure regulator, 2 to 8 bar, factory setted, G1/4" to G3/4" ported

Description	In-line pressure regulator with factory-set outlet pressure, reducing from e.g. 15 bar to 6 bar. With an outlet pressure tolerance of only $\pm 10\%$ ^{*2} it is especially suitable for nailing machines.
Benefits	<ul style="list-style-type: none"> • Higher safety through lower pressure. Tools and equipment protected against pressure damages. • Cost reduction through substantially reduced air consumption. Longer service life. • Noise reduction for tools.
Media	compressed air or non-corrosive gases
Supply pressure	max. 25 bar
Adjustment	Select the pressure regulator according to the desired outlet pressure. The outlet pressure cannot be subsequently adjusted. This safeguards against tampering.
Relieving function	relieving at removal of supply pressure
Temperature range	0 °C to 80 °C / 32 °F to 176 °F
Material	Body: aluminium Elastomer: NBR/Buna-N



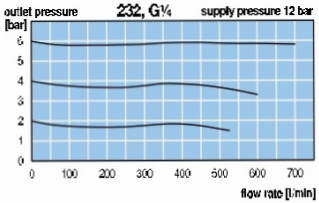
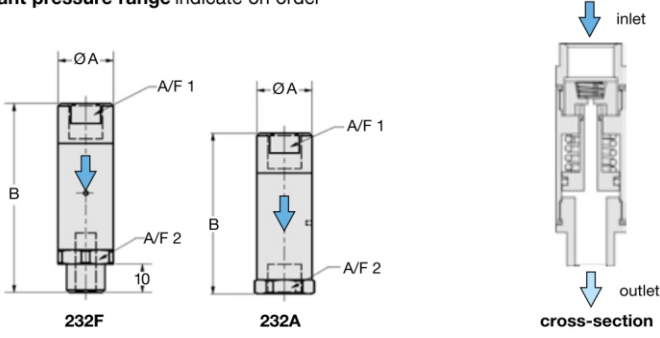
ØA	Dimensions		Flow rate	Supply pressure	Connection thread	Outlet pressure	Order number
	B	A/F 1 A/F 2					

Regulator with relieving function				P _i : max. 25 bar, accuracy*2, aluminium				232
19	69	17	19	500	25	G1/4fm	2	232F0220
								232F0230
								232F0240
								232F0250
								232F0260
								232F0270
19	59	17	19	500	25	G1/4	2	232A0220
								232A0230
								232A0240
								232A0250
								232A0260
								232A0270
25	63	22	25	1400	25	G3/8	2	232A0320
								232A0330
								232A0340
								232A0350
								232A0360
								232A0370
								232A0380
								232A0380
30	68	27	30	1400	25	G1/2	2	232A0420
								232A0430
								232A0440
								232A0450
								232A0460
								232A0470
40	102	34	40	2500	25	G3/4	2	232A0520
								232A0540
								232A0560
								232A0580



Special options, add the appropriate letter

NPT connection thread 232. 1 . . .
deviant pressure range indicate on order 232. . . X X



*1 P_s = 12 bar; Δp = 0.5 bar
 *2 Tolerance: < 4 bar ± 0.3 bar (air, P_s = 6 bar, 10 NI/min)
 ≥ 4 bar ± 10% (air, P_s = 10 bar, 10 NI/min)