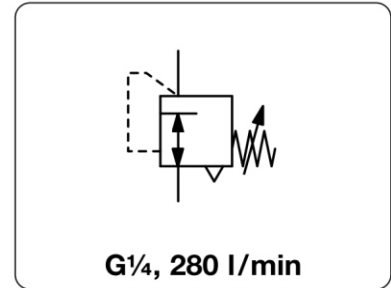


11-818 - Régulateur de pression, de précision, à consommation, bonne stabilité face à des variations de consommation air ou de pression d'alimentation

Description	Precision pressure regulator designed for precise pressure control in the event of changes in flow and supply pressure. Due to constant bleed slight blow-off sounds existing.		
Media	dry, oil-free and 25 µm filtered compressed air		
Supply pressure	max. 8 bar for 0.02...0.5 bar,	max. 10 bar for 0.07...4 bar,	max. 14 bar for 0.4...10 bar
Accuracy	at varying supply pressures: < 20 mbar pressure deviation at varying volume flows: < 30 mbar pressure deviation at 5 °C / K temperature variation: < 3 mbar pressure deviation		
Air consumption	max. 2 l/min, subject to outlet pressure		
Adjustment	by handwheel for panel mounting, optionally by spindle		
Relieving function	relieving, 3 mm exhaust diameter		
Gauge port	G¼ on both sides of the body, optionally without gauge port		Mounting position any
Temperature range	0 °C to 70 °C / 32 °F to 158 °F, for appropriately conditioned compressed air down to -30 °C / -22 °F		
Material	Body: zinc die-cast	Inner valve: brass, plastic	Elastomer: NBR/Buna-N



Dimensions			Description	P ₁ max. bar	Flow rate l/min*1	Connection thread G	Pressure range bar	Order number
A	B	C						

Precision pressure regulator			P1: max. 8 / 10 / 14 bar, relieving, with constant bleed, accuracy < 30 mbar, K _v = 0.16 m³/h					11-818
55	137	13	handwheel	8	280	G¼	0.02...0.5	11-818-999
			w/o gauge port	10			0.07...4.0	11-818-100
				14			0.40...10	11-818-110
55	137	13	handwheel	8	280	G¼	0.02...0.5	11-818-987
			with gauge port	10			0.07...4.0	11-818-993
				14			0.40...10	11-818-991
55	137	13	spindle	8	280	G¼	0.02...0.5	11-818-998
			w/o gauge port	10			0.07...4.0	11-818-101
				14			0.40...10	11-818-112

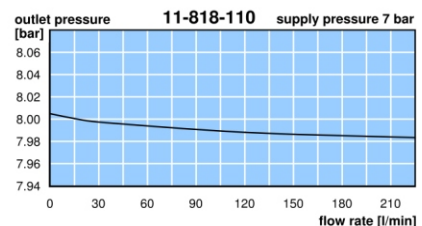
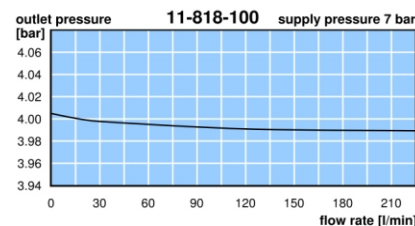
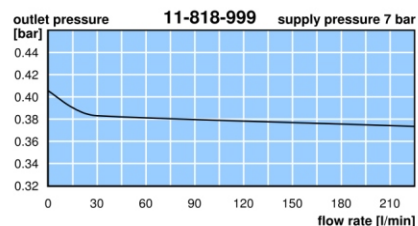
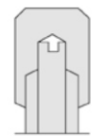
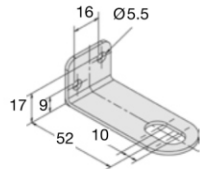
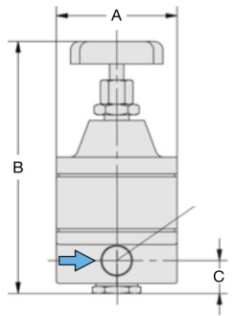
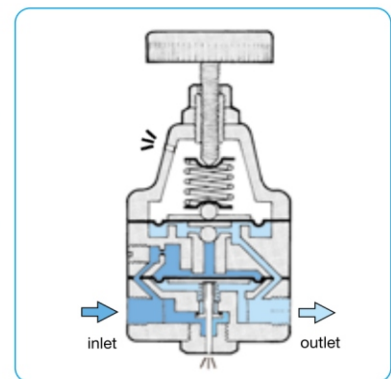


Special options, add the appropriate letter

tamper-proof cap made of brass, adjustment by screwdriver, total height 108 mm 11-818-...T

Accessories, enclosed

pressure gauge Ø 50 mm, 0...*2 bar, G¼ **MA5002-..*2**
mounting bracket made of steel, mounting nut at the device **BW12-01**
mounting nut for metal sheet thickness from 2.5 up to 6 mm **3081-01**



*1 at 7 bar supply pressure and 1.4 bar outlet pressure

*2 01 = 0...1 bar, 04 = 0...4 bar, 10 = 0...10 bar

