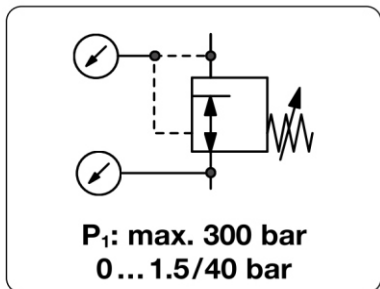


RH300 - Manodétendeur simple ou double étage pour gaz en bouteille, compatible avec de nombreux gaz, 300 bar

Description	High pressure regulator for gas cylinders for reducing pressure of compressed air or liquid gases from a high level to the required pressure.
Supply pressure	max. 300 bar
Media	compressed air, oxygen or different gases according to DIN 477 (Part 5)
Connections	according to DIN 477 (Part 5)
Adjustment	by T-handle
Gauge port	All regulators are equipped with both one supply pressure gauge and one outlet pressure gauge.
Leakage rate	10 ⁻⁶ mbar l/s
Compensation	All regulators are equipped with supply pressure variation compensation, so that a change in supply pressure has no effect on the outlet pressure's stability.
Temperature range	-30 °C to 60 °C / -22 °F to 140 °F
Material	Body: brass O-rings: NBR/Buna-N and EPDM Spring cage: brass Diaphragm: 65NBR4550, PTFE for outlet > 10 bar, stainless steel for pure gases up to 5.0



Dimensions			Version	Flow rate	Supply pressure	Pressure range	Order number
A	B	C	1-step	m ³ /h*2	max. bar	bar	
mm	mm	mm	2-step	l/min*2			

Cylinder pressure regulator 300 bar							for compressed air, connections DIN 477, with inlet / outlet gauges	RH300
210	190	100	1-step	48	800	300	0 ... 10	RH301-00C
210	210	120		75	1250		0 ... 20	RH301-00D
				120	2000		0 ... 40	RH301-00E
240	190	100	2-step	8	133	300	0 ... 1,5	RH302-00A
				48	800		0 ... 10	RH302-00C



RH301, 1-step

Special options, change the appropriate letter

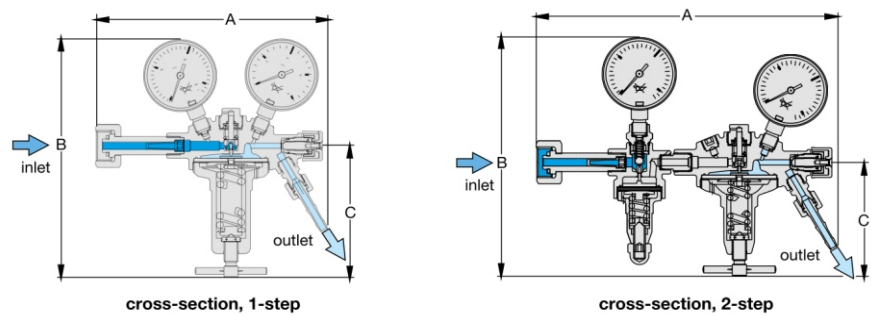
compressed air	connection gauge G ⁵ / ₈	RH35 -... .
carbon dioxide	CO ₂	RH30 -... .03
inert gas		RH30 -... .04
argon	Ar	RH30 -... .05
fuel gas		RH30 -... .06
nitrogen	N ₂	RH30 -... .07
forming gas		RH30 -... .08
helium	He	RH30 -... .09
hydrogen	H ₂	RH30 -... .11
testing gas		RH30 -... .12
oxygen	O ₂	RH30 -... .15
chrome-plated body	inside and outside	1-step RH301 -C... .
chrome-plated body	inside and outside	2-step RH302 -C... .
metal diaphragm	5.0 purity	1-step RH301 -M... .
		2-step RH302 -M... .



RH302, 2-step

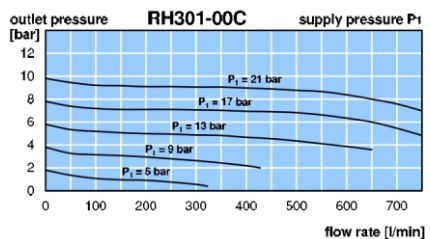


RH301-C..., chrome-plated



connection thread up to 300 bar		
gas type	inlet *1	outlet
fuel gas	W30x2 LH	G ³ / ₄ LH
all others	W30x2	G ³ / ₄

flow rate - correction factor	
gas type	factor
compressed air	1.00
oxygen	O ₂ 0.95
carbon dioxide	CO ₂ 0.81
hydrogen	H ₂ 3.80
argon	Ar 0.85
helium	He 2.70
propane	C ₃ H ₈ 0.80
nitrous oxide	N ₂ O 0.80



*1 Thread according to DIN 477, Only left hand thread is marked LH. Right hand RH is not marked.
*2 at supply pressure of 2x outlet pressure + 1 bar

