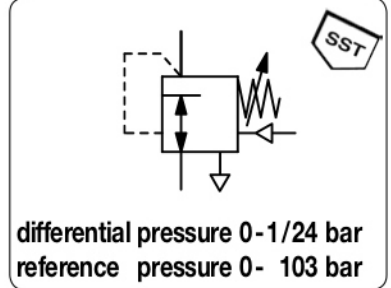


# RH44S - Régulateur différentiel de pression, en acier inoxydable, à très haute pression d'entrée, pour air comprimé et gaz

|                          |   |                                     |
|--------------------------|---|-------------------------------------|
| <b>Description</b>       | The dome loaded, spring biased regulator is designed for pressure tracking applications to maintain a constant differential pressure. Venting allows for pressure tracking increases and decreases. |                                     |
| <b>Media</b>             | compressed air or gases (depending on selected materials)   |                                     |
| <b>Supply pressure</b>   | max. 414 bar  | <b>Outlet pressure</b> max. 103 bar |
| <b>Exhaust</b>           | tapped exhaust 1/4" NPT   | <b>Control port</b> 1/8" NPT        |
| <b>Adjustment</b>        | hexagonal screw for spring tension  | <b>Leakage</b> bubble-tight         |
| <b>Gauge port</b>        | not available   | <b>Mounting position</b> any        |
| <b>Temperature range</b> | -26 °C to 74 °C / -14 °F to 165 °F  |                                     |
| <b>Material</b>          | Body: stainless steel 302   |                                     |
|                          | Valve seat and gasket: CTFE, Vespel   |                                     |
|                          | O-Rings: NBR/Buna-N   |                                     |



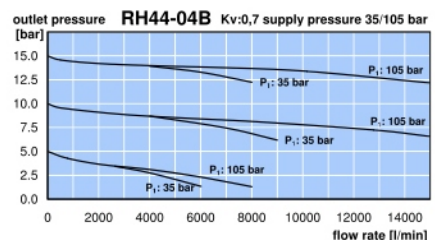
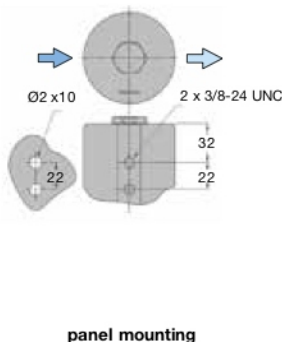
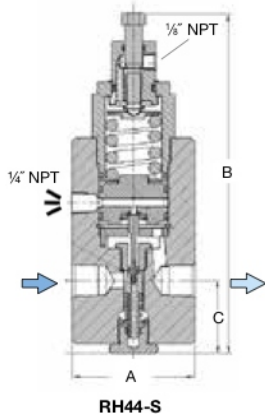
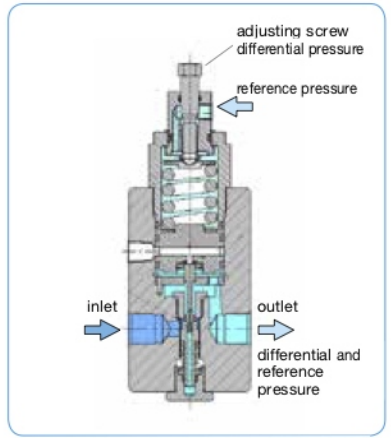
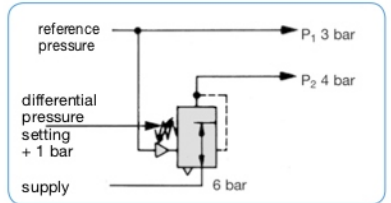
| Dimensions |   |   | K <sub>v</sub> -value<br>(m <sup>3</sup> /h) | Flow rate<br>l/min*1 | Connection<br>thread<br>NPT | Differential<br>pressure range<br>bar | Order<br>number |
|------------|---|---|--|----------------------|-----------------------------|---------------------------------------|-----------------|
| A          | B | C |  |                      |                             |                                       |                 |

| Differential pressure regulator   |     |    |     |       |          |  |  |
|---|-----|----|-----|-------|----------|--|--|
| P <sub>1</sub> max: 414 bar, P <sub>A</sub> max: 103 bar, SST 302 relieving, P <sub>a</sub> : 0 ... 103 bar, Viton / CTFE |     |    |     |       |          |  |  |
| 76  | 212 | 46 | 0.7 | 10000 | 1/2" NPT | 0 ... 1<br>0 ... 7<br>0 ... 14<br>0 ... 24 | <b>RH44-04AS</b><br><b>RH44-04BS</b><br><b>RH44-04CS</b><br><b>RH44-04DS</b> |
| 76  | 212 | 46 | 2.0 | 21000 | 3/4" NPT | 0 ... 1<br>0 ... 7<br>0 ... 14<br>0 ... 24 | <b>RH44-06AS</b><br><b>RH44-06BS</b><br><b>RH44-06CS</b><br><b>RH44-06DS</b> |



## Special options, add the appropriate letter

brass body (s. page 4.22) RH44-0. .



\*1 at P<sub>1</sub> = 105 bar, P<sub>2</sub> = 15 bar and Δp = 1 bar