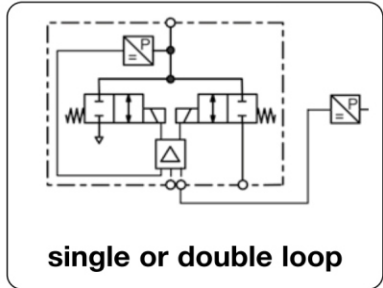


PQH - Instrumentation, régulation de pression d'air ou de gaz, à commande proportionnelle, simple ou double boucle de régulation

Description	Proportional pressure regulator with closed loop control technology for better control of pressurised gases. The instrument can be built as single closed loop or dual closed loop control valve. dry, lubricated or unlubricated and 20 µm filtered compressed air or non-corrosive gases constant outlet pressure at voltage drop	
Media	dry, lubricated or unlubricated and 20 µm filtered compressed air or non-corrosive gases	
Fail freeze	ratio of internal to external relationship is 10% to 90%	
Second loop	0-10 V, impedance 4.7 kΩ,	with reverse voltage protection
Supply voltage	15-24 V DC, residual ripple < 10%,	
Impedance	0-10 V / 10 kΩ, 4-20 mA / 100 Ω	
Protection class	IP65	
Electrical connector	M12, 6-pin	
Power consumption	24 W (985 mA) regulating, 2.4 W (100 mA) non-regulating	
Linearity/Hysteresis	< 0.5% FS	Repeatability < 0.5% FS
Adjustment	zero, span, hysteresis	
Temperature range	0 °C to 70 °C / 32 °F to 158 °F	Mounting position any, vibration-resistant
Material	Ports: brass Transducer: silicon	Elastomer: FKM Valves: stainless steel



Dimensions			K _v -value	Flow rate	Supply pressure	Accuracy	Connection thread	Pressure range	Order number
A	B	C							
mm	mm	mm	(m ³ /h)	l/min*1	max. bar	%	G	bar	

Proportional pressure regulator									0-10 V input and monitor signal, w. coupling socket supply voltage 24 V DC, single loop	PQH1
76	122	15	0.016	280	75	0.5	G ¹ / ₂	0...40		PQH1EE-40
								0...50		PQH1EE-50
								0...60		PQH1EE-60
								0...70		PQH1EE-70

Proportional pressure regulator									0-10 V input, monitor- and feedback signal, with coupling socket, supply volt. 24 V DC, double loop	PQH2
76	122	15	0.016	280	75	0.5	G ¹ / ₂	0...40		PQH2EE-40
								0...50		PQH2EE-50
								0...60		PQH2EE-60
								0...70		PQH2EE-70



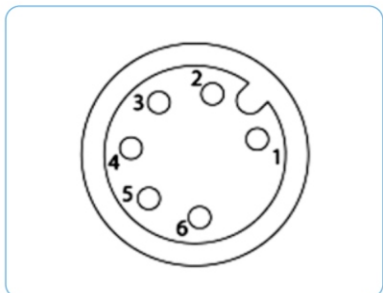
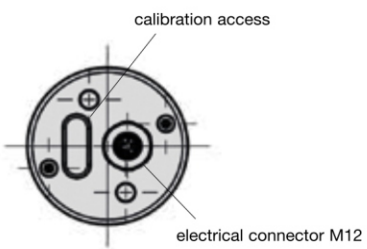
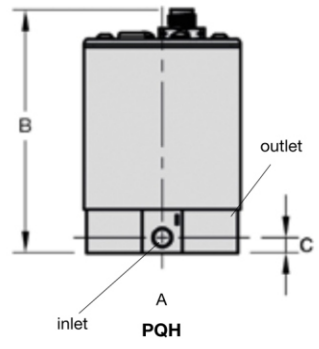
Special options, add the appropriate letter or number		
4-20 mA	input and feedback signal	PQH . IC- ..
for oxygen		PQH . . . - .15
stainless steel manifold		PQH . . . - .SS

Pneumatic connections

I: inlet
O: outlet
E: exhaust

LED status

LED red: supply voltage
LED green: setpoint/input value equal



Pin	Description
1	TTL output
2	set point +
3	set point ground
4	supply 24V DC
5	supply earth
6	analogue output signal

connection plan

*1 at 70 bar supply pressure and open outlet

