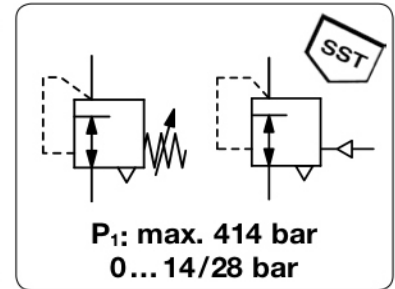


RH4 - Régulateur haute pression, corps en laiton ou acier inoxydable 316, également proposé en version pilotée, booster

Description	High pressure regulator with balanced valve design ensuring stable downstream pressure. Excellent for low pressure.		
Media	compressed air, non-corrosive gases or liquids		
Supply pressure	max. 414 bar		
Exhaust	for compressed air or gases: ¼" NPT tapped exhaust for inlet and outlet		
Leakage	bubble-tight		
Adjustment	by black plastic knob, optionally pneumatical control through diaphragm or piston		
Relieving function	for compressed air or gases: relieving for liquids: non-relieving		
Gauge port	non, optionally ¼" NPT for inlet and outlet		
Mounting position	any		
Temperature range	-26 °C to 74 °C / -15 °F to 165 °F		
Weight	2.2 kg		
Material	Body: brass, optionally 316 stainless steel	O-rings: NBR/Buna-N, on request FKM, Kalrez, E.P.	
	Main valve seat: Vespel SP21	Relieving valve: Vespel SP21	
	Inner valve: Monel, stainless steel	Filter: bronze, 40 µm, only for liquids	



Dimensions			K _v -value	Flow rate		Connection thread	Pressure range	Order number
A	B	C		(m ³ /h)	m ³ /h*1			

High pressure regulator 414 bar			brass body, Vespel SP21, NBR/Buna-N relieving, without gauge port				RH4	
76	159	19	0.3	510	8500	¾" NPT	0... 14	RH4-03A
							0... 28	RH4-03B
						½" NPT	0... 14	RH4-04A
							0... 28	RH4-04B



RH4-...S

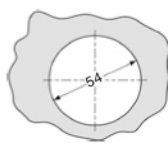
Special options, add the appropriate letter

booster version	½" NPT, 0...41 bar, brass, diaphragm control, P _{SL} = 5.8 bar		RH4- 04J1
	piston control		RH4- 04J2
non-relieving	without relieving function		RH4- 0. .K
stainless steel body			RH4- 0. .S
gauge port	¼" NPT for inlet and outlet		RH4- 0. .M
brass pressure gauge	inlet side HM	outlet side	RH4- 0. .MGM
SST pressure gauge	inlet side H	outlet side	RH4- 0. .MG

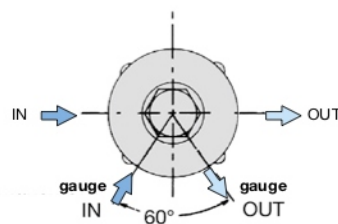
Accessories, enclosed

mounting nut for panel mounting

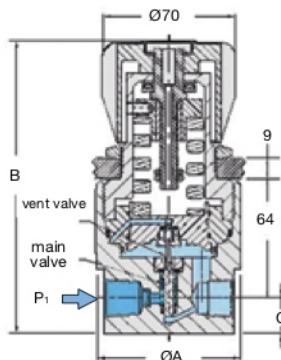
62634



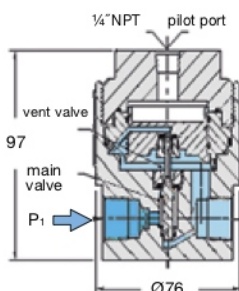
panel cut-out



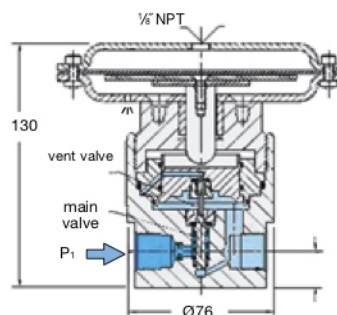
gauge port, option "M"



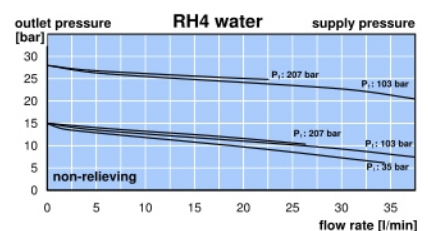
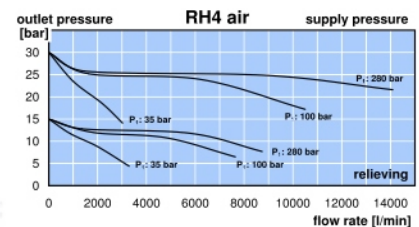
pressure regulator RH4



booster RH4-J2



booster RH4-J1



*1 at 280 bar supply pressure and 14 bar outlet pressure