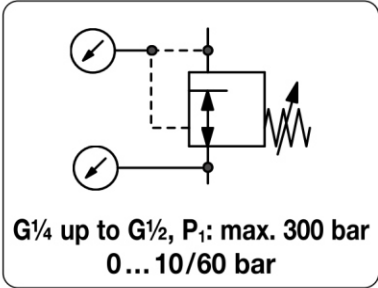


RH - Régulateur haute pression, avec filtre incorporé, taraudé G1/2", 300 bar, compatible avec de nombreux gaz, option chromage interne et externe

Description	Main pressure regulator according to ISO 7291 up to 300 bar with G½ connection thread. A filter at the inlet port protects against contamination.
Media	compressed air, oxygen or different gases on request
Supply pressure	see chart, max. 300 bar
Connections	G¼ to G½
Adjustment	by T-handle for RH-...7.510 / 520 / 525 by hexagonal spindle (spanner size 20 mm) for RH-...7.545 / 565
Gauge port	All regulators are equipped with both one supply pressure gauge and one outlet pressure gauge.
Leakage rate	10 ⁻⁶ mbar l/s
Compensation	without supply pressure variation compensation
Temperature range	-30 °C to 60 °C / -22 °F to 140 °F
Material	Body: brass O-rings: NBR/Buna-N Spring cage: brass Diaphragm: 65NBR4550, stainless steel for oxygen > 20 bar



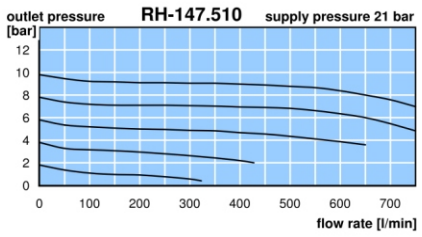
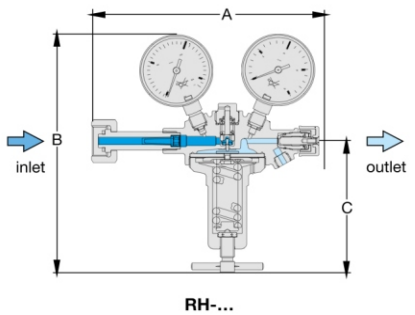
Dimensions			Flow rate		Supply pressure	Connection thread	Pressure range	Order number
A	B	C	m³/h*1	l/min*1	max. bar	G	bar	

Main pressure regulator					for compressed air, supply and outlet pressure gauge supplied			RH
150	205	115	50	830	100	G½	0... 10	RH-147.510
			75	1250			0... 20	RH-147.520
			170	2830			0... 20	RH-147.525
			290	4830			15... 40	RH-147.545
450	7500	15... 60	RH-147.565					
		15... 60	RH-147.565					
150	205	115	50	830	200	G½	0... 10	RH-247.510
			75	1250			0... 20	RH-247.520
			170	2830			0... 20	RH-247.525
			290	4830			15... 40	RH-247.545
450	7500	15... 60	RH-247.565					
		15... 60	RH-247.565					
150	205	115	50	830	300	G½	0... 10	RH-347.510
			75	1250			0... 20	RH-347.520
			170	2830			0... 20	RH-347.525
			290	4830			15... 40	RH-347.545
450	7500	15... 60	RH-347.565					
		15... 60	RH-347.565					



Special options, add the appropriate letter

G¼	connection thread, max. 100 bar	RH-. 27... .	
G¾	connection thread	RH-. 37... .	
metal diaphragm	5.0 purity	RH-. .7... .M	
carbon dioxide	CO ₂	RH-. .7... .03	
inert gas		RH-. .7... .04	
argon	Ar	RH-. .7... .05	
fuel gas		up to 40 bar	RH-. .7... .06
nitrogen	N ₂	up to 40 bar	RH-. .7... .07
forming gas		up to 40 bar	RH-. .7... .08
helium	He	RH-. .7... .09	
hydrogen	H ₂	RH-. .7... .11	
testing gas		up to 40 bar	RH-. .7... .12
methane	CH ₄	RH-. .7... .13M	
natural gas *2		RH-. .7... .14	
oxygen	O ₂	up to 20 bar	RH-. .7... .15
chrome plated body	inside and outside	RH-. .7... .C	



*1 at supply pressure of 2 x outlet pressure + 1 bar

*2 without DVGW-approval

