

**Distributeurs pneumatiques à commande musculaire à levier positionné à 90°
Série AIRCOMP 120 VM - Corps Technopolymère - Raccordement 1/8"**

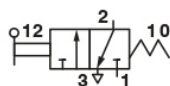
Fonction 3/2 - Raccordement 1/8"

CARACTERISTIQUES TECHNIQUES

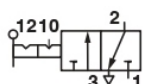
Pression d'exercice : 0 ÷ 10 bar
Débit de référence (P = 6 bar - Δp = 1 bar) : 490 NI/min
Poids : 0,091Kg



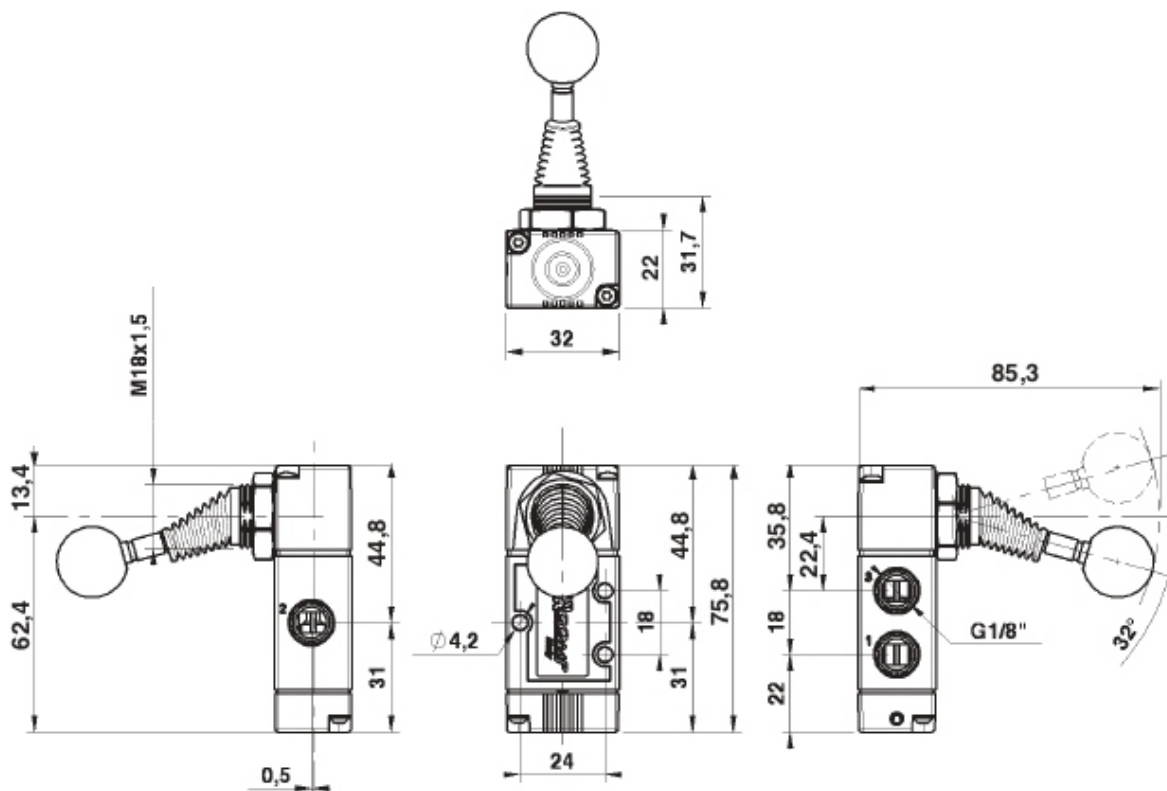
Code Désignation



Rappel ressort
1202323006 VM 1/8" 22 3 L9 ML NC P



Cranté 2 positions
1202323007 VM 1/8" 22 3 L9 BS 00 P



Distributeurs pneumatiques à commande musculaire à levier positionné à 90° Série AIRCOMP 120 VM - Corps Technopolymère - Raccordement 1/8"

Fonctions 5/2 et 5/3 - Raccordement 1/8"

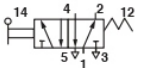
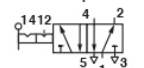
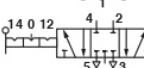
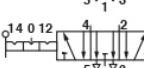

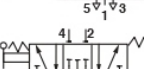
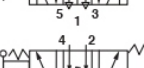
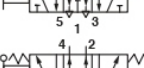
CARACTERISTIQUES TECHNIQUES

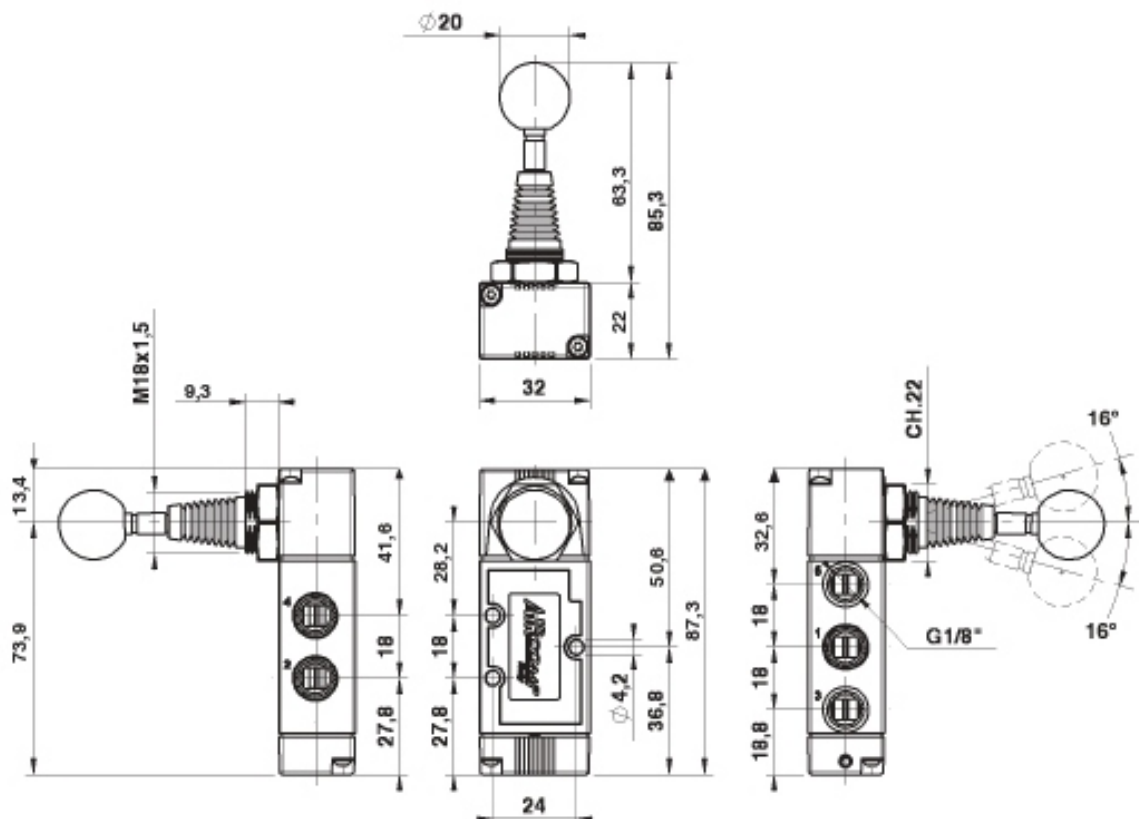
Pression d'exercice : 0 ÷ 10 bar

Débit de référence (P = 6 bar - Δp = 1 bar) : 490 NI/min

Poids : 0,101 Kg



Code	Désignation
	Rappel ressort 1202325005 VM 1/8" 22 5 L9 ML 00 P
	Cranté 2 positions 1202325006 VM 1/8" 22 5 L9 BS 00 P
	Cranté 3 positions - Centre fermé 1202326007 VM 1/8" 22 6 L9 ST CC P
	Cranté 3 positions - Centre ouvert 1202326008 VM 1/8" 22 6 L9 ST CA P
	Cranté 3 positions - Centre pression 1202326009 VM 1/8" 22 6 L9 ST CP P
	Rappel ressort - 3 positions - Centre fermé 1202326010 VM 1/8" 22 6 L9 RC CC P
	Rappel ressort - 3 positions - Centre ouvert 1202326011 VM 1/8" 22 6 L9 RC CA P
	Rappel ressort - 3 positions - Centre pression 1202326012 VM 1/8" 22 6 L9 RC CP P



Distributeurs pneumatiques à commande musculaire à levier positionné à 90° Série AIRCOMP 125 VMR - Corps Technopolymère - Raccordement 1/4"

Fonctions 5/2 et 5/3 - Raccordement 1/4"

CARACTERISTIQUES TECHNIQUES

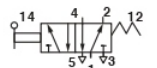
Pression d'exercice : 0 ÷ 10 bar

Débit de référence (P = 6 bar - Δp = 1 bar) : 800 NI/min

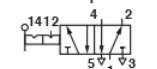
Poids : 0,121Kg



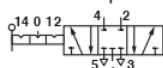
Code	Désignation
------	-------------



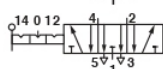
Rappel ressort
1252335005 VMR 1/4" 22 5 L9 ML 00 P



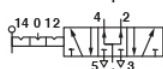
Cranté 2 positions
1252335006 VMR 1/4" 22 5 L9 BS 00 P



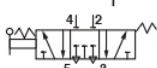
Cranté 3 positions - Centre fermé
1252336007 VMR 1/4" 22 6 L9 ST CC P



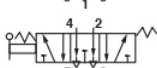
Cranté 3 positions - Centre ouvert
1252336008 VMR 1/4" 22 6 L9 ST CA P



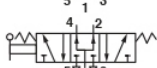
Cranté 3 positions - Centre pression
1252336009 VMR 1/4" 22 6 L9 ST CP P



Rappel ressort - 3 positions - Centre fermé
1252336010 VMR 1/4" 22 6 L9 RC CC P



Rappel ressort - 3 positions - Centre ouvert
1252336011 VMR 1/4" 22 6 L9 RC CA P



Rappel ressort - 3 positions - Centre pression
1252336012 VMR 1/4" 22 6 L9 RC CP P

