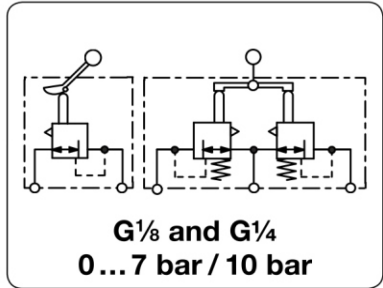


RN - Régulateur de pression à commande manuelle proportionnelle rotative ou par levier manipulateur à joystick

| | | |
|---------------------------|--|---|
| Description | Lever mechanism allows the diaphragm regulator to operate as a proportional converter with pneumatic outlet signal. Moving the lever by 141° (RN1) or 32° (RN2) allows full-range adjustment of regulated pressure, e.g. from 0 to 7 bar. compressed air or non-corrosive gases | |
| Media | RN1 | RN2 |
| Supply pressure | max. 16 bar | max. 10 bar |
| Adjustment | by side lever 0...141° angle range without spring reset | by vertical lever 2x 0...32° angle range to each side with spring reset in centre position relieving |
| Relieving function | relieving | relieving |
| Gauge port | G $\frac{1}{8}$ on both sides of the body, screw plugs supplied | |
| Mounting position | any | |
| Temperature range | -40 °C to 80 °C / -40 °F to 176 °F | -20 °C to 70 °C / -4 °F to 158 °F |
| Material | Body: nickel-plated brass Elastomer: NBR/Buna-N | Body: anodized aluminium Elastomer: NBR/Buna-N |

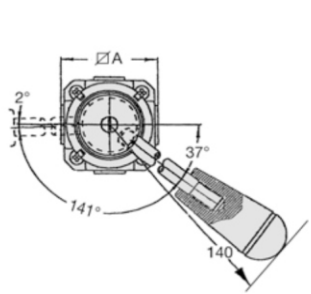


| Dimensions | | | Description | Flow rate | Connection thread | Pressure range | Order number |
|------------|----|----|-------------|-------------|-------------------|----------------|--------------|
| A | B | C | | | | | |
| mm | mm | mm | | m 3 /h*1 | l/min | G | bar |

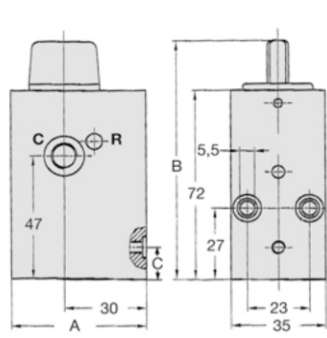
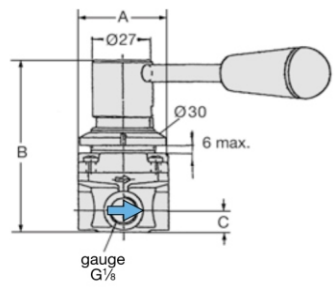
| Regulator with side lever | | | | | supply pressure max. 16 bar, relieving, brass | | RN1 | |
|---------------------------|----|----|----------------------|----|---|-----------------|------------|----------------|
| 45 | 81 | 10 | without spring reset | 18 | 300 | G $\frac{1}{4}$ | 0... 10 | RN1-02D |

| Regulator with vertical lever | | | | | supply pressure max. 10 bar, relieving, aluminium | | RN2 | |
|-------------------------------|-----|----|-----------------|----|---|-----------------|------------|------------------|
| 70 | 205 | 12 | spring-centered | 12 | 200 | G $\frac{1}{8}$ | 0... 7 | RN2-01ZC |
| | | | centre-engaging | | | | 0... 7 | RN2-01RC |
| 50 | 91 | 12 | on/off switch | | | | max. 20 | RN2-01EIN |

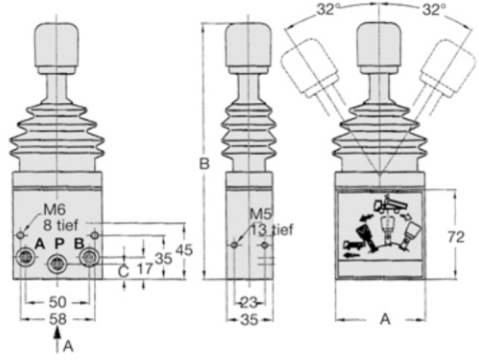
Special options, add the appropriate letter
for oxygen specially cleaned, with oxygen grease for RN1 RN1-02 . 15



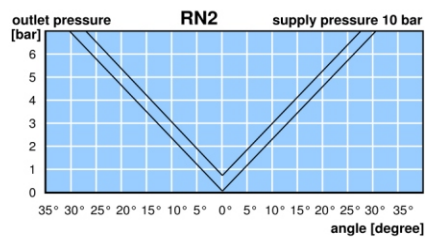
RN1



RN2-01EIN



RN2-01.C



*1 at 7 bar supply pressure and 6 bar outlet pressure

