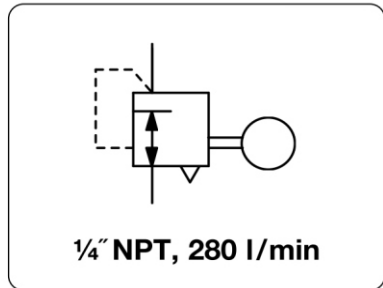


P180 - Régulateur de pression, proportionnel, motorisé, de grande précision

Description	Motorised air pressure regulator designed for precise pneumatic control using an electrical signal from a remote location. A slip clutch prevents from motor damages at overload or end position limitations.		
Media	dry, oil-free and 5 µm filtered compressed air or non-corrosive		
Operation	With no electrical power the regulator maintains a precise setpoint despite variable supply pressure and flow rates. When power is applied to the motor the pressure outlet changes.		
Power consumption	6 W		
Control signal	24 V DC		
Electrical connector	4 single wires, optionally plug according to DIN 43650A, contact gap 18 mm, 3-pin with coupling socket		
Accuracy	at varying supply pressures: < 1 mbar pressure deviation < 1% of volume flow		
Air consumption	max. 2.3 l/min, subject to outlet pressure, relieving		
Relieving function	relieving		
Relief capacity	140 l/min at 1.5 bar outlet and 0.35 bar overpressure above setpoint.		
Gauge port	¼"NPT on both sides of the body		
Material	Body: zinc die-cast Inner valve: stainless steel and brass		
Mounting position	any, preferably upright optionally 280 l/min		
Temperature range	-18 °C to 60 °C / 0 °F to 140 °F		
Elastomer	NBR/Buna-N		
Mounting bracket	black-coated steel		



Dimensions			Power	Flow	Switching	Connection	Pressure	Order
A	B	C	consumption	rate	time	thread	range	number
mm	mm	mm	W	l/min*1	s	NPT	bar	

Motorised pressure regulator								P ₁ , max. 10 bar, relieving, with constant bleed, control signal 24 V AC, 6 rpm	P180
62	195	14	6	280	40	¼"NPT	0.14...1.8		P180-02AV
					30		0.14...4.0		P180-02BV
					50		0.14...8.0		P180-02CV



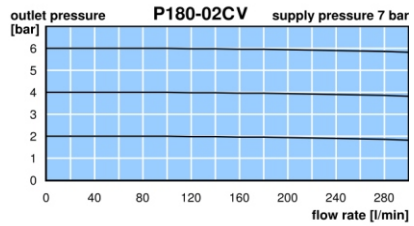
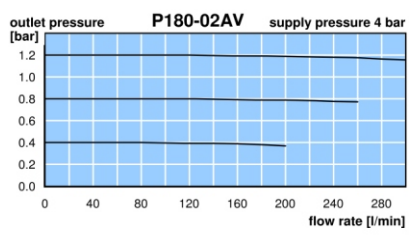
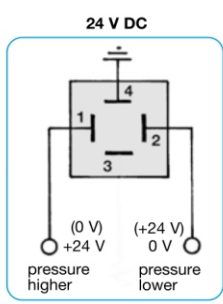
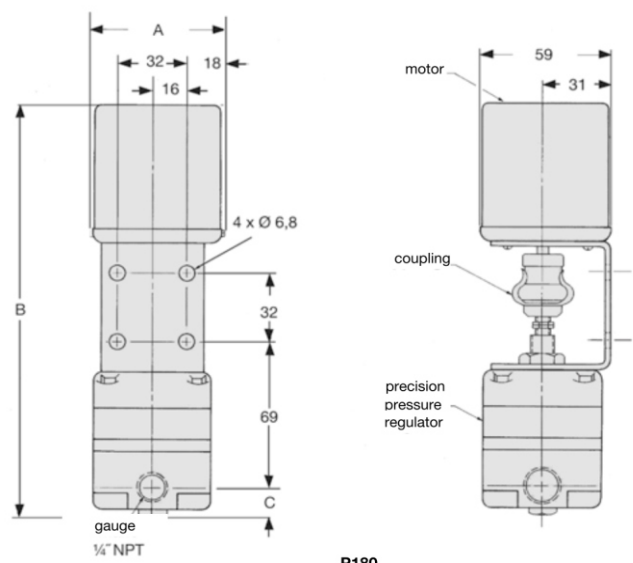
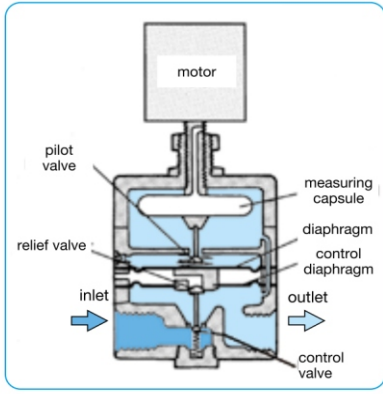
P180

Special options, add the appropriate letter

higher exhaust	two times greater than standard	P180-02.H
DIN connector	connection with DIN plug 30x30 mm	P180-02.D

Accessories, enclosed

pressure gauge	Ø 50 mm, 0...*2 bar, G¼, connecting parts necessary	MA5002-...*2
gauge connecting parts	adapter ¼"NPT - R¼f	VP-0202N



*1 at 7 bar supply pressure and 6 bar outlet pressure
*2 02 = 0...2,5 bar, 06 = 0...6 bar, 10 = 0...10 bar

