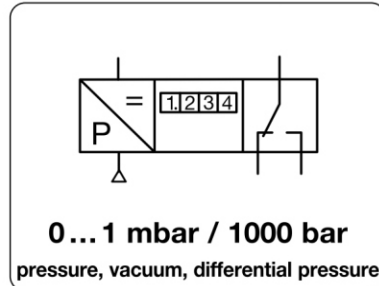


# MKA - Manomètre numérique, à sonde de pression intérieure ou extérieure, à montage en tableau

<b>Description</b>	Suitable for measurement of positive pressure, vacuum or differential pressure.	
<b>Media</b>	compressed air or non-corrosive gases	<b>Overpressure</b> see chart
<b>Supply voltage</b>	15...30 V DC standard, optionally 230 V AC $\pm 10\%$	
<b>Electrical connector</b>	plug with 7-pin screw terminal for cable cross-sectional area 0.14...1.5 mm <sup>2</sup>	
<b>Pneumatic connection</b>	<b>P+</b> : pos. pressure <b>P-</b> : vacuum <b>P+/-</b> : differential pressure, the higher pressure is to be connected at P+ plug nipple up to 1 bar, sleeve with union nut from 2 bar on, each for hose internal diameter of $\varnothing 4$ mm	
<b>Display</b>	3½-digit LCD display, max. $\pm 1999$ , 14 mm tall, black numbers	
<b>Output signal</b>	red LED lights up at overpressure, then measurement is faulty	
<b>Linearity</b>	0...10 V, impedance > 10 k $\Omega$ , optionally 4...20 mA, impedance < 500 $\Omega$	<b>Hysteresis</b> < 0.1% FS
<b>Long-term stability</b>	< 0.1% FS per year at > 25 mbar, < 1% FS per year at > 5 mbar, < 2% FS per year at < 5 mbar range	<b>Repeatability</b> see chart
<b>Temperature sensitivity</b>	see chart, at 0 °C to 50 °C / 32 °F to 122 °F	<b>Resolution</b> 1 digit
<b>Response time</b>	100 ms	<b>Protection class</b> IP 54
<b>Temperature range</b>	-20 °C to 50 °C / -4 °F to 122 °F	
<b>Material</b>	Housing: aluminium	

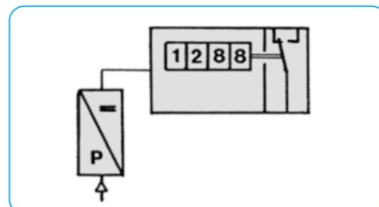


Repeatability	Temperature error	Linearity error	Over-pressure	Measurement range	Order number
% FS	% FS	% FS	max. bar	mbar/bar	

Digital gauge	for compressed air, measurement of positive pressure, vacuum and differential pressure, 24 V DC, outlet signal 0...10 V, 3½-digit display				MKA
1.0	4.0	1.0	0.25	0... 1 mbar	MKA-A1
0.3	2.5	0.8	0.25	0... 2.5 mbar	MKA-A2
0.3	1.2	0.8	0.25	0... 5 mbar	MKA-A5
0.2	1.0	0.8	0.25	0... 10 mbar	MKA-B1
0.1	1.0	0.7	0.35	0... 20 mbar	MKA-B2
0.1	1.0	0.7	0.35	0... 50 mbar	MKA-B5
0.1	1.0	0.5	0.35	0... 100 mbar	MKA-C1
0.1	1.0	0.5	0.75	0... 200 mbar	MKA-C2
0.1	1.0	0.5	1.5	0... 500 mbar	MKA-C5
0.1	1.0	0.5	3.0	-1... 1 bar	MKA-V1
0.1	1.0	0.5	3.0	0... 1 bar	MKA-01
0.1	1.0	0.5	4.0	0... 2 bar	MKA-02
0.1	2.0	0.5	10	0... 8 bar	MKA-08
0.1	2.0	0.5	12	0... 10 bar	MKA-10
0.1	2.3 mbar	1 mbar	3.3	0.7... 1.1 bar <sub>abs</sub>	MKA-S1

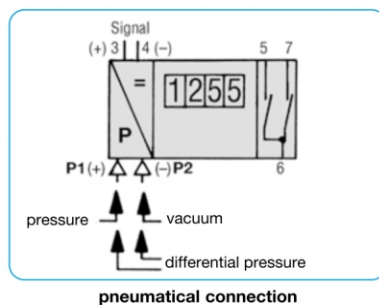
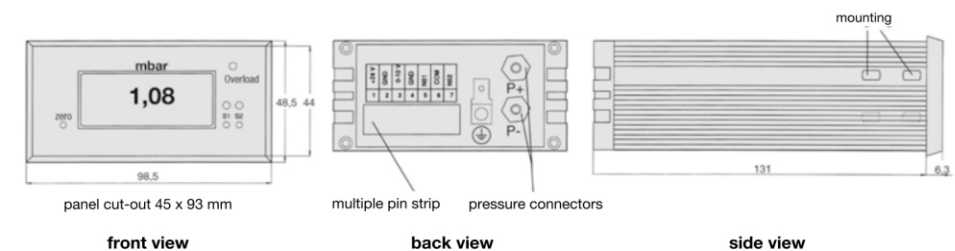
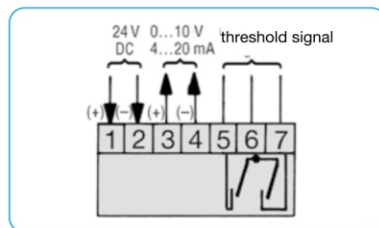


Digital gauge for external sensor	0...10 V input signal, supply voltage 24 V DC, 3½-digit display		MKA *2
96	48	137	e.g. for pressure transducer
			MKA-00



## Special options, add the appropriate letter

two limit switches	with LED display, 230 V AC, 1 A, hysteresis 2% FS	MKA-..S
linearity < 0.2% FS	from 100 mbar	MKA-..B
4...20 mA output signal	impedance < 500 $\Omega$	MKA-..A
4...20 mA input signal	internal resistance 100 $\Omega$	MKA-00A
P <sub>a</sub> indication	< 20 mbar: indication P <sub>a</sub> > 20 mbar: indication kP <sub>a</sub>	MKA-..P
230 V AC	supply voltage	MKA-..V
RS232*1	interface, 8 bit without parity	MKA-..R
deviant measurement range	to be indicated on order	MKA-XX



\*1 Handshake on/off, Baudrate 9600

\*2 indicate pressure range by order