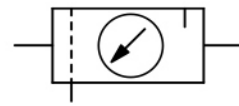


C20 - C21

C20 - C21

| | | |
|---------------------------|--|---|
| Description | "Maxi" FRL service units with pressure gauge are of modular design with exchangeable insert kits and have a high flow rate. All "maxi" instruments are easy to take out of fixed piping by simply removing the two fastening bolts on the insert kits. | |
| Media | compressed air or non-corrosive gases | |
| Supply pressure | max. 17 bar | |
| Adjustment | by plastic knob with snap-lock at C20, | by T-handle with locknut at C21 |
| Relieving function | relieving, optionally non-relieving | |
| Gauge port | G $\frac{1}{4}$ on both sides of the body | |
| Drainage | manual drain as standard, | Filter element 40 μ m, optionally 5 μ m, made of polypropylene |
| Temperature range | 0 °C to 70 °C / 32 °F to 158 °F | Bowl metal version with sight glass |
| | 0 °C to 50 °C / 32 °F to 122 °F for automatic or semiautomatic drain version | optionally automatic drain or semiautomatic drain for max. 12 bar |
| Material | Body: zinc die-cast | Spring cage: zinc die-cast |
| | Knob (C20): glass fibre-reinforced plastic | T-handle (C21): steel |
| | Bowl: zinc die-cast | Sight glass: polyurethane |
| | Elastomer: NBR/Buna-N | Inner valve: brass and plastic |



G $\frac{1}{4}$ up to G1

| Dimensions | | | Combination consisting of | Bowl design made of / with | Flow rate m ³ /h*1 | l/min*1 | Connection thread G | Order number |
|------------|---|---|---------------------------|----------------------------|-------------------------------|---------|---------------------|--------------|
| A | B | C | | | | | | |

| FRL unit, 2-part | | | | P ₁ : max. 17 bar, P ₂ : 0.3...9 bar, 40 μ m, manual drain, relieving, with pressure gauge | | | | C20 |
|------------------|-----|-----|-------|--|-----|-------|-----------------|------------|
| 178 | 289 | 175 | B+L20 | metal / sight glass | 102 | 1 700 | G $\frac{1}{4}$ | C20-02BL-W |
| | | | | | 174 | 2 900 | G $\frac{3}{8}$ | C20-03BL-W |
| | | | | | 276 | 4 600 | G $\frac{1}{2}$ | C20-04BL-W |
| 203 | 289 | 175 | B+L20 | metal / sight glass | 390 | 6 500 | G $\frac{3}{4}$ | C20-06BL-W |
| | | | | | 402 | 6 700 | G1 | C20-08BL-W |

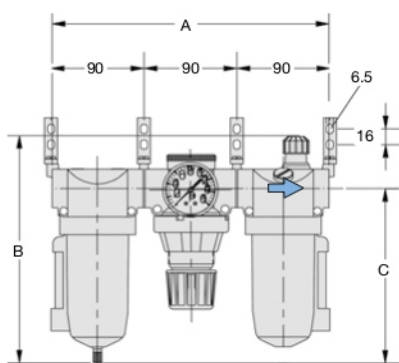
| FRL unit, 3-part | | | | P ₁ : max. 17 bar, P ₂ : 0.3...9 bar, 40 μ m, manual drain, relieving, with pressure gauge | | | | C20 |
|------------------|-----|-----|---------|--|-----|-------|-----------------|-------------|
| 270 | 226 | 171 | F+R+L20 | metal / sight glass | 102 | 1 700 | G $\frac{1}{4}$ | C20-02FRL-W |
| | | | | | 174 | 2 900 | G $\frac{3}{8}$ | C20-03FRL-W |
| | | | | | 276 | 4 600 | G $\frac{1}{2}$ | C20-04FRL-W |
| 292 | 226 | 171 | F+R+L20 | metal / sight glass | 390 | 6 500 | G $\frac{3}{4}$ | C20-06FRL-W |
| | | | | | 402 | 6 700 | G1 | C20-08FRL-W |

Special options, add the appropriate letter

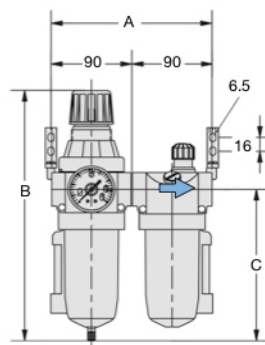
| | | |
|-----------------------------|----------------------|-----------------|
| T-handle | including locknut | C21-0 . . . -W |
| 5 μ m filter element | | C20-0 . . . -WG |
| NPT | connection thread | C20-0 . . . -WN |
| 0.2... 4 bar pressure range | | C20-0 . . . -WB |
| 0.5...17 bar pressure range | | C20-0 . . . -WD |
| semiautomatic drain | RK500SY, max. 12 bar | C20-0 . . . -WM |
| automatic drain | SA605MD, max. 12 bar | C20-0 . . . -WR |

Accessories, enclosed

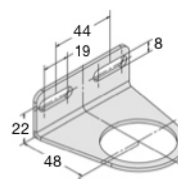
| | | |
|----------------------|---|-----------|
| mounting bracket | mounting at the spring cage | BW45-02 |
| mounting nut | made of aluminium | M45x1,5A |
| mounting bracket set | made of steel, consisting of two mounting brackets | MK20-0100 |
| porting block | tap G $\frac{1}{4}$, for unlubricated compressed air | IK20CP |



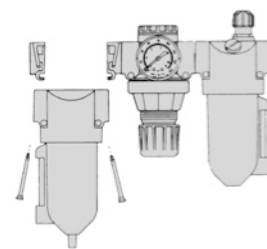
C20- . . FRL mit MK20-0100



C20- . . BL mit MK20-0100



BW45-02



dismantling from fixed piping

*1 at 8 bar supply pressure, 6 bar outlet pressure and 1 bar pressure drop



C20-06BL



C20-06FRL



IK20CP

IK20V