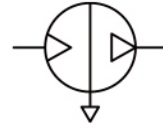


AM - Amplificateur de pression d'air comprimé

AM

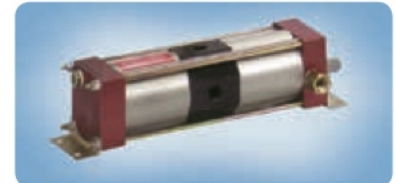
Description	The air amplifier compresses air or nitrogen from a standard pressure of 10 bar max. to the desired outlet pressure of 60 bar max. This is realised by cylinders with different ratios - simple, safe and economical. No electrical installation is required and there is no energy consumption once the final pressure has been reached. Service life 3 million cycles, full load operation 12 min max. per hour.		
Media	lubricated, unlubricated and 50 µm filtered compressed air or nitrogen		
Mounting position	any		
Power device	Cylinder with integrated reversing valve, check valve and silencer. The pressure will be increased selective to the consumer. No energy consumption once final pressure is attained.		
Drive pressure P_A	system air to drive the air amplifier, 2...10 bar		
Supply pressure P₁	max. 12 bar, for instance nitrogen or compressed air		
Outlet pressure P₂	amplified outlet or operating pressure of 20 bar to 100 bar maximum		
Continuous operation	20% of the diagram values should maximally be realised at permanent running		
Temperature range	0 °C to 60 °C / 32 °F to 140 °F		Sound level max. 79 dB (A)
Material	Body: aluminium	Seals: NBR/Buna-N	



P₁: max. 12 bar, P₂: 100 bar
50 - 1200 l/min

Dimensions			Weight kg	Connection thread G	Transmission ratio P _A : P ₂	Flow rate l/min	P ₂ max. bar	Order number
A	B	C						

Pressure booster / Air amplifier								
supply pressure P ₁ max. 12 bar, for compressed air								
drive pressure P _A 2...10 bar								
AM								
86	343	84	3.3	G ³ / ₈	1 : 2	580 ^{*1}	20	AM20-0580
187	324	135	8.5	G ¹ / ₂	1 : 2	960 ^{*1}	20	AM20-0960
285	427	180	21	G ³ / ₄	1 : 2	1200 ^{*1}	20	AM20-1200
180	392	135	8.5	G ¹ / ₂	1 : 3	230 ^{*2}	32	AM32-0230
80	220	80	2.2	G ³ / ₈	1 : 4	50 ^{*3}	40	AM40-0050
251	471	176	16	G ³ / ₈	1 : 5	360 ^{*4}	60	AM60-0360
180	421	135	20	G ¹ / ₄	1 : 10	280 ^{*5}	100	AM100-0250



AM20-0580



AM20-0960



AM20-1200



AM32-0230



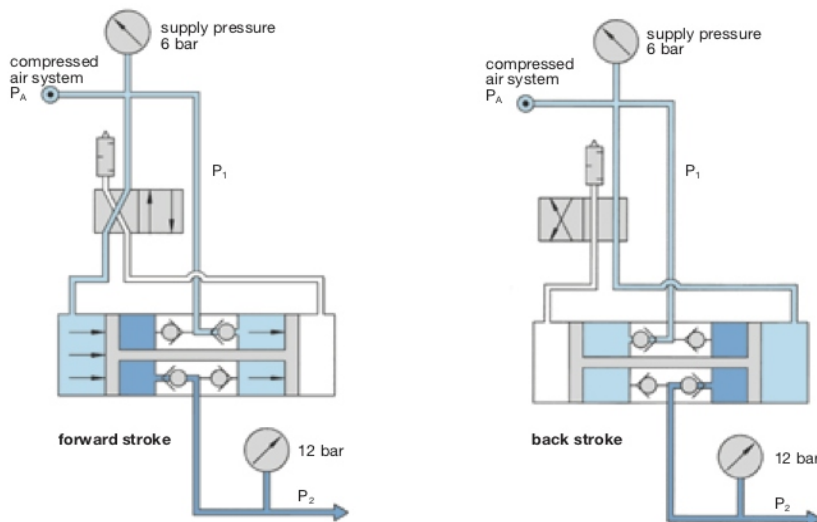
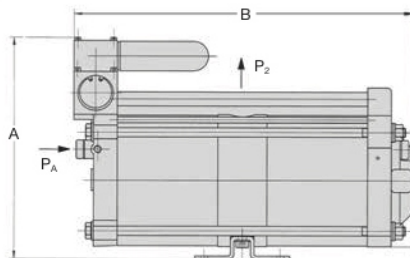
AM40-0050



AM60-0360

Special options, add the appropriate letter

unlubricated operation seals	FEC seals for dry compressed air or nitrogen	AMT
-Atex	e.g. Ex II 3G/3D IIB x, more specifications possible	AMEX
pressure booster for gas	up to max. 1500 bar outlet pressure	AM
pressure booster for liquids		AM



function principle for transmission ratio 1 : 2

*1 at 6 bar supply and 8 bar outlet pressure under full load
*2 at 8 bar supply and 20 bar outlet pressure under full load

*3 at 6 bar supply and 16 bar outlet pressure under full load
*4 at 8 bar supply and 30 bar outlet pressure under full load
*5 at 8 bar supply and 40 bar outlet pressure under full load