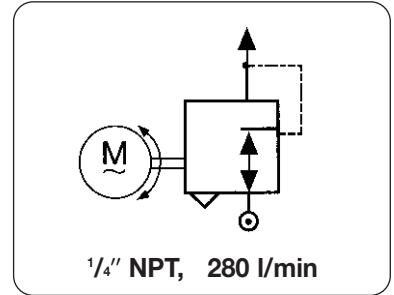


<b>Description</b>	Motorised air pressure regulator designed for precise pneumatic control using an electrical signal from a remote location. With two tandem synchronous AC motors, each with its own set of leads, direction of rotation dependent on which set of leads is supplied with power.	
<b>Operation</b>	With no electrical power, the regulator maintains a precise setpoint despite variable supply pressure and flow rates. When power is applied to the motor, the pressure outlet changes.	
<b>Media</b>	Compressed air or non-corrosive gas, filtered to 5 µm, dry, non-lubricated	
<b>Motor type</b>	6 W for 6 rpm motor as standard	4 W for 2 rpm motor
<b>Flow capacity</b>	280 l/min / 14 scfm at 7 bar / 100 psi supply and 1.4 bar / 20 psi outlet	
<b>Exhaust capacity</b>	60 l/min / 2 scfm on standard regulator 280 l/min / 10 scfm on high relief regulator	
<b>Air consumption</b>	< 3 l/min / 0.1 scfm, less than 1% of flow capacity. The lower the outlet pressure, the lower the air consumption.	
<b>Mouting position</b>	any	
<b>Gauge ports</b>	1/2" on both sides of body	
<b>Temperature range</b>	- 18 °C to 60 °C / 0 °F to 140 °F	- 30 °C to 80 °C / -22 °F to 180 °F
<b>Materials</b>	Body: zinc die-casting	Capsule: Beryllium copper
	Elastomer: NBR (Buna N)	Mounting bracket: steel, black paint finish



1/4" NPT, 280 l/min

Dimensions			Power consumption	Flow rate	Adjustment time	Pressure range	Order Number
H	B	D	W	l/min*	s	bar	
mm	mm	mm					

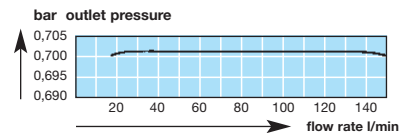
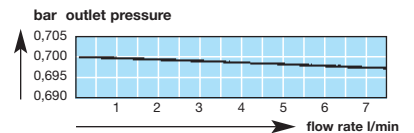
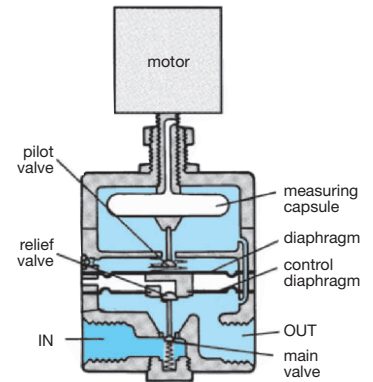
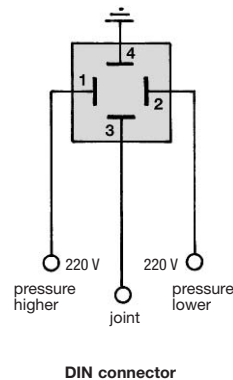
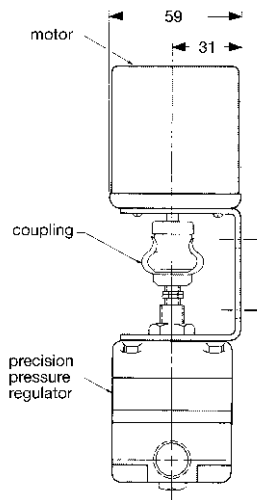
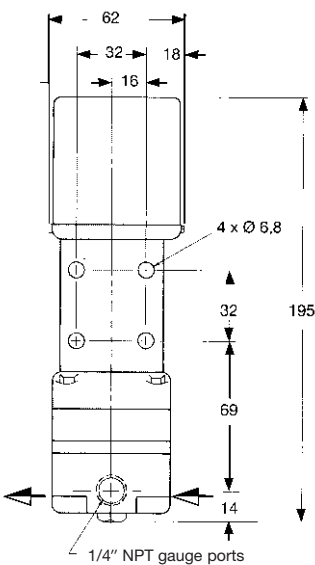
Motorised regulator	10 bar max. supply pressure, signal 220/230V AC, with leads,	1/4" NPT 6 rpm	P180				
195	62	59	6	280	40	0.14...1.8 bar*2	P180-02A
					30	0.14...4.0 bar	P180-02B
					50	0.14...8.0 bar	P180-02C



P180-02C

### Special options add the appropriate letter

Special options	Description	Accessories
24V DC	control signal	V P180-02.V
24V 50 AC	control signal	U P180-02.U
115V 50 AC	control signal	W P180-02.W
adjustment time	3 x faster than standard, 2 rpm, not for 24V	T P180-02.T
exhaust	2 x higher than standard	H P180-02.H
pressure gauge	loose, Ø 63	G P180-02.G
DIN connector	30 x 30 mm, DIN 43.650	D P180-02.D



\*1 at 7 bar supply pressure and 6 bar outlet pressure

\*2 P<sub>1</sub> max. 4 bar. We recommend for pre-pressure inline regulator R23-02F

<b>For your information:</b>	1 bar: 14.8 psi	1 l/min: 0.035 scfm	1 mm: 0.039 inch	Pressure gauge: Please consult chapter "Gauges"
	1 psi: 0.069 bar	1 scfm: 28.3 l/min	1 inch: 25.4 mm	

**Order example:**  
P180-02C