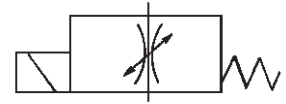


Description	Proportional flow valve controlled by plug amplifier of 0 - 10V or supply voltage 24V DC.		
Media	Valves for air can also be used for vacuum. Valves for water can also be used for oil.		
Electronics in plug	Conversion of the analogue signal into a pulse-wide modulated current.		
	Supply voltage: 24V DC, max. 1.1 A	Adjustment:	zero and range
	Switchable signal: 0 - 10 V, 0/4 - 20 mA	Time ramp:	0.1 s - 3 s, adjustable
	Close function at: < 2% of max. signal	Control frequency:	40 - 700 Hz, adjustable
Temperature range	-10 °C to +90 °C / 14 °F to 190 °F	Mounting position:	any
Viscosity	PV202, G^{1/8}	PV202, G^{1/4} - G^{3/8}	PV202, G^{3/8} - G^{1/2}
	-	21 cSt mm ² /s	40 cSt mm ² /s
Power consumption	8.6 W / 100 - 450 mA	11 W / 100 - 500 mA	11 W / 100 - 500 mA
Hysteresis/Sensitivity	5% FS / 1% FS	5% FS / 2% FS	7.5% / 2% FS
Repeatability	1% FS	3% FS	3% FS
Material body	brass	brass	brass
Material inner valve	SST, brass, PTFE, FPM	stainless steel, brass, PTFE, FPM	stainless steel, brass, PTFE, NBR



Ø 1.2 - 12.5 mm
air and water

Dimensions			Media	Connection	K _v -value	Flow rate	Pressure max.	Orifice Ø	Order number
H	W	D	A: air W: water	thread	(m ³ /h)	l/min*1	bar	mm	

Proportional flow valve*3									
air: directly controlled,					including connector				
water: indirectly controlled, 24V, w/o amplifier					PV202 / 3				
78	59	22	A	G ^{1/8}	0.05	70	8	1.2	PV202 - 1 - 12
					0.07	110	6	1.6	PV202 - 1 - 16
					0.10	70	4	2.4	PV202 - 1 - 24
					0.16	105	2.5	3.2	PV202 - 1 - 32
95	85	45	A/W*1	G ^{1/4}	0.04	60	16	1.2	PV202 - 2 - 12
					0.10	110	8	2.4	PV202 - 2 - 24
					0.26	170	4	3.2	PV202 - 2 - 32
					0.42	280	2.5	4.0	PV202 - 2 - 40
					0.70	310	1.4	5.6	PV202 - 2 - 56
					0.88	390	1.0	7.1	PV202 - 2 - 71
97	85	45	A/W*2	G ^{3/8}	0.28	190	4	3.2	PV202 - 3 - 32
					0.45	300	2.5	4.0	PV202 - 3 - 40
					0.72	330	1.4	5.6	PV202 - 3 - 56
					0.90	420	1.0	7.1	PV202 - 3 - 71
105	85	45	W	G ^{3/8}	2.1	85**	10	12.5	PV203 - 3 - 125
				G ^{1/2}	2.2	90**	10	12.5	PV203 - 4 - 125



PV202-1



PV202-2



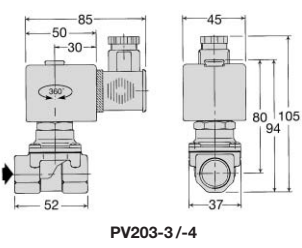
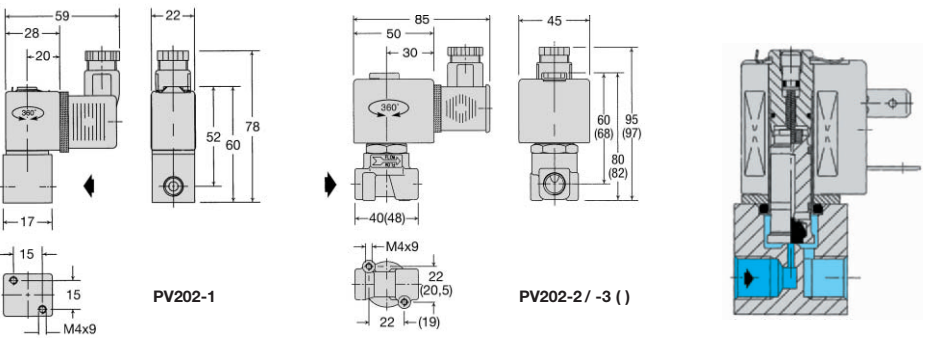
PV203-4



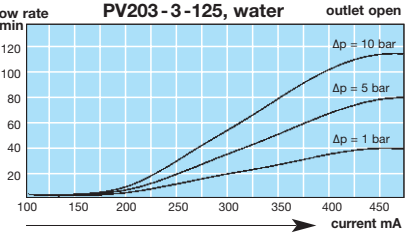
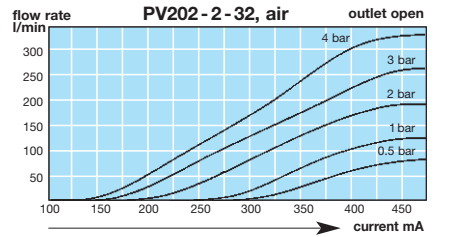
ZE908.A003

Special options add the appropriate letter

for water	or oil	G ^{1/4} and G ^{3/8}	only PV202	W	PV202 - . . . W
stainless steel	FPM/Viton elastomer		NPT only PV202	S	PV202 - . . . S
NBR elastomer	Buna N, Perbunan			B	PV202 - . . . B
EPDM elastomer	Ethylene-Propylene			E	PV202 - . . . E
PTFE elastomer	Teflon	only PV202-2 -12 and -24		T	PV202 - 2 - . . T
plug amplifier	ZE908.A003 for G ^{1/8} , ZE908.A001 for all others			Z	PV202 - . . . Z



*1 P₁ = 6 bar at PV202-1-12/ 1-16/ 2-12/ 2-24 and PV203, P₂ = 0 bar
 P₁ = 2 bar at PV202-1-24/ 1-32/ 2-32/ 2-40 P₂ = 0 bar
 P₁ = 1 bar at PV202-2-56/ 2-71 P₂ = 0 bar



*1 air flow at supply 6 bar and Δp = 1 bar
 *2 for water, add "W" on to order number
 *3 plug amplifier required
 *4 water flow

For your information:	1 bar: 14.8 psi	1 l/min: 0.035 scfm	1 mm: 0.039 inch
	1 psi: 0.069 bar	1 scfm: 28.3 l/min	1 inch: 25.4 mm

Order example:
PV202 - 2 - 12