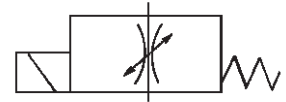
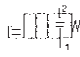
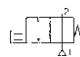


Description	The piezo miniature flow valve is highly reliable and combines precise control of flow rates with power consumption under 7 mW. It is extremely compact, not bigger than a thumb.	
Media	Compressed air or non-corrosive gases, oil-free and filtered to over 50 µm.	
Flange	According to CNOMO E06.36.120N (15x15) or CNOMO E06.05.80, 30 x 30 with adapter	
Control voltage	0 - 40V DC, over 10% stabilised	
Power consumption	< 7 mW, < 150 µA	
Protection class	IP 65, with connector	
Connector	CM6 with Pg7P cable passage	
Operating life	> 1 billion cycles at 6 bar	
Electrical installation	Caution! The unit has no protection against incorrect polarity!	
Cable connection	Red wire (+), black wire (-)	
Materials	Body: PPS plastic	Manifold M5: brass Manifold G1/8: zinc die-casting
	Inner parts: piezo ceramic and NBR	Manifold Ø4: polyamide
NB:	The current is to be limited by a > 30Ω resistor	



Ø 0.3 and 0.4 mm
Piezo, 7 mW

Description	Dimensions			K _v -value (m³/h)	Flow rate l/min*1	Pressure max. bar	Orifice Ø mm	Order number
	height mm	width mm	depth mm					

Piezo flow valve	with connector, without manifold and manual override				0 - 40V DC	PV630		
NC 	48	15	51	0.005	6	8	0.3	PV630 - 03
				0.006	7	4	0.4	PV630 - 04
NO 	48	15	51	0.005	6	8	0.3	PV631 - 03
				0.006	7	4	0.4	PV631 - 04



PV630-04



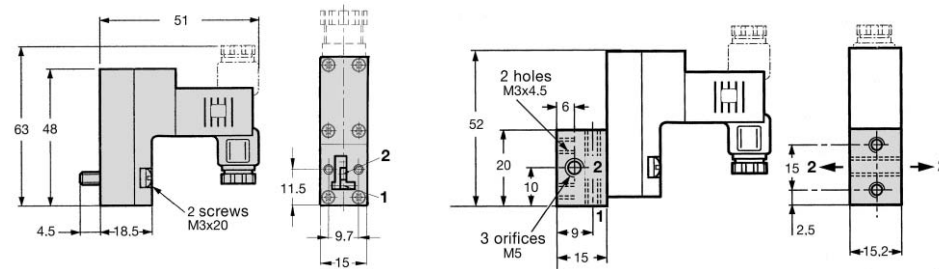
PV630-03L, with wire

Special options add the appropriate letter or number

without connector	protection class IP00	X	PV63 . . . X
with wire	1 m, red (+), black (-)	L	PV63 . . . L
manifold M5	Z303.000.01	01	PV63 . . . 01
manifold G1/8	Z353.000.47 + Z882.630.01	69	PV63 . . . 69
manifold Ø 4	Z353.000.69 + Z882.630.01	47	PV63 . . . 47
in-line manifold Ø 4	Z353.000.70*2 + Z882.630.01 (w/o picture)	70	PV63 . . . 70
in-line manifold G1/8	Z353.000.48 + Z882.630.01 (w/o picture)	48	PV63 . . . 48

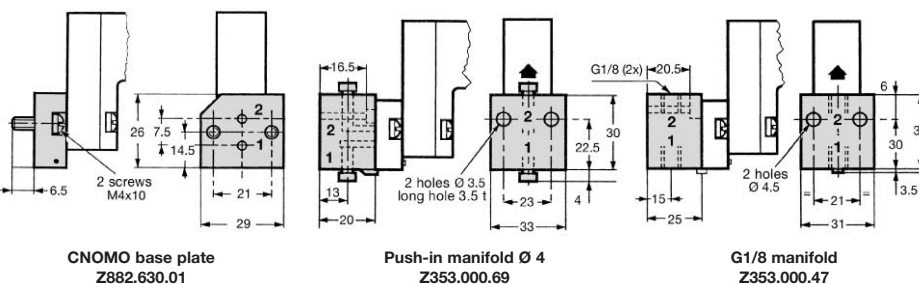
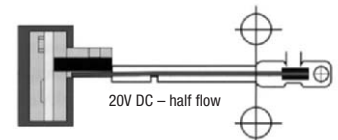


PV630-0401, with manifold M5



PV630 proportional valve with flange

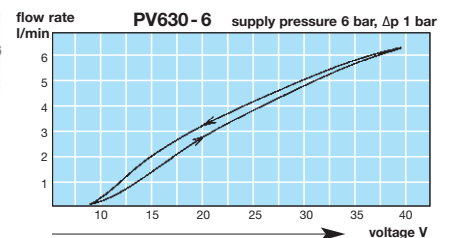
M5 manifold Z303.000.01



CNOMO base plate Z882.630.01

Push-in manifold Ø 4 Z353.000.69


G1/8 manifold Z353.000.47



*1 at 6 bar supply pressure and Δp = 1 bar

*2 two end plates Z353.000.071

For your information:	1 bar: 14.8 psi	1 l/min: 0.035 scfm	1 mm: 0.039 inch
	1 psi: 0.069 bar	1 scfm: 28.3 l/min	1 inch: 25.4 mm

 Order example:
PV630 - 04