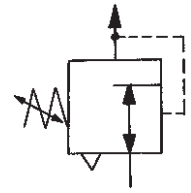


# "Mano" Pressure Regulator with 270° Adjustment Dial

R11 - R41

<b>Description</b>	Piston-operated regulator with balanced valve design and high-relief flow. Features include a transparent pressure-calibrated, non-rising adjusting dial which can be mounted in any position so the dial face is always visible. Pressure setting in steps is possible.				
<b>Handwheel</b>	The full secondary pressure range can be dialed in less than a 270° turn proportional to handwheel with scale in bar or psi. This is advantageous if secondary pressure must be changed frequently.				
<b>Supply pressure</b>	max. 21 bar min. 1 bar over outlet pressure				
<b>Constant bleed</b>	bleed rate 1.4 l/min at 7 bar inlet and 6 bar outlet pressure				
<b>Gauge port</b>	G1/4 on both sides of the body				
<b>Temperature range</b>	0 °C to 80 °C / 32 °F to 175 °F -20 °C to 100 °C / -4 °F to 212 °F				
<b>Materials</b>	Body: zinc Seals: NBR / nitrile	Bonnet: zinc and brass Piston: acetal	Valve assembly: brass, NBR, acetal Spring: steel		

**Panel mounting:** 1 hole of 67 mm diameter and 4 holes of 5.5 mm diameter  
**Mounting bracket:** fixed into gauge port



**fast adjustment  
pilot-regulated G<sup>1</sup>/<sub>4</sub> to G2**



Dimensions			K <sub>v</sub> -value (m <sup>3</sup> /h)	Flow rate		Pressure range bar	Connection thread G	Order number
B mm	H mm	C mm		m <sup>3</sup> /h*	l/min*			

"Mano" regulator			air consumption 1.4 l/min supply max. 21 bar	adjusting dial 270° turn wheel	R11-R41			
74	68	68	0.02	1.2	20	0... 3 0... 11	G <sup>1</sup> / <sub>4</sub>	R11-C2-L R11-C2-O
104	82	68	2.5	180	3000	0... 3 0... 11	G <sup>1</sup> / <sub>4</sub>	R21-C2-L R21-C2-O
104	82	68	2.5	270	4500	0... 3 0... 11	G <sup>3</sup> / <sub>8</sub>	R21-C3-L R21-C3-O
104	82	68	2.5	300	5000	0... 3 0... 11	G <sup>1</sup> / <sub>2</sub>	R21-C4-L R21-C4-O
132	110	68	6.7	480	8000	0... 3 0... 11	G <sup>3</sup> / <sub>4</sub>	R31-C6-L R31-C6-O
132	110	68	6.7	540	9000	0... 3 0... 11	G 1	R31-C8-L R31-C8-O
174	136	91	18.5	1320	22000	0... 3 0... 11	G 1 <sup>1</sup> / <sub>2</sub>	R41-CB-L R41-CB-O
174	136	91	20.0	1440	24000	0... 3 0... 11	G 2	R41-CC-L R41-CC-O



R21



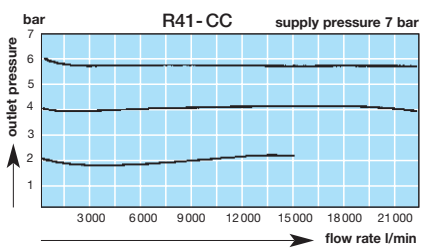
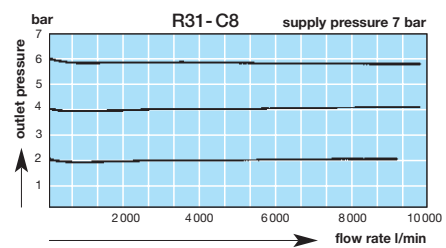
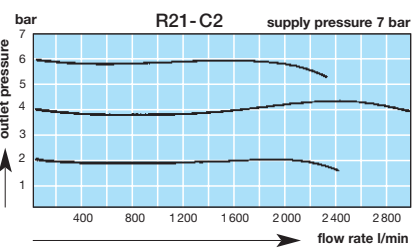
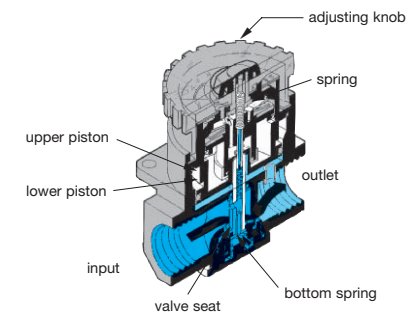
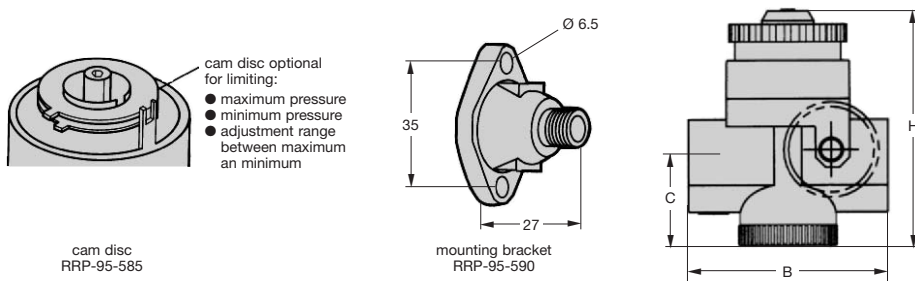
R31-C6



R41-CB

## Special options add the appropriate letter (only for R21 ... R41)

Special options	Accessories
pressure gauge	Ø 50, G <sup>1</sup> / <sub>4</sub> loose G R. 1 - C. . . G
tamper-proof	RRP-95-585 T R. 1 - C. . . T
mounting bracket	RRP-95-590 loose X R. 1 - C. . . X



\* at 7 bar supply pressure, 6 bar outlet pressure

<b>For your information:</b>	1 bar: 14.5 psi 1 psi: 0.069 bar	1 l/min: 0.035 scfm 1 scfm: 28.3 l/min	1 mm: 0.039 inch 1 inch: 25.4 mm	Pressure gauge: Please consult chapter "Gauges"
------------------------------	-------------------------------------	---	-------------------------------------	--

**Order example:**  
R31-C8-O