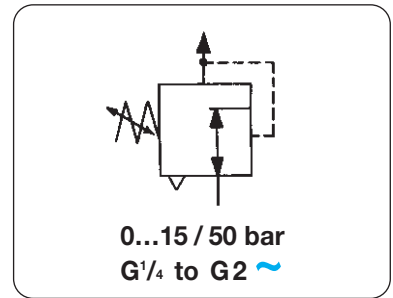


Description	Pressure regulator of solid design. No air consumption or constant bleed. Ideal for water or liquid applications.	
Adjustment	1/2" regulator, black adjusting knob T-handle with locking nut for all other regulators.	
Supply pressure	max. 30 bar / 450 psi, see chart	max. 50 bar / 740 psi, see chart
Relieving	standard, for compressed air	non-relieving, as option for water
Gauge port	1/2" on both sides of body plug supplied	
Temperature range	-10 °C to 90 °C / 14 °F to 200 °F with NBR (Buna N) -30 °C to 120 °C / -22 °F to 250 °F with FPM (Viton) -30 °C to 110 °C / -22 °F to 230 °F with EPDM for acetylene, water and CO ₂ for oxygen	
Materials	Body and spring cage: brass (<1/2"), bronze (>1/2") Diaphragm or seals: NBR (Buna N) standard	Inner valve: brass Option: FPM or EPDM



Dimensions	K _v -value	Flow rate	Reg. System	Supply pressure	Connection	Pressure range	Order number
A B C	(m ³ /h)	l/min*	D: diaphragm P: piston	max. recom.	thread	bar	

Pressure regulator up to 50 bar								brass and NBR, 30/50 bar relieving, without gauge, for air		R120
64	150	34	0.35	420	D	30	6	G 1/4	0.1 ... 1.5	R120-02A
					D	30	10		0.2 ... 3	R120-02B
					D	30	15		0.5 ... 8	R120-02C
					D	30	30		1 ... 15	R120-02D
					D	50	50		1 ... 15	R120-02E
					P	50	50		2 ... 30	R120-02F
					P	50	50		3 ... 50	R120-02G
80	165	38	1.0	1200	D	30	6	G 1/2	0.1 ... 1.5	R120-04A
					D	30	10		0.2 ... 3	R120-04B
					D	30	15		0.5 ... 8	R120-04C
					D	30	30		1 ... 15	R120-04D
					D	50	50		1 ... 15	R120-04E
					P	50	50		2 ... 30	R120-04F
					P	50	50		3 ... 50	R120-04G
132	295	65	4.2	5000	D	30	6	G1	0.1 ... 1.5	R120-08A
					D	30	10		0.2 ... 3	R120-08B
					D	30	15	R120-06.	0.5 ... 8	R120-08C
					D	30	30	für G 3/4	1 ... 15	R120-08D
					P	50	50		2 ... 30	R120-08F
					P	50	50		3 ... 50	R120-08G
205	360	110	12.6	15000	P	50	6	G2	0.1 ... 1.5	R120-16A
					P	50	10		0.2 ... 3	R120-16B
					P	50	15	R120-12.	0.5 ... 8	R120-16C
					P	50	30	für G 1 1/2	1 ... 15	R120-16D
					P	50	50		2 ... 30	R120-16F
					P	50	50		3 ... 50	R120-16G



R120-02DG R120-04CG



R120-08EG

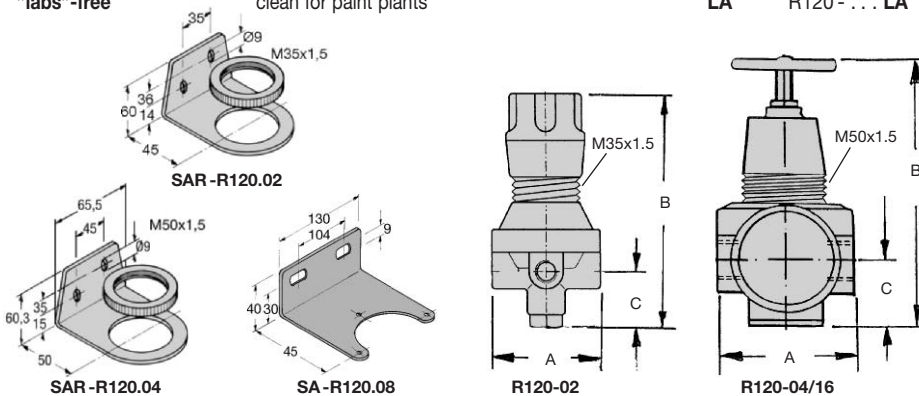


R120-12EG

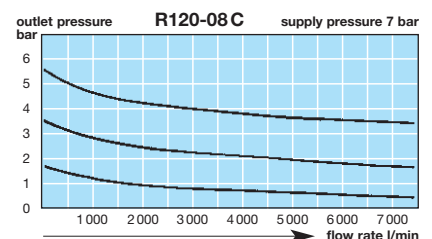
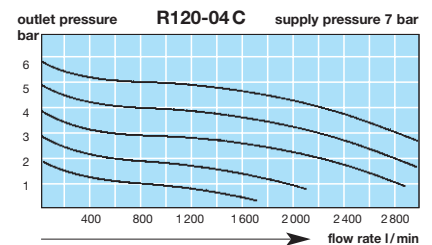
Special options add the appropriate letter

non-relieving	for gases or liquids	K	R120-... K
pressure gauge	loose up to 25 bar > 30 bar	G	R120-... G
pressure gauge	for oxygen, loose up to 25 bar	GO	R120-... GO
NPT thread		N	R120-... N
acetylene (1.5 bar)	C ₂ H ₂ : 19	argon Ar: 05	water H ₂ O: W
carbon dioxide	CO ₂ : 03	methane CH ₄ : 13	propane C ₃ H ₈ : 16
oxygen	O ₂ : 15	helium He: 09	hydrogen H ₂ : 11
mounting bracket + nut	SAR-R120.02 (G 1/4)	SAR-R120.04 (G 1/2)	X
mounting bracket	SA -R120.08 (G1)	SA -R120.16 (G2)	X
panel mounting nut	SM -R120.02 (G 1/4)	SM -R120.04 (G 1/2)	P
T-handle	instead of knob	only R120-02	T
"labs"-free	clean for paint plants		LA

Accessories



* at 7 bar supply pressure, 6 bar outlet pressure and 1 bar pressure drop



For your information:	1 bar: 14.5 psi	1 l/min: 0.035 scfm	1 mm: 0.039 inch
	1 psi: 0.069 bar	1 scfm: 28.3 l/min	1 inch: 25.4 mm

Order example:
R120-02C