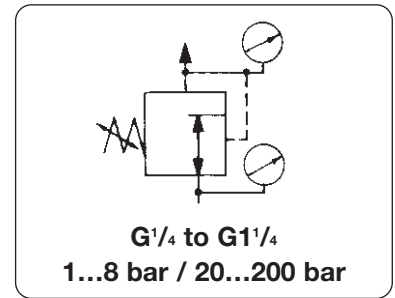


# High Pressure Regulator for Outlet Pressure up to 200 bar

RH10

<b>Description</b>	Hand-operated, spring-loaded high pressure regulator for maximum supply pressure of 220 bar / 2900 psi. For outlet pressures up to 15 bar the regulator has a diaphragm, for higher outlet pressures a piston. The input is protected by a sinter-bronze filter. RH10-A is equipped with supply pressure variation compensation.		
<b>Media</b>	Compressed air, nitrogen, liquid gas and all neutral gases.		
<b>Relieving</b>	Non-relieving as standard, relieving as option		
<b>Gauges</b>	For supply and outlet pressure. Gauge pressure range about 30% over maximum possible regulator pressure.		
<b>Safety valve</b>	Safety valve setting point 10% higher than maximum possible setting point of pressure range.		
<b>Temperature range</b>	-10 °C to 60 °C / 14 °F to 140 °F for media and environment, -20 °C to 90 °C storage		
<b>Materials</b>	Body: brass, RH10-02 nickel-plated Diaphragm: G <sup>1</sup> / <sub>4</sub> + G <sup>3</sup> / <sub>8</sub> stainless steel Piston: G <sup>1</sup> / <sub>4</sub> stainless steel	Valve seat: nylon G1 + G <sup>1</sup> / <sub>4</sub> : NBR Elastomer: NBR, RH10-02 FPM / PTFE	Inlet filter: sinter-bronze G <sup>3</sup> / <sub>8</sub> : neoprene



Dimensions	Principle	Safety	Flow	Connection	Pressure	Order
A B C	D: Diaphr.	valve	rate	thread	range	number
mm mm mm	P: Piston	S: included	l/min*	in / out	bar	

High pressure regulator 220 bar				non-relieving, gauges supplied for compressed air		RH10		
135	180	70	D	S	1 000	DIN 477 / 1/4"i	1... 8	RH10-02A
135	180	70	D	S			1... 15	RH10-02B
150	180	70	P	S			3... 30	RH10-02C
150	180	70	P	S			5... 50	RH10-02D
150	180	70	P	S			10...100	RH10-02E
150	180	70	P	-			20...200	RH10-02F
153	220	80	D	S	3 300	DIN 477 / 1/2"a	1... 8	RH10-03A
153	220	80	D	S		1/2"a	1... 15	RH10-03B
169	220	80	P	S		3/8"i	3... 30	RH10-03C
169	220	80	P	-		3/8"i	5... 50	RH10-03D
169	220	80	P	-		3/8"i	20...200	RH10-03F
153	188	80	D	S	10 000	DIN 477 / 1/2"a	1... 15	RH10-A3B
169	188	80	P	S		3/8"i	3... 30	RH10-A3C
169	188	80	P	-		3/8"i	5... 50	RH10-A3D
169	188	80	P	-		3/8"i	20...200	RH10-A3F
320	175	110	D	S	13 000	3/4" a / 3/4"a	1... 8	RH10-06A
320	175	110	D	S			1... 15	RH10-06B
328	175	110	P	S			3... 30	RH10-06C
332	175	110	P	S			5... 50	RH10-06D
350	198	135	D	S	25 000	1" a / 1"a	1... 10	RH10-08A
350	198	135	D	S			1... 15	RH10-08B
350	198	135	P	S			3... 30	RH10-08C
402	198	135	P	S			5... 50	RH10-08D
385	198	135	P	-			20...200	RH10-08E
380	200	135	D	S	50 000	1" a / 1 1/4"i	1... 10	RH10-10A
380	200	135	D	S			1... 15	RH10-10B
380	200	135	P	S			5... 50	RH10-10D



RH10-02B



RH10-03B



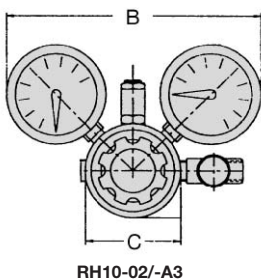
RH10-A3B



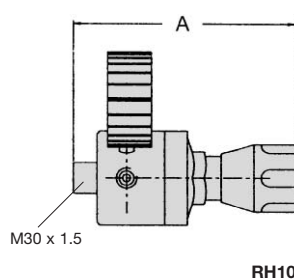
RH10-08B

## Special options add the appropriate letter or number

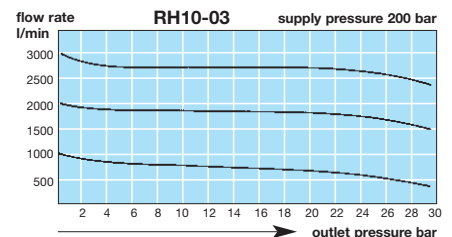
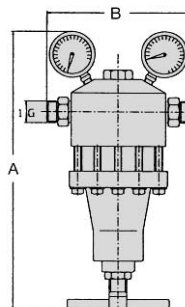
diaphragm relieving				R	RH10-... R
piston relieving				R	RH10-... R
FPM elastomer	Viton			V	RH10-... V
EPDM elastomer				E	RH10-... E
PTFE elastomer	Teflon			T	RH10-... T
SST diaphragm	316 stainless steel		RH10-06/-08/-10	S	RH10-... S
panel mounting			RH10-02/-03/-13	P	RH10-... P
mounting bracket	SA-RH1002		SA-RH1003	X	RH10-...03X
mounting bracket	SA-RH1006		SA-RH1008	X	RH10-...08X
acetylene C <sub>2</sub> H <sub>2</sub> :	19	argon Ar:	05	helium He:	09
carbon dioxide CO <sub>2</sub> :	03	methane CH <sub>4</sub> :	13	propane C <sub>3</sub> H <sub>8</sub> :	16
oxygen O <sub>2</sub> :	15	nitrogen N <sub>2</sub> :	07	hydrogen H <sub>2</sub> :	11



RH10-02/-A3



RH10-03/-06/-08



\*1 at 200 supply pressure and 50 bar outlet pressure

<b>For your information:</b>	1 bar: 14.5 psi	1 l/min: 0.035 scfm	1 mm: 0.039 inch
	1 psi: 0.069 bar	1 scfm: 28.3 l/min	1 inch: 25.4 mm

**Order example:**  
RH10-02C