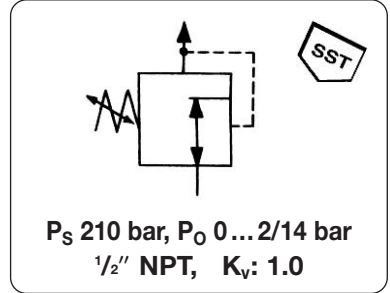


High Flow, High Purity Pressure Regulator, supply max. 210 bar

RH2



Description	For use as purge gas regulator suitable for high purity gas systems involving corrosive or toxic media. With large main valve and flow capacity of $K_v = 1.0$. The main valve is balanced to minimize supply pressure fluctuation.		
Media	Corrosive or non-corrosive gases or those requiring high purity regulation. Compatible with construction materials.		
Supply pressure	max. 210 bar min. 14 bar		
Proof pressure	150% of rated pressure 400% burst pressure	Flow rate: K_v 1.0 m ³ /h	
Temperature range	-54 °C to 77 °C / -65 °F to 170 °F operating temperature		
Materials	Body: brass or 316L SST Bonnet: nickel-plated brass Inner valve: 316 stainless steel	Diaphragm: 316 stainless steel Valve seat: PCTFE Seals: Teflon	



Dimensions	Body	Gauge ports	K _v -value	Pressure range	Order number
height mm	Ø mm	2 x 60°	(m ³ /h)	bar	

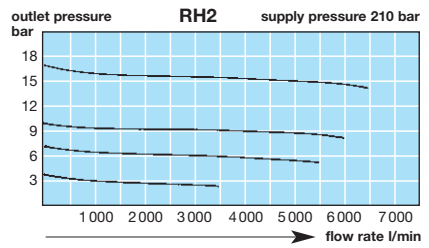
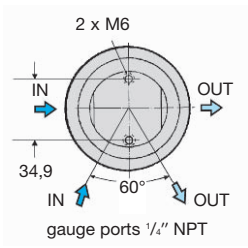
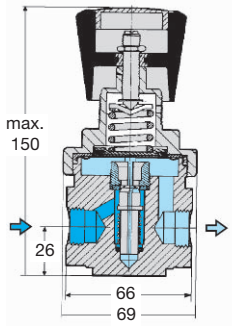
High pressure regulator 210 bar		1/2" NPT, non-relieving, with gauge ports		RH2		
150	69	brass	in / out	1.0	0.2... 1.7 bar	RH2-04A
					0.2... 3.5 bar	RH2-04B
					0.5... 7 bar	RH2-04C
					1.0...10 bar	RH2-04D
					1.0...14 bar	RH2-04E
150	69	316 L	in / out	1.0	0.2... 1.7 bar	RH2-04AS
					0.2... 3.5 bar	RH2-04BS
					0.5... 7 bar	RH2-04CS
					1.0...10 bar	RH2-04DS
					1.0...14 bar	RH2-04ES



RH2

Special options add or change the appropriate letter or number

3/8" NPT port	inlet and outlet connection	3	RH2-03.
mounting nut	SM-RD, for panel mounting	P	RH2-04.P



For your information:	1 bar: 14.5 psi	1 l/min: 0.035 scfm	1 mm: 0.039 inch
	1 psi: 0.069 bar	1 scfm: 28.3 l/min	1 inch: 25.4 mm

Order example:
RH2-04A