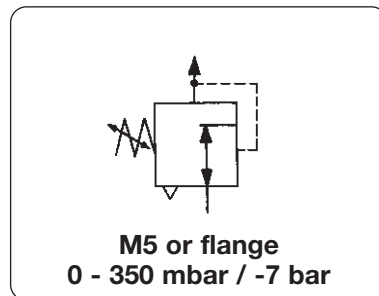




Miniature Precision Pressure Regulator

RT

Description	Compact, high-precision pressure regulator for panel-mounting, ink systems, analyzing equipment and hand-held calibration devices.
Media	Neutral gases, filtered, lubricated or unlubricated compressed air
Pressure regulation	by knob, with locknut
Constant bleed	1.5 l/min at 7 bar supply pressure
Supply pressure	max. 17 bar
Flow rate	100 l/min
Operating temperature	-40 °C to 70 °C / -40 °F to 160 °F
Storage temperature	-40 °C to 90 °C / -40 °F to 190 °F
Materials	Body: anodized aluminium Inner valve: brass, stainless steel, Viton



Dimensions		Flow rate l/min**	Connection thread G	Pressure range bar	Order number
Ø mm	high mm				

Pressure regulator M5	supply max. flow rate	17 bar 100 l/min	with constant bleed	RT	
					Ø
25	83	100	M5	0 ... 0.35	RT - M5A
				0 ... 1.1	RT - M5B
				0 ... 2.1	RT - M5C
				0 ... 4.2	RT - M5D
				0 ... 7.0	RT - M5E



RT - M5C 25 x 86

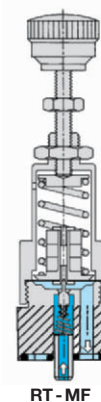
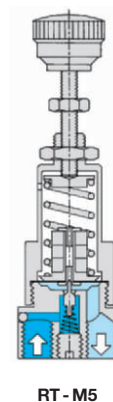
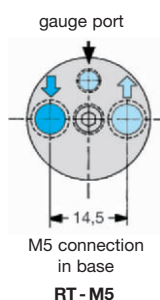
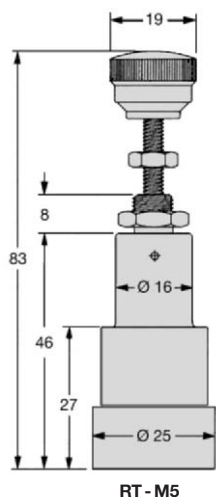
Flange regulator	supply max. flow rate	17 bar 100 l/min	with constant bleed	RT	
					Ø
25	83	100	Flange	0 ... 0.35	RT - MFA
				0 ... 1.1	RT - MFB
				0 ... 2.1	RT - MFC
				0 ... 4.2	RT - MFD
				0 ... 7.0	RT - MFE



RT - MFC with flange

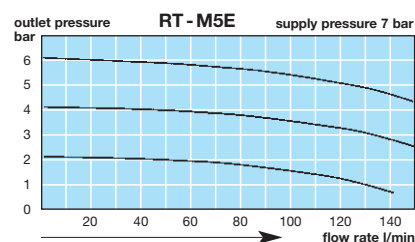
Special options add the appropriate letter

1/16" NPT	ports female	N	RT - MN.
side connection	M5 or O-Ring,	H	RT - M5 . H
mounting bracket	SA-RT	X	RT - M5 . X



RT - M5

RT - MF



** at 8 bar supply pressure, 6 bar outlet pressure and Δp = 1 bar

Order example:
RT - M5B