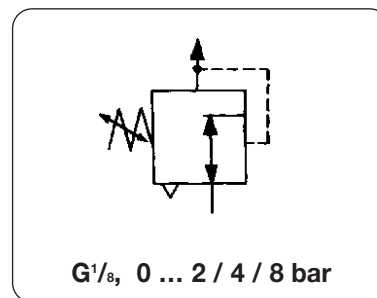




Miniature Precision Pressure Regulator \varnothing 35

RI

Description	Precision pressure regulator of very small design and low air consumption	
Supply pressure	max. 10 bar	min. 0.5 bar Δp to outlet pressure
Constant bleed	max. 5 l/min at 10 bar supply pressure	Test pressure max. 15 bar
Gauge port	G $\frac{1}{8}$ on both sides of the body	
Sensitivity	$\pm 0.2\%$ FS	Reproducibility $\pm 0.5\%$ FS
Temperature range	- 5 °C to 60 °C / 23° F to 140 °F	
Materials	Body: zinc die-casting, paint finish Inner valve: brass and stainless steel	Diaphragm: NBR Elastomer: NBR



Dimensions		Flow rate	Connection thread	Pressure range	Order number
width	height				
mm	mm	l/min	G	bar	

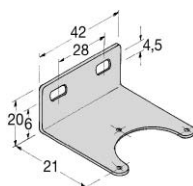
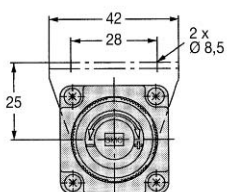
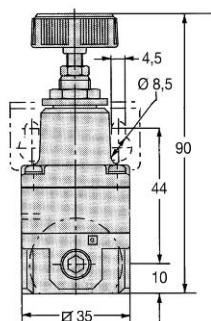
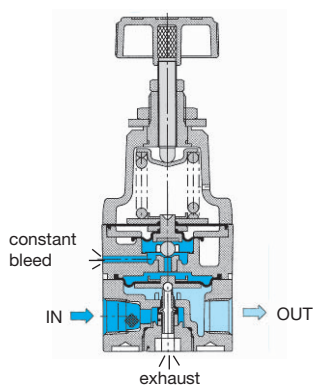
Miniature precision regulator				supply max. 10 bar w/o pressure gauge	RI
35	90	200	G $\frac{1}{8}$	0.05 ... 2 bar	RI-01A
				0.05 ... 4 bar	RI-01B
				0.05 ... 8 bar	RI-01C



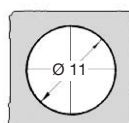
RI-01CG, with gauge

Special options add the appropriate letter

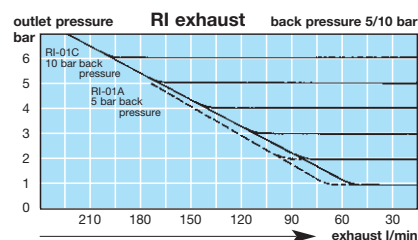
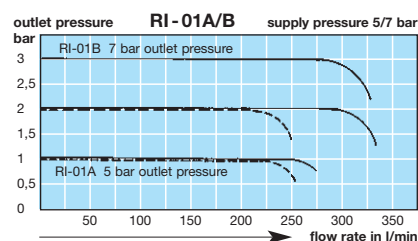
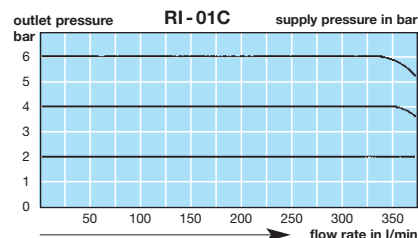
NPT ports			N	RI-01.N
pressure gauge	MA2301	\varnothing 23	G	RI-01.G
mounting bracket	SA13-RI	\varnothing 11	X	RI-01.X



SA13-RI



panel cut-out



For your information:	1 bar: 14.5 psi	1 l/min: 0.035 scfm	1 mm: 0.039 inch
	1 psi: 0.069 bar	1 scfm: 28.3 l/min	1 inch: 25.4 mm



Order example:
RI-01A