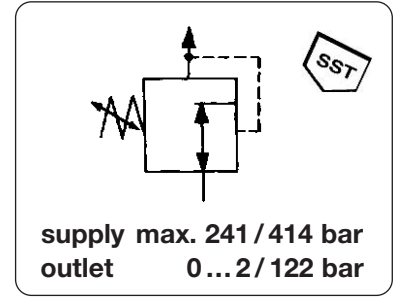


Miniature High Pressure Regulator up to 414 bar

RH0/RH1

Description	High pressure miniature regulator for all gases, corrosive or non-corrosive (RH0) and liquids (RH1) compatible with materials of construction: aluminium, brass or stainless steel. Non-relieving. max. 150% of operating pressure. Burst pressure max. 400% of operating pressure	
Proof pressure	max. 150% of operating pressure. Burst pressure max. 400% of operating pressure	
Gauge port	1/4" NPT for inlet and outlet pressure	
Media	RH0 All gases, corrosive or non-corrosive	RH1 all gases or liquids compatible with materials of constr.
Flow rate	0.05 m³/h	0.05 m³/h
Leak rate	2x10⁻⁸ mbar l/s He, internal volume 3cc	bubble-tight, 0.1 ml/min
Operating temperature	-40 °C to 60 °C / -40 °F to 140 °F	-20 °C to 70 °C / -4 °F to 160 °F
Operating system	diaphragm of stainless steel 316 SST	piston with EPDM seal, as option NBR or FKM
Material:	Body 316 SST, brass or aluminium as option	aluminium 6061, nickel-plated
Seat	Teflon PFA or PCTFE as option	PCTFE or Vespel as option
Inner valve	316 SST or brass on brass model	300 SST and aluminium



Dimensions	Gauge ports	K _v -value	Pressure range	Order number
height mm	Ø mm		bar	
	2 x 1/4" NPT	m³/h		

Regulator 241 bar		1/4" NPT brass body,	for gases, diaphragm 316 SST,	non-relieving Teflon	RH0
82	41	P _S and P _O	0.05	0.2 ... 2 bar	RH0-02A
				0.4 ... 4 bar	RH0-02B
				0.6 ... 7 bar	RH0-02C



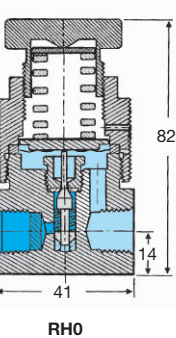
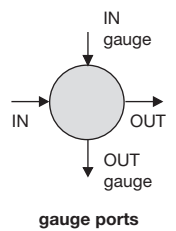
RH0

Regulator 414 bar		1/4" NPT, aluminium body,	for gases and liquids, piston with EPDM,	non-relieving Teflon	RH1
76	46	P _S and P _O	0.05	0.5 ... 5 bar	RH1-02A
				0.5 ... 9 bar	RH1-02B
				1.5 ... 15 bar	RH1-02C
76	46	P _S and P _O	0.05	4 ... 47 bar	RH1-02D
				8 ... 81 bar	RH1-02E
				10 ... 122 bar	RH1-02F

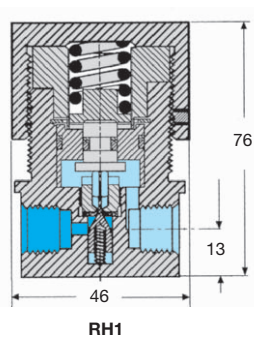


RH1

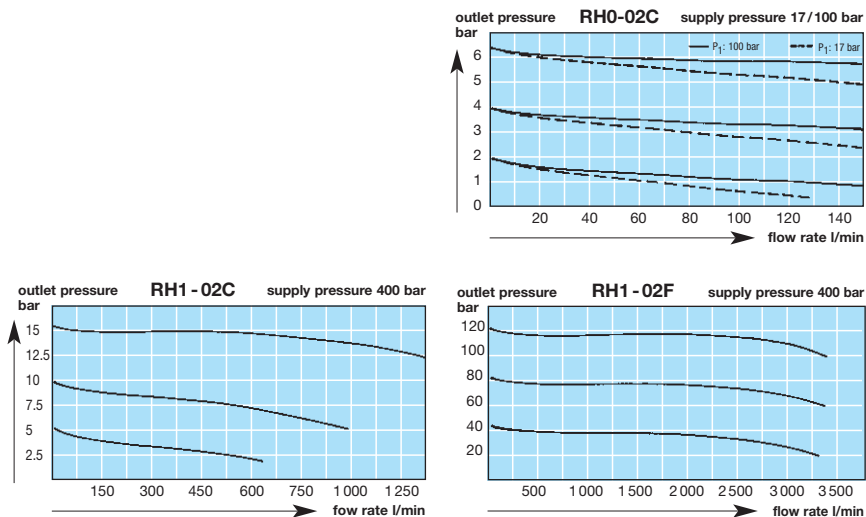
Special options add the appropriate letter					
ports 1/8" NPT	in and out	only RH0	1		RH0-01 .
aluminium body		only RH0	A		RH0-02 . A
stainless steel body	316 SST	only RH0	S		RH0-02 . S
PCTFE seat		only RH0	U		RH0-02 . U
Vespel seat		only RH1	V		RH1-02 . V
NBR O-ring		only RH1	N		RH1-02 . N
FKM O-ring		only RH1	Z		RH1-02 . Z
oxygen	up to 200 bar	all	O		RH . -02 . O



RH0



RH1



For your information:	1 bar : 14.5 psi	1 l/min : 0.035 scfm	1 mm : 0.039 inch
	1 psi : 0.069 bar	1 scfm : 28.3 l/min	1 inch : 25.4 mm

Order example:
RH0-02C