

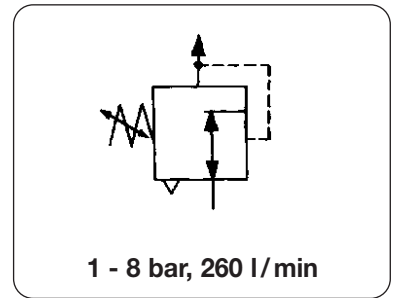
Cartridge Pressure Regulator

RC

Miniature



Description	Piston-operated cartridge pressure regulator for assembly in block	
Media	Compressed air filtered to 50 µm, lubricated or unlubricated	
Flow rate	150 / 250 l/min at $\Delta p = 1$ bar,	400 / 600 l/min with open outlet
Relieving	relieving as standard	Gauge port none
Supply pressure	2 bar to 10 bar	Mounting position any
Temperature range	-20 °C to 60 °C / -4 °F to 140 °F	
Materials	nickel-plated brass and NBR	



Dimensions height mm	Ø mm	Flow rate l/min*	Supply pressure max. bar	Pressure range bar	Connction thread	Order number
----------------------------	---------	------------------------	--------------------------------	--------------------------	---------------------	-----------------

Cartridge pressure regulator 1 - 8 bar, supply pressure max. 10 bar						RC
33	15	150	10	1 ... 8 bar	01	RC-01C
35	19	260	10	1 ... 8 bar	02	RC-02C

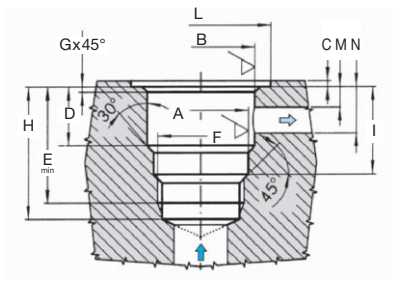


RC-01C

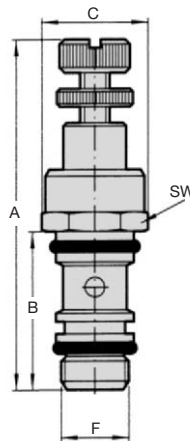
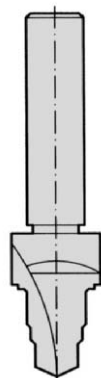
Drill for cartridge seat		RCS
-	16	01
-	20	02



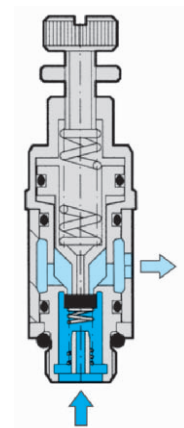
RC-02C



drill



cartridge pressure regulator

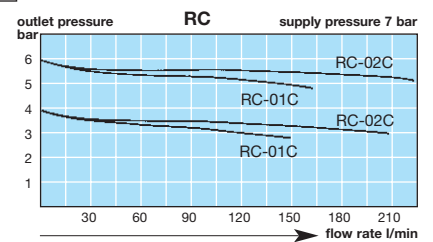


RC

drill	F	A	B	C	D
RCS-01	1/8	9.8 - 0.1/-0	11.2 ± 0.05	0.5 ± 0.5	15.6 ± 0.07
RCS-02	1/4	13.5 + 0.1/-0	14.4 ± 0.05	0.5 ± 0.5	17.5 ± 0.07

regulator	F	A	B	C	SW
RC-01C	1/8	51/57	24.3	15	14
RC-02C	1/4	57/63	27.8	19	17

drill	E	G	H	I	L	M	N
RCS-01	24.6	0.3	27	18.1 ± 0.2	15.4	3.5	12
RCS-02	28	0.4	31.2	20.8 ± 0.2	19.4	3.5	13.5



Order example:
RC-01C