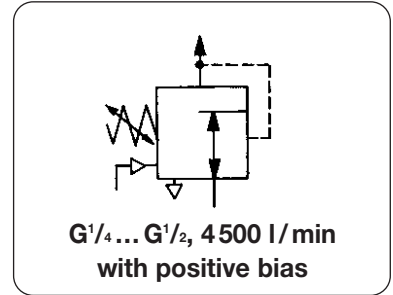


<b>Description</b>	Pilot-operated volume booster with positive bias designed to supply outlet pressure equal to signal pressure plus an adjustable pre-set spring constant. With very high forward and reverse flow characteristics and excellent sensitivity. A typical application is balancing or regulating pressure in tanks.		
<b>Supply pressure</b>	max. 16 bar / 240 psi	<b>Repeatability:</b>	10 mbar
<b>Flow capacity</b>	4500 l/min / 160 scfm	<b>Air consumption:</b>	1.5 l/min at 5 bar, 4 l/min at 10 bar supply
<b>Exhaust capacity</b>	900 l/min / 32 scfm at downstream pressure 0.35 bar / 5 psi above set pressure, sensitivity 2 mbar		
<b>Effect of supply change</b>	outlet pressure range < 6 mbar / 0.1 psi for 7 bar / 100 psi supply fluctuation		
<b>Temperature range</b>	-20°C to 60 °C / -4 °F to 140 °F	<b>Relieving port:</b>	1/4" on R03-02, 3/8" for all other R03
<b>Materials</b>	Body: zinc die-casting Diaphragm: NBR (Buna N)	Inner valve: brass Spring: zinc-plated steel	



Dimensions	Pressure	K <sub>v</sub> -	Flow	Connection	Pressure	Order
height width	preset	value	rate	thread	range	number
mm mm	bar	(m <sup>3</sup> /h)	l/min*1	G*2	bar	

Volume booster 1:1	tapped exhaust, supply max. 16 bar with constant bleed, pressure range 0 - 10 bar					R03-..J
106 82 -	2.8	3300	G 1/4	0.03 ... 10	R03-02J	
-	3.2	3800	G 3/8		R03-03J	
-	3.8	4500	G 1/2		R03-04J	

Positive bias booster	supply max. 16 bar pressure range 0 - 10 bar					R03-..J
142 82 0 ... 1 bar	2.8	3300	G 1/4	0.03 ... 10	R03-02J1	
	3.2	3800	G 3/8		R03-03J1	
	3.8	4500	G 1/2		R03-04J1	
180 82 0 ... 6 bar	2.8	3300	G 1/4	0.03 ... 10	R03-02J6	
	3.2	3800	G 3/8		R03-03J6	
	3.8	4500	G 1/2		R03-04J6	

Special options	add the appropriate letter					
<b>pressure gauge</b>	Ø63,	G 1/4	loose	<b>G</b>	R03-0.J.G	
<b>mounting bracket</b>	SA-R03,	dimensions as per regulator R03			<b>X</b>	R03-0.J.X



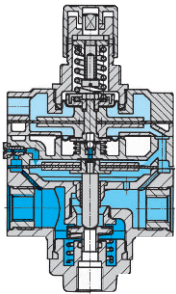
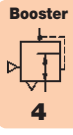
R03-..J



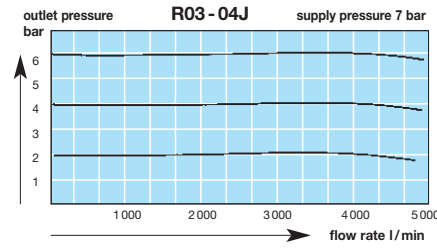
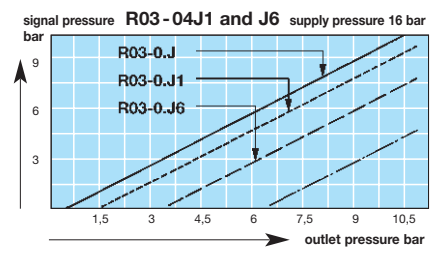
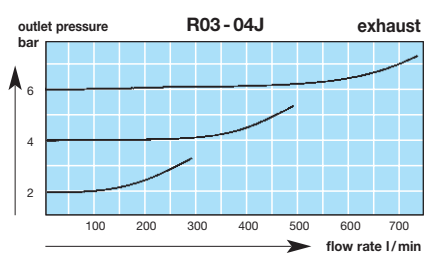
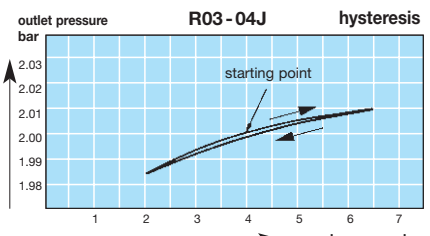
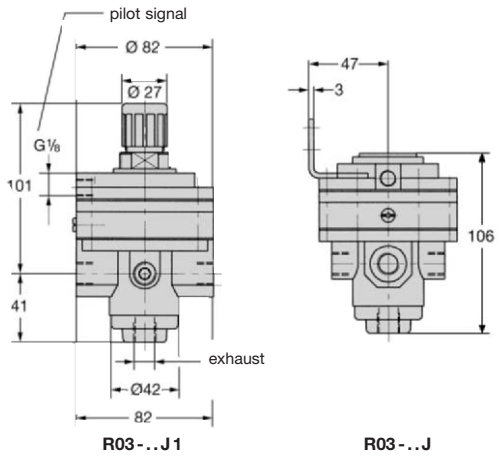
R03-..J1



R03-..J6



R03-..J6 cross-section



\*1 at 7 bar supply pressure and 6 bar outlet pressure

\*2 standard unit G1/2; smaller ports are reduced with fittings

<b>For your information:</b>	1 bar: 14.8 psi 1 psi: 0.069 bar	1 l/min: 0.035 scfm 1 scfm: 28.3 l/min	1 mm: 0.039 inch 1 inch: 25.4 mm	Pressure gauge: Please consult chapter "Gauges"
------------------------------	-------------------------------------	---	-------------------------------------	--

**Order example:**  
R03-04J