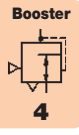
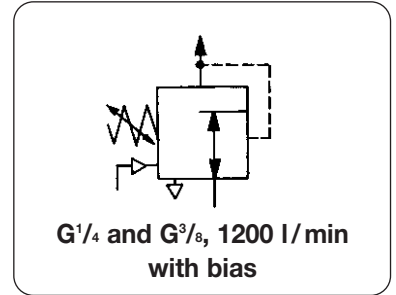


Description	Signal-operated regulator designed to supply outlet pressure which is the sum of the input signal pressure plus a preset bias. As an option, the relay can start with bias range -0.3 bar / -4 psi. The relay can also be used as a differential pressure regulator.		
Exhaust capacity	400 l/min / 15 scfm at 0.3 bar / 5 psi above set pressure	Flow capacity:	1200 l/min / 50 scfm at 7 bar supply and 1.4 bar / 20 psi outlet pressure
Sensitivity	< 1 mbar 1/4" W.C.	K_v-value:	0.7 m ³ /h
Gauge port	G1/4 on both sides of body	Mounting position:	any
Temperature range	-40 °C to 90 °C / -40 °F to 200 °F	Air consumption:	1- 3 l/min
Materials	Body: zinc die-casting Inner valve: brass	Diaphragm: NBR (Buna N) Knob: plastic	



Dimensions		Flow rate l/min*	Supply pressure		Connection thread G	Pressure range bar	Order number
height mm	width mm		recomm. bar	max. bar			

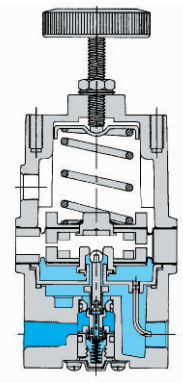
Positive bias relay				supply max. 17 bar K _v : 0.7 (m ³ /h)	with constant bleed 1200 l/min	R650		
170	76	76	1200	5	17	G1/4	0... 1	R650-02C
				5			0... 2	R650-02D
				8			0... 4	R650-02E
				15			0...10	R650-02F
170	76	76	1300	5	17	G3/8	0... 1	R650-03C
				5			0... 2	R650-03D
				8			0... 4	R650-03E
				15			0...10	R650-03F



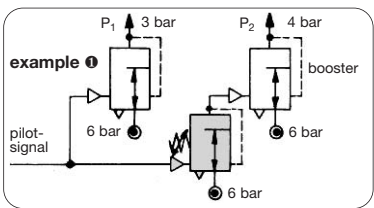
R650

Special options add the appropriate letter

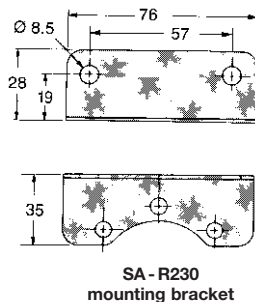
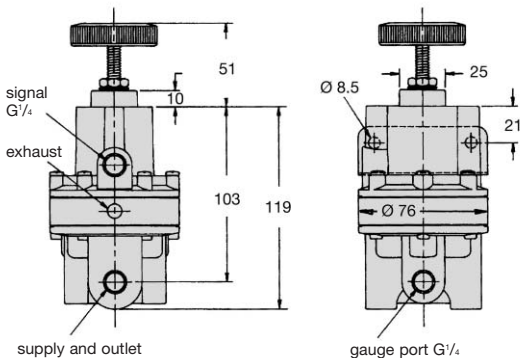
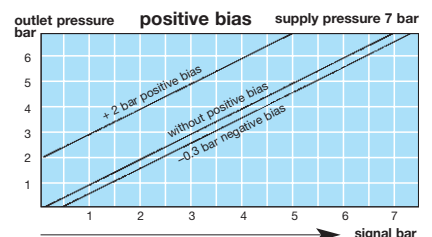
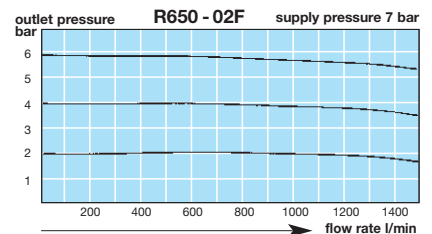
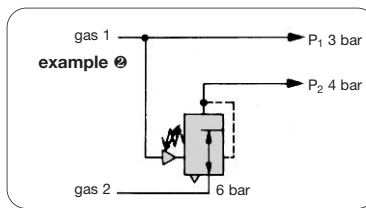
negative bias -0.3 bar	range e.g. -0.3 bar to 4 bar	Z	R650-0.. Z
pressure gauge	Ø 50, centre back male G1/4, psi/bar	G	R650-0.. G
tapped exhaust	G1/8 port	E	R650-0.. E
NPT thread		N	R650-0.. N
tamper-proof cap		T	R650-0.. T
mounting bracket	SA-R230	X	R650-0.. X



cross-section



pressure difference P₁ - P₂ = constant e.g. 1 bar



*1 at 7 bar supply pressure and 2 bar outlet pressure

For your information:	1 bar: 14.8 psi 1 psi: 0.069 bar	1 l/min: 0.035 scfm 1 scfm: 28.3 l/min	1 mm: 0.039 inch 1 inch: 25.4 mm	Pressure gauge: Please consult chapter "Gauges"
------------------------------	-------------------------------------	---	-------------------------------------	--

Order example:
R650-02F