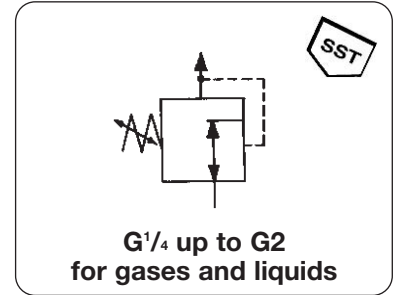


# Stainless Steel Low Pressure Regulator

R3100

<b>Description</b>	Solid-built low pressure precision regulator of stainless steel throughout. Version G <sup>1/4</sup> with stainless steel diaphragm, all others of NBR.		
<b>Media</b>	Compressed air or gases compatible with materials of construction.		
<b>Supply pressure</b>	max. 6 bar, min. 10% over setpoint pressure	<b>Mounting position:</b>	any
<b>Gauge ports</b>	1/4" on both sides of the body	<b>Non-relieving:</b>	standard, relieving as option
<b>Temperature range</b>	0 °C to 70 °C / 32 °F to 160 °F	<b>Air consumption:</b>	no constant bleed
<b>Materials</b>	Diaphragm Elastomer Body + inner valve	<b>G<sup>1/4</sup></b> SST 316 Viton SST 316	<b>G<sup>1/2</sup></b> NBR Viton SST 316  <b>G1 and G2</b> NBR Viton SST 316

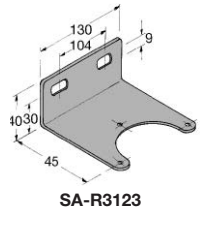
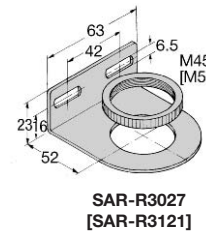
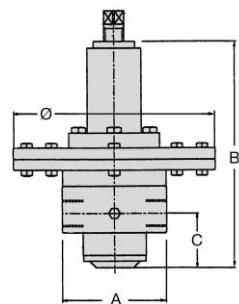
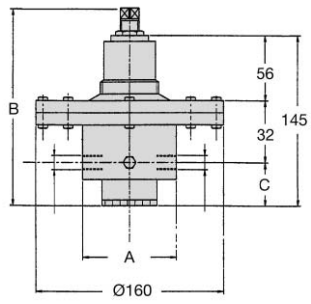
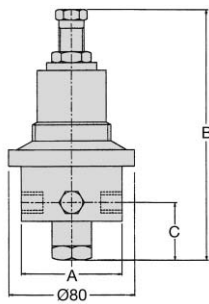
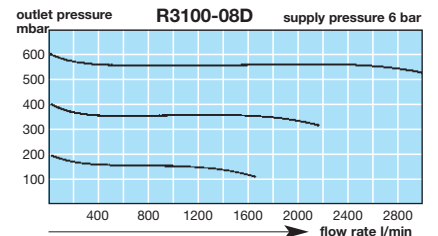
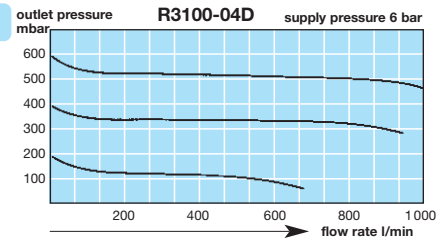


Dimensions			K <sub>v</sub> -value (m³/h)	Flow rate l/min*1	Connection thread G	Pressure range bar	Order number
A	B	C					

Low Pressure Regulator				supply pressure max. 6 bar non-relieving, for air, without gauge		R3100	
70	160	36	0.3	400	G <sup>1/4</sup>	80... 200	R3100-02C
						180... 1200	R3100-02E
80	170	37	0.4	600	G <sup>1/2</sup> *2	5... 45	R3100-04B
						20... 200	R3100-04C
						150... 700	R3100-04D
125	275	66	1.8	3000	G1	20... 50	R3100-08A
						50... 100	R3100-08B
						100... 700	R3100-08D
						700... 6000	R3100-08G
200	355	90	5.7	8000	G2	20... 50	R3100-16A
					R3100-12.	50... 150	R3100-16B
					for G <sup>1/2</sup>	150... 300	R3100-16D
						300... 3000	R3100-16G



Special options		add the appropriate letter or number	
pressure gauge	stainless steel, rearside, mbar-range	<b>G</b>	R3100 - ... <b>G</b>
acetylene	C <sub>2</sub> H <sub>2</sub> : <b>19</b>	argon Ar: <b>05</b>	helium He: <b>09</b>
carbon dioxide	CO <sub>2</sub> : <b>03</b>	methane CH <sub>4</sub> : <b>13</b>	propane C <sub>3</sub> H <sub>8</sub> : <b>16</b>
oxygen	O <sub>2</sub> : <b>15</b>	nitrogen N <sub>2</sub> : <b>07</b>	hydrogen H <sub>2</sub> : <b>11</b>
mounting bracket + nut	SAR-R3121	for G <sup>1/4</sup> and G <sup>1/2</sup>	<b>X</b>
mounting bracket	SA - R3123 on the body	for G1	<b>X</b>
mounting nut	SM-R3121	for G <sup>1/4</sup> and G <sup>1/2</sup>	<b>Q</b>



\*1 at supply pressure 6 bar

\*2 outlet port G<sup>3/4</sup>

<b>For your information:</b>	1 bar: 14.5 psi 1 psi: 0.069 bar	1 l/min: 0.035 scfm 1 scfm: 28.3 l/min	1 mm: 0.039 inch 1 inch: 25.4 mm	Pressure gauge: see end of chapter
------------------------------	-------------------------------------	---	-------------------------------------	---------------------------------------

**Order example:**  
R3100-02C