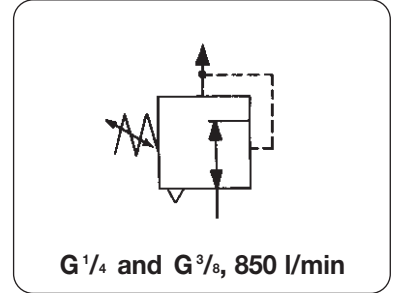


Description	Designed especially for low-pressure applications where minimal reduced pressure variation is required. The regulator has no constant bleed.		
Adjustment	T-handle or handwheel with locking nut		
Relieving	standard,	non relieving as option	
Supply pressure	max. 21 bar / 300 psi		
Gauge port	1/8" on the backside of body		
Temperature range	0 °C to 50 °C / 32 °F to 120 °F		
Materials	Body: zinc Spring cage: aluminium	Bottom plug: brass Inner valve: brass	Diaphragm: NBR (Buna N)



Dimensions			Adjust- ment by	K _v - value (m³/h)	Flow rate		Connection thread G	Pressure range bar	Order number
A	B	C			m³/h	l/min*			

Precision pressure regulator								relieving, without constant bleed	R216
108	162	32	T-handle	0.45	48	800	G 1/4	0.01 ... 0.6	R216-02E
								0.01 ... 1.6	R216-02F
								0.01 ... 3.5	R216-02H
108	162	32	handwheel for panel mounting	0.45	48	800	G 3/8	0.01 ... 0.6	R216-03E
								0.01 ... 1.6	R216-03F
								0.01 ... 3.5	R216-03H
108	162	32	handwheel for panel mounting	0.45	48	800	G 1/4	0.01 ... 0.6	R216-02EP
								0.01 ... 1.6	R216-02FP
								0.01 ... 3.5	R216-02HP
108	162	32	handwheel for panel mounting	0.45	48	800	G 3/8	0.01 ... 0.6	R216-03EP
								0.01 ... 1.6	R216-03FP
								0.01 ... 3.5	R216-03HP



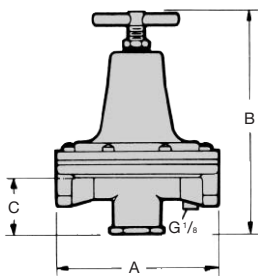
R216-02F

Special options add the appropriate letter

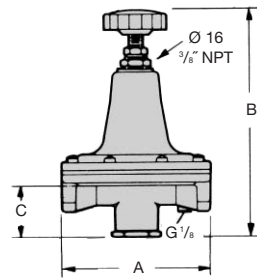
non-relieving		K	R216-0. . K
pressure gauge	Ø 63, G 1/8", loose, incl. fitting	G	R216-0. . G
for oxygen	clean	O	R216-0. . O
mount. bracket	R40-BEF	X	R216-0. . X



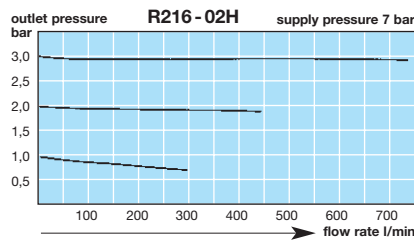
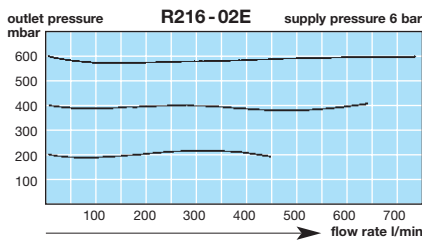
R216-02FP
for panel mounting



R216-...



R216-...P



* at 7 bar supply pressure and 1.4 bar outlet pressure

For your information:	1 bar: 14.8 psi	1 l/min: 0.035 scfm	1 mm: 0.039 inch
	1 psi: 0.069 bar	1 scfm: 28.3 l/min	1 inch: 25.4 mm

Order example:
R216-02F