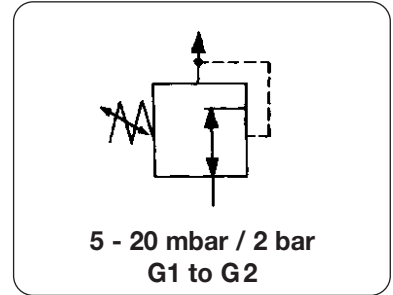


Low Pressure Regulator, PE = max. 20 bar

RZ

Description	Highly sensitive diaphragm pressure regulator, available spring-operated or pilot-operated or as volume booster.		
Media	Compressed air; neutral gases such as carbon dioxide, nitrogen and hydrogen; oxygen as option		
Pressure setting	manual, at the spring cage, on the pilot pressure regulator or as pilot-operated booster		
Static pressure SG	e.g. SG30: this means that in a static condition the outlet pressure will be 30% higher than the dynamic pressure.		
Accuracy range RG	e.g. RG10: this means that the outlet pressure has a tolerance of ± 10% depending on the flow.		
Supply pressure	e.g. 10/20 bar: this means that the pressure regulator operates at 10 bar with RG10 and at 20 bar with RG20.		
Exhaust	Can be adjusted independently of outlet pressure. On non-relieving designs the exhaust valve will be blocked.		
Mounting position	any; the pressure setting may have to be adjusted		
Pilot pressure regulator	R300-02, outlet pressure 0 to 0.14 / 0.7 / 2 / 4 / 7 bar, with constant bleed	P ₁ max. 18 bar	
Temperature range	-20 °C to 60 °C / -4 °F to 140 °F		
Materials	Body: GGG50 Spring cage: aluminium	Valve seat: brass Valve stem: SST	Diaphragm: NBR reinforced Seals: NBR



Low pressure
2

Dimensions	Static pressure	Accuracy range	Flow rate	Nominal size	Supply pressure	Connection thread	Pressure range	Order number
height Ø C	SG %	RG %	l/min*1	DN	bar**2	G	mbar	number
mm mm mm								

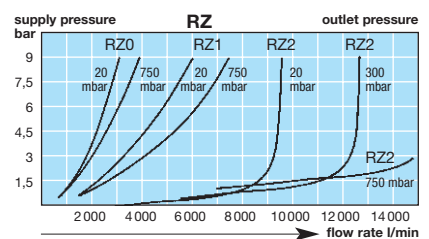
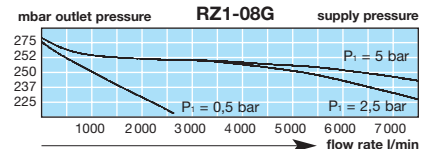
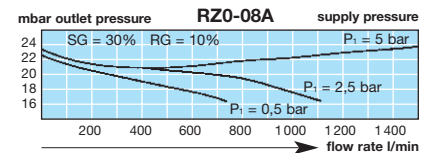
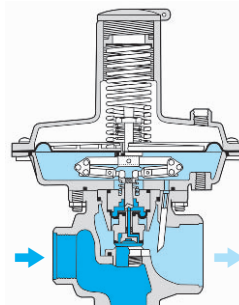
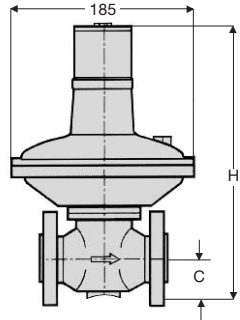
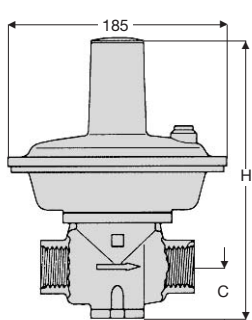
Low pressure regulator		with adjusting spring; gray cast iron 66640	supply max. 20 bar**2 adjustable relieving	NBR	RZ						
245	185	30	30 %	10 %	2100	16	10/20	G1	15- 20	RZ0-08A	
			30 %	10 %	2300					110- 180	RZ0-08F
			20 %	5 %	2900					700-1100	RZ0-08I
250	185	30	30 %	10 %	4200	19	10/20	G1 1/2*3	15- 20	RZ1-12A	
			30 %	10 %	4500					110- 180	RZ1-12F
			20 %	5 %	5700					700-1100	RZ1-12I
385	275	45	20 %	10 %	10000	34	16/19	G2	16- 22	RZ2-16A	
			10 %	5 %	12000					110- 190	RZ2-16G
			10 %	5 %	21000					880-1200	RZ2-16M



Low pressure regulator		with pilot regulator gray cast iron 66640	max. 18 bar, const. bleed adjustable relieving	NBR	RZ						
245	185	30	30 %	10 %	2200	16	10/18	G1	12- 140	RZ0-08N1	
			20 %	5 %	2700					30- 700	RZ0-08N7
			20 %	5 %	3300					30-2000	RZ0-08NA
250	185	30	30 %	10 %	4400	19	10/18	G1 1/2*3	12- 140	RZ1-12N1	
			20 %	5 %	5000					30- 700	RZ1-12N7
			20 %	5 %	7000					30-2000	RZ1-12NA
385	275	45	20 %	10 %	11000	34	16/18	G2	10- 140	RZ2-16N1	
			10 %	5 %	16000					30- 700	RZ2-16N7
			10 %	5 %	30000					30-2000	RZ2-16NA



Special options	add the appropriate letter						
pressure range RZ0 / 1	20 - 30 mbar	B	30 - 40 mbar	C	40 - 70 mbar	D	RZ. - 08D
	70 - 110 mbar	E	180 - 300 mbar	G	300 - 700 mbar	H	RZ. - 08H
pressure range RZ2	19 - 27 mbar	B	26 - 39 mbar	C	36 - 59 mbar	D	RZ2 - 16D
	55 - 80 mbar	E	74 - 120 mbar	F	180 - 300 mbar	H	RZ2 - 16H
	280 - 320 mbar	I	310 - 600 mbar	K	580 - 900 mbar	L	RZ2 - 16L
DIN flange	DN 25 x PN16					F	RZ0 - 08F
	DN 40 x PN16					F	RZ1 - 08F
	DN 50 x DN50					F	RZ2 - 16F
oxygen clean						O	RZ. - ...O
Viton	FPM elastomer					V	RZ. - ...V
non-relieving	without relieving					K	RZ. - ...K
volume booster	pilot-operated pressure regulator					J	RZ. - ...J
	pilot-operated pressure regulator					J	RZ. - ...J



*1 at 4 bar supply pressure and top outlet pressure
 **2 10 bar with 10% accuracy on RG10; 20 bar on RG20
 **3 supply connection G1

For your information:	1 bar: 14.5 psi 1 psi: 0.069 bar	1 l/min: 0.035 scfm 1 scfm: 28.3 l/min	1 mm: 0.039 inch 1 inch: 25.4 mm	Pressure gauge: Please consult chapter "Gauges"
------------------------------	-------------------------------------	-------------------------------------------	-------------------------------------	----------------------------------------------------

Order example:
RZ1-12N7