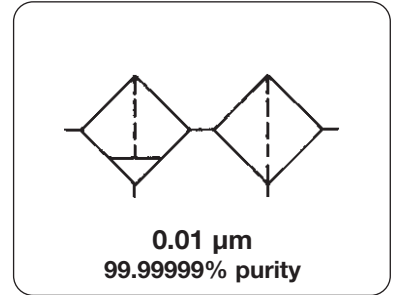


# Activated Carbon Filter Combination

G..

<b>Description</b>	Two-stage filter combination combining an oil removal and an activated carbon filter. Air filtered with this combination is virtually free from oil, moisture, odours and particles and is 1000 times purer than the air we breathe. Temperature range 1 - 40 °C / 34 °F - 104 °F
<b>Efficiency</b>	99.99999% based on 0.01µm particle size. ≤ 0.003 mg residual oil content per m <sup>3</sup> of compressed air.
<b>Filter element</b>	Stage 1: borosilicate fibre for filtering out oil, water and solid impurities. Stage 2: folded, multi-layer glass fibre with activated carbon for filtering out oil vapours and odours.
<b>Service life</b>	The activated carbon filter has a service life of 500 operating hours to maximum 1 year. The filter should be changed once the differential pressure exceeds 0.35 bar.
<b>Activated carbon filter</b>	Since the activated carbon is purely adsorbent in function, differential pressure does not arise.



Dimensions				Order number		Flow rate	Connection thread	Order number
A	B	C	D	spare filter elem.	Stage 1			

Activated carbon filter				including autodrain, 99.99999% effic.,		max. 16 bar, ≤ 0.005 mg/m <sup>3</sup> oil		0.01 µm	G.XA
120	167	153	60	1030 X	1030 A	30	500	G <sup>1</sup> / <sub>4</sub>	<b>G 2XA</b>
174	209	188	75	1050 X	1050 A	50	800	G <sup>1</sup> / <sub>4</sub>	<b>G 3XA</b>
174	209	188	90	1070 X	1070 A	70	1160	G <sup>3</sup> / <sub>8</sub>	<b>G 5XA</b>
174	279	258	160	1140 X	1140 A	100	1660	G <sup>1</sup> / <sub>2</sub>	<b>G 7XA</b>
260	315	272	135	2010 X	2010 A	180	3000	G <sup>3</sup> / <sub>4</sub>	<b>G 9XA</b>
260	415	372	235	2020 X	2020 A	300	5000	G 1	<b>G11XA</b>
260	515	472	335	2030 X	2030 A	470	7800	G 1 <sup>1</sup> / <sub>2</sub>	<b>G12XA</b>
260	715	672	525	2050 X	2050 A	700	11600	G 1 <sup>1</sup> / <sub>2</sub>	<b>G13XA</b>
340	823	775	520	3050 X	3050 A	900	15600	G 2	<b>G14XA</b>

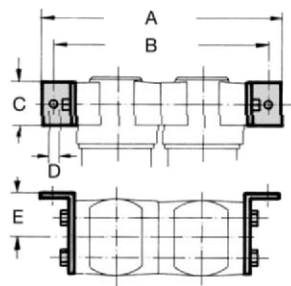
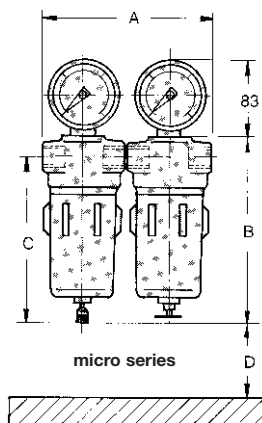
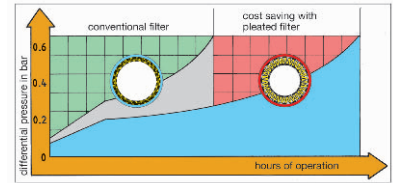


## Special options add the appropriate letter

<b>differential pressure gauge</b>	not G2	
<b>manual drain</b>		
<b>set of mounting brackets</b>	BF10 for G2	BF04 for G 3 to G 7
<b>set of mounting brackets</b>	BF05 for G9 + G11	BF06 for G12 + G13
<b>"labsfree"</b>	for painting systems	
<b>for oxygen</b>	clean	

## Accessories

<b>D</b>	G...D
<b>H</b>	G...H
<b>X</b>	G...X
<b>X</b>	G...X
<b>L</b>	G...L
<b>O</b>	G...O



mounting bracket

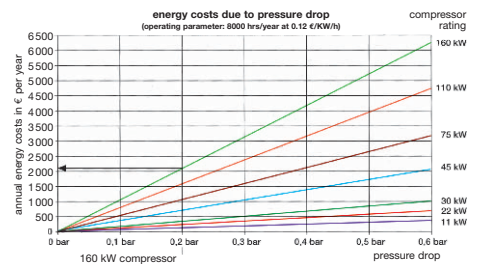
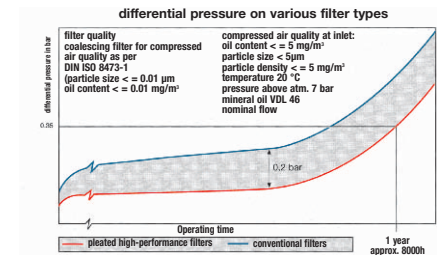
mount. bracket	A	B	C	D	E
BF 04	244	222	30	9	50
BF 05 and BF 6	360	325	65	13	70
BF 10	180	160	25	7	40

\* at 7 bar operating pressure with open outlet. Pressure drop when new: **90 mbar**.  
The maximum permissible flow rate is 10% higher than the indicated value.

## Conversion factor for other operating pressures

operating pressure bar	1	2	3	4	5	6	7	8	9	10	11	12	13	14	15	16
factor	0.25	0.38	0.5	0.65	0.75	0.88	1	1.13	1.25	1.38	1.5	1.63	1.75	1.88	2	2.13

<b>For your information:</b>	1 bar: 14.5 psi 1 psi: 0.069 bar	1 l/min: 0.035 scfm 1 scfm: 28.3 l/min	1 mm: 0.039 inch 1 inch: 25.4 mm
------------------------------	-------------------------------------	---	-------------------------------------



Filter

11



**Order example:  
G11XA**